



ensuring quality.

[dorzen.in](https://dorzen.in)

THE BOLD LOOK OF  
**dorzen**®

## About Us

Established in 2010, Dorzen has grown a far way. We strive to enrich and value-add our society with our quality products.

Throughout its years of fulfilling experience, we have delivered a range of quality products to the market. The company's focus is to offer the best quality goods and services, at a competitive price to achieve the optimum outcome at work place.

In its years of experience, Dorzen has grown into a leading hardware distributor in India, offering quality products to its wide range of customers, often exceeding their expectations. We are backed by strong support and confidence from our clients, both locally and globally.

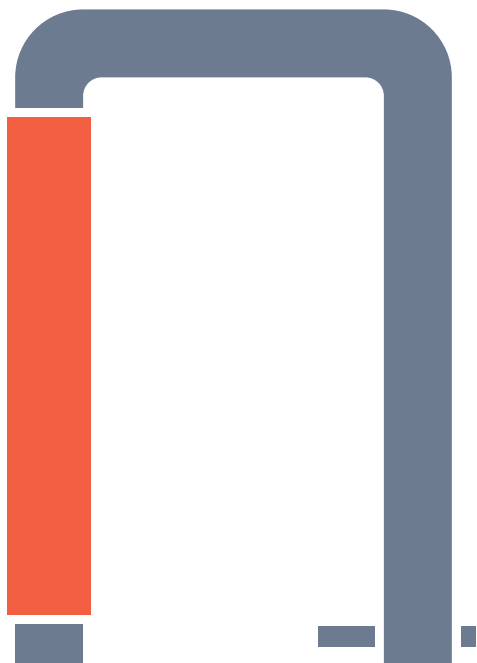
## Our future

### Vision

We are dedicated to achieving exceptional performance in all we do. We operate with a level of dedication, loyalty and positive energy that sets us apart from our competition. We respond to the needs and expectations of our customers. We encourage creativity and innovation as we constantly seek to improve our products and services and enhance the quality of life in our company.

### Mission

We are professional and honest in our working relationships. We strive for equality and fairness in our decision making and in our treatment of one another. We hold ourselves accountable to the highest ethical and performance standards.



## The Dorzen Philosophy

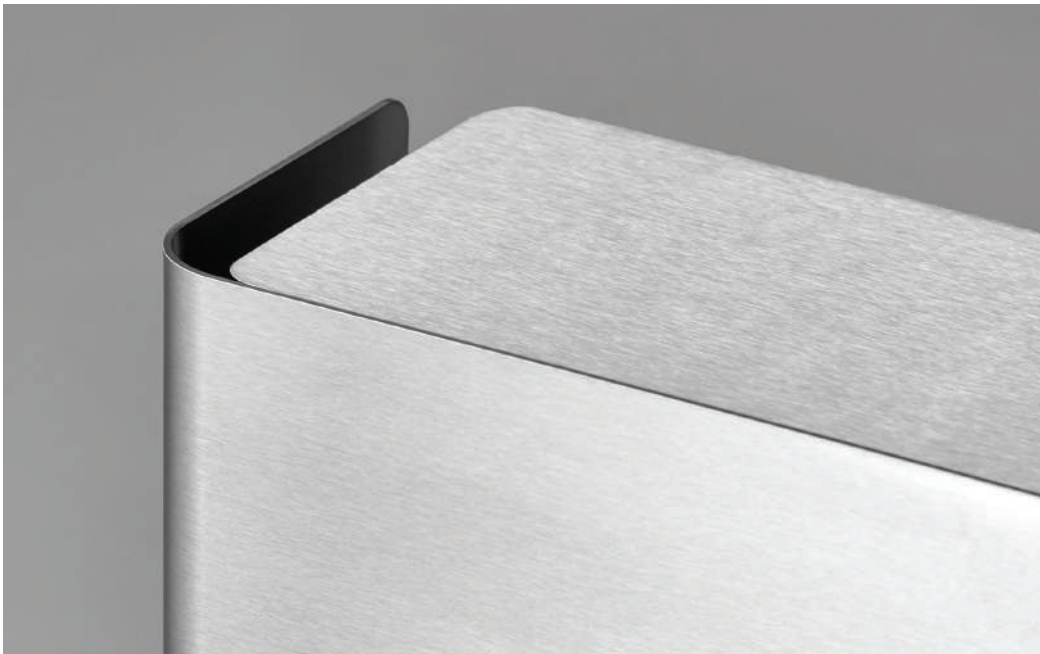
### People / Culture

We believe the long term success of our employees directly correlates to the long term success of the business. We recognize that sustainability and culture are directly linked and our employees are the source of our success.

### Teamwork / Results Driven

We get the job done! We value our culture, one of participation and building strong partnerships across our organization and organizations with which we do business. We respect individual differences recognizing they are a part of our strength as a team. We share ideas to inspire and learn from one another.

To deliver the best possible reliable hardware solutions to help our clients improve their daily day to day life and experience the change.



# Dorzen Believe In High Quality Products With Top Class Finish

Dorzen has always fulfilled global quality parameters. Dorzen architectural products are the epitome of enduring strength, stunning aesthetics, unique designs and impeccable functionality. with vast range of products and varieties.

Our international distribution and service network is there to provide competent consultation and reliable technical support throughout the world. Our expert is always available to help you.

## Contents

Floor Springs	05
Glass Door Package	07
Patch Fittings	09
Door Closers	15
Glass Connectors	18
Shower Hinges	21
Glass Door Locks	25
Spider Fittings	28
Routel Fittings	32
Fin Plates & Splice Plates	35
Canopy Fittings	37
Point Fixed Glass Fittings	40
Shower Header Accessories	43
PVC Seals	47
Glass Sliding System Set	50
Sliding Tracks & Sliding Accessories	55
Sliding Glass Door Handle	60
Mortise Lock Body	63
Euro Profile Cylinder	65
Mortise Handle	67
Glass Door Handle	71
Sliding Folding Glass Door System	77
Center Sliding Folding Glass Door System	84
Hand Rail Glass Fitting Accessories	87
Variety of Materials	96
General Information	97
Global Presence	99



# Floor Springs

A Floor Spring is a mechanical door closing device mostly used for glass doors along with patch fitting. Floor springs are mostly used where both pull and push movement are required. The most prominent area where floor springs are used is in the Interior doors of a Business park, Malls, Hospital building.





## D-FS01

### Single Cylinder Floor Spring

Maximum Width of Door	- 800mm
Maximum Weight of Door	- 80Kg
Maximum Open Angle	- 120°
Hold Open	- 90°
Closing Speed	- 120°
Final Closing Speed	- 15° - 0°
Tested to	- 5,00,000 Cycles

#### Applicability

Wooden, Glass & Aluminium Door Etc.



## D-FS02

### Double Cylinder Floor Spring

Maximum Width of Door	- 1100mm
Maximum Weight of Door	- 120Kg
Maximum Open Angle	- 120°
Hold Open	- 90°
Closing Speed	- 120°
Final Closing Speed	- 15° - 0°
Tested to	- 5,00,000 Cycles

#### Applicability

Wooden, Glass & Aluminium Door Etc.



## D-FS03

### Double Cylinder Floor Spring

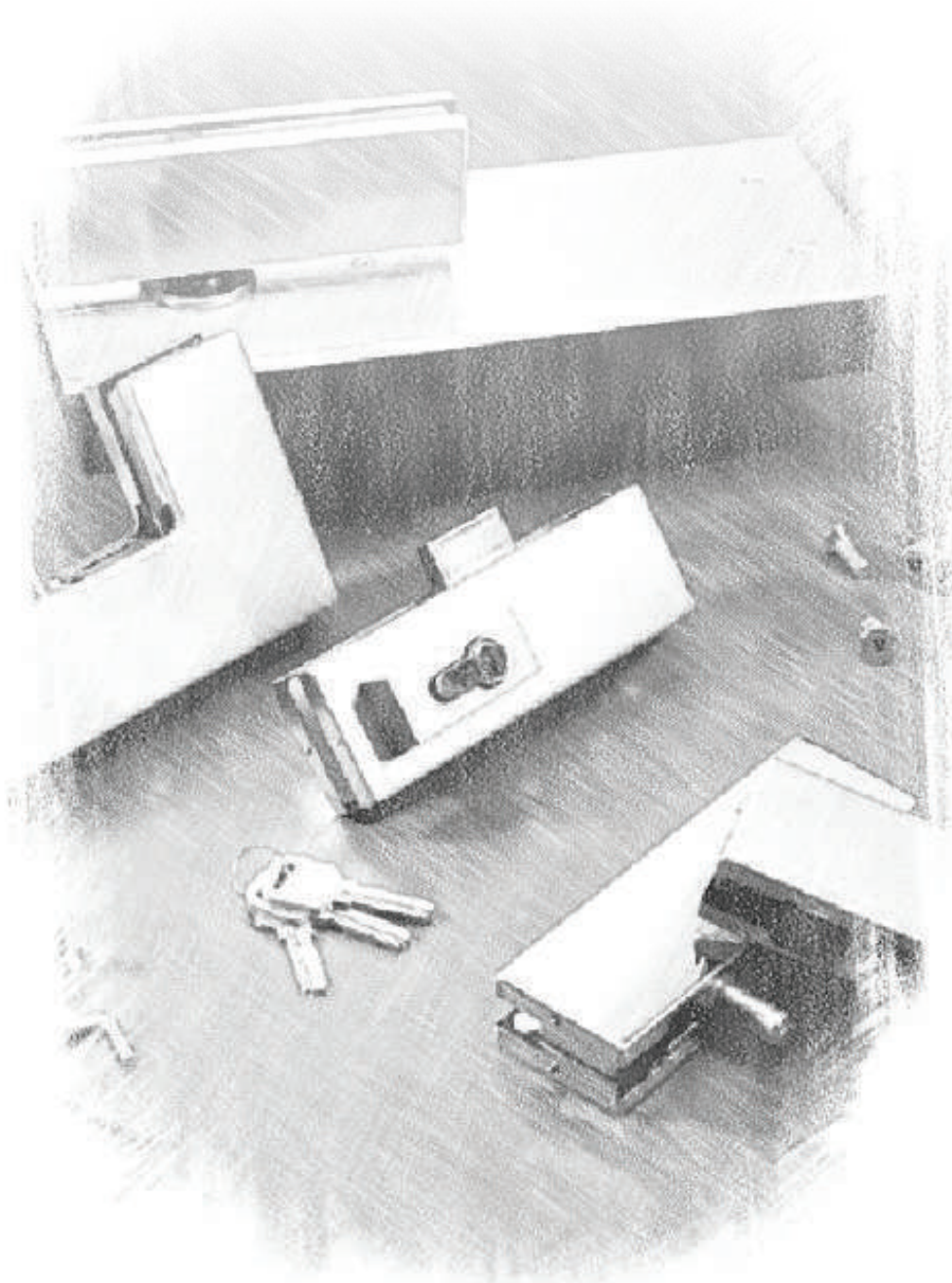
Maximum Width of Door	- 1300mm
Maximum Weight of Door	- 150Kg
Maximum Open Angle	- 120°
Hold Open	- 90°
Closing Speed	- 120°
Final Closing Speed	- 15° - 0°
Tested to	- 5,00,000 Cycles

#### Applicability

Wooden, Glass & Aluminium Door Etc.

# Glass Door Package

Dorzen offers products and solutions for Commercial Glass Doors, Movable Glass Partitions, Shower Cubicles and Glass Facades. These fittings come in modern designs, superior finish & are tested as per international quality standards for their safety and functionality.





## D-GDP01

### Glass Door Package

Floor Spring	- 1 Nos.
Top Patch	- 1 Nos.
Bottom Patch	- 1 Nos.
Top Pivot	- 1 Nos.



## D-GDP02

### Glass Door Package

Floor Spring	- 1 Nos.
Top Patch	- 1 Nos.
Bottom Patch	- 1 Nos.
Top Pivot	- 1 Nos.
Bottom Patch Lock	- 1 Nos.



## D-GDP03

### Glass Door Package

Floor Spring	- 1 Nos.
Wooden Accessories	- 1 Nos.



## D-GDP04

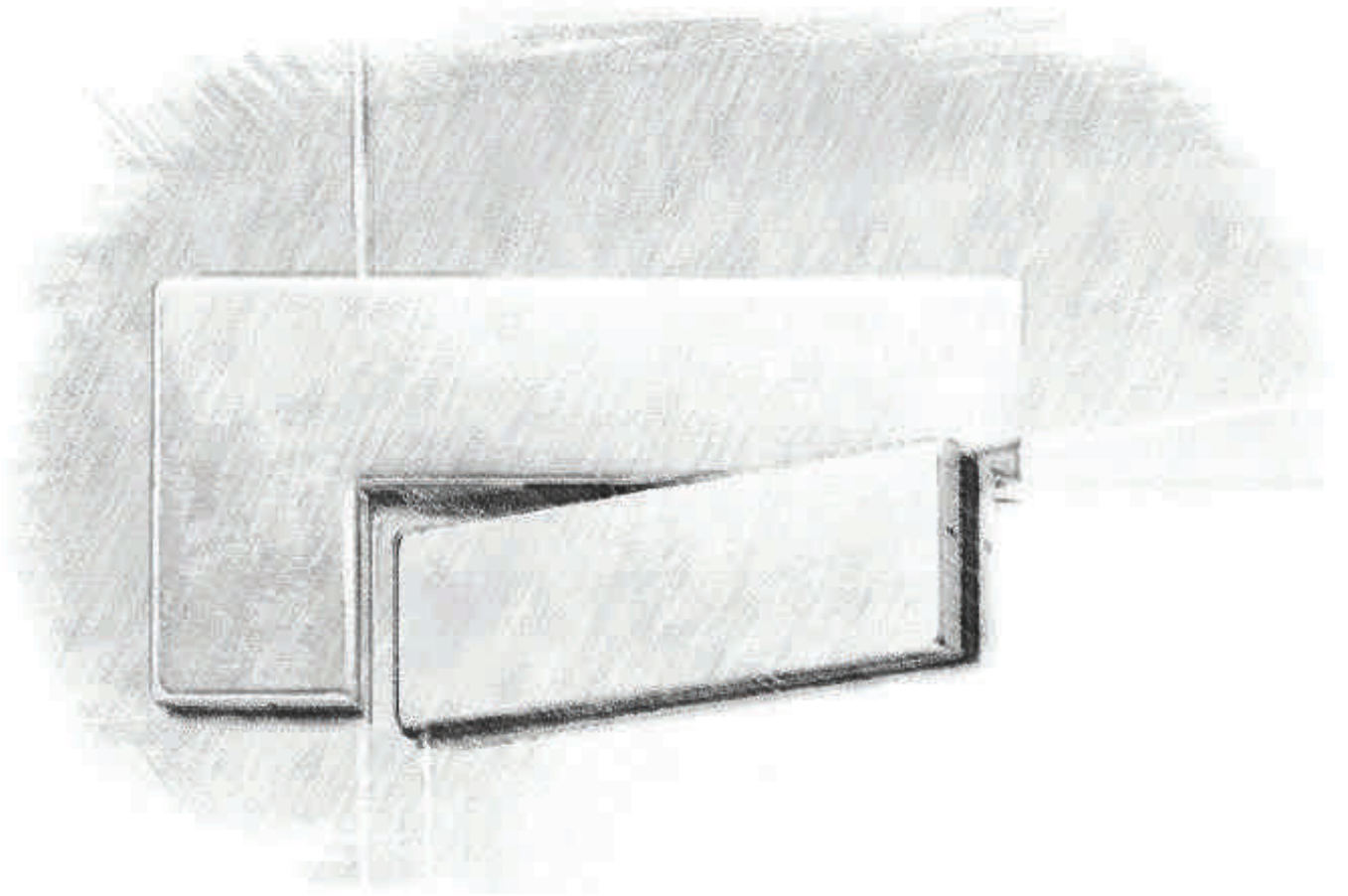
### Glass Door Package

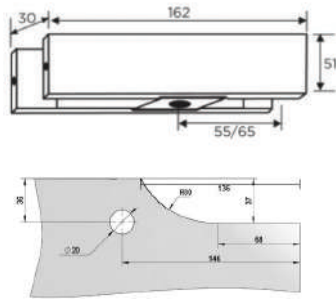
Floor Spring	- 1 Nos.
Top Patch	- 1 Nos.
Bottom Patch	- 1 Nos.
Top Pivot	- 1 Nos.
Bottom Patch Lock	- 1 Nos.
H - Handle (32x300 mm)	- 1 Nos.



# Patch Fittings

Patch fittings are a frameless glass concept, which evolved as a modern interior and exterior design option for commercial and residential projects. They can be frameless fixed glass, over panel glass, or frameless glass doors.

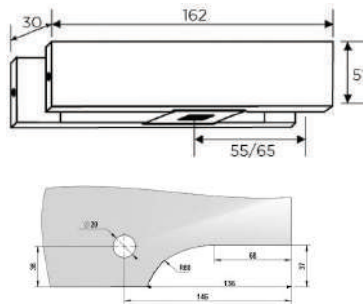




## D-PF01

Top Patch

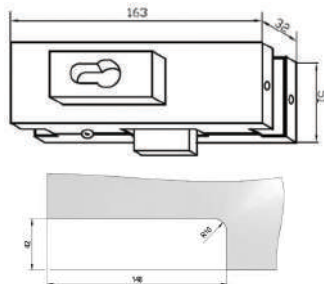
Fit for glass thickness: 10mm-12mm  
Material: Aluminium Alloy,  
Stainless Steel 304 Cover Plate  
Finish: SSS



## D-PF02

Bottom Patch

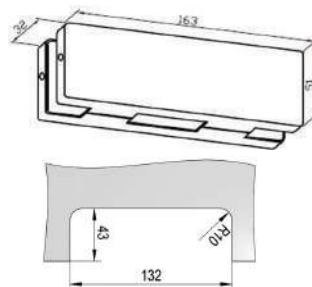
Fit for glass thickness: 10mm-12mm  
Material: Aluminium Alloy,  
Stainless Steel 304 Cover Plate  
Finish: SSS



## D-PF03

Bottom Patch Lock

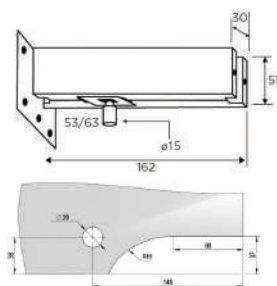
Fit for glass thickness: 10mm-12mm  
Material: Aluminium Alloy,  
Stainless Steel 304 Cover Plate  
Finish: SSS



## D-PF04

Strike Box

Fit for glass thickness: 10mm-12mm  
Material: Aluminium Alloy,  
Stainless Steel 304 Cover Plate  
Finish: SSS



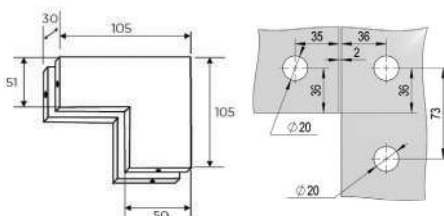
## D-PF05

Overpanel Patch with Pivot

Fit for glass thickness: 10mm-12mm

Material: Aluminium Alloy,  
Stainless Steel 304 Cover Plate

Finish: SSS



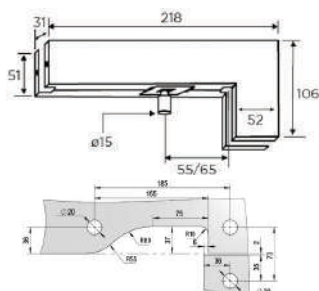
## D-PF06

Corner Patch (Small 'L')

Fit for glass thickness: 10mm-12mm

Material: Aluminium Alloy,  
Stainless Steel 304 Cover Plate

Finish: SSS



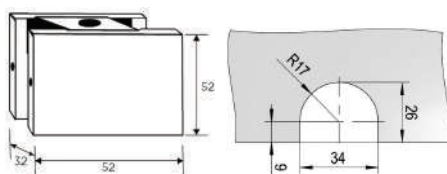
## D-PF07

Corner Patch (Big 'L')

Fit for glass thickness: 10mm-12mm

Material: Aluminium Alloy,  
Stainless Steel 304 Cover Plate

Finish: SSS



## D-PF08

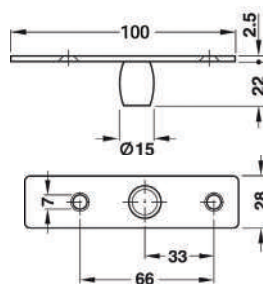
Wall to Glass Connecting Patch

Fit for glass thickness: 10mm-12mm

Material: Aluminium Alloy,  
Stainless Steel 304 Cover Plate

Finish: SSS

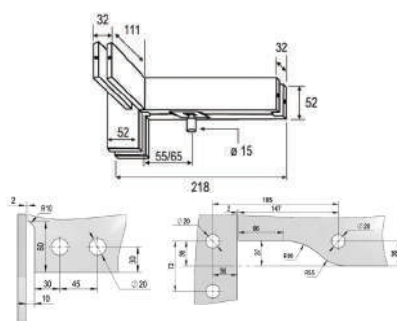




## D-PF09

Top Pivot

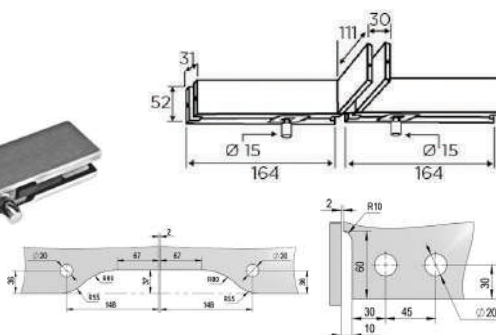
Material: Aluminium Alloy,  
Stainless Steel 304 Cover Plate  
Finish: SSS



## D-PF10

Overpanel Side Panel  
Patch Connector With Fin

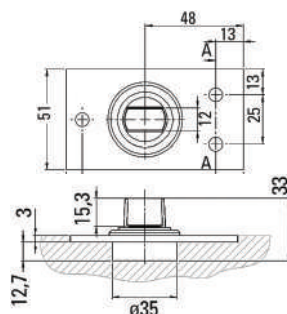
Fit for glass thickness: 10mm-12mm  
Material: Aluminium Alloy,  
Stainless Steel 304 Cover Plate  
Finish: SSS



## D-PF11

Double Patch with Fin

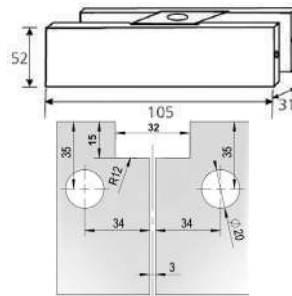
Fit for glass thickness: 10mm-12mm  
Material: Aluminium Alloy,  
Stainless Steel 304 Cover Plate  
Finish: SSS



## D-PF12

Bottom Bearing Patch Pivot

Fit for glass thickness: 10mm-12mm  
Material: Aluminium Alloy,  
Stainless Steel 304 Cover Plate  
Finish: SSS



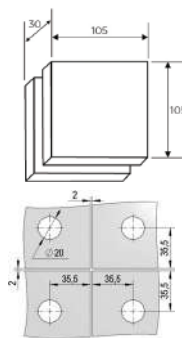
## D-PF13

Two Glass Patch Connector

Fit for glass thickness: 10mm-12mm

Material: Aluminium Alloy,  
Stainless Steel 304 Cover Plate

Finish: SSS



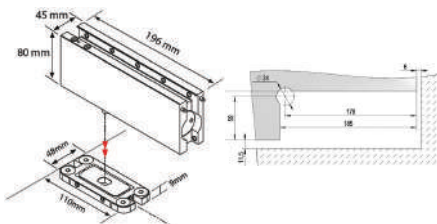
## D-PF14

Quadraple Patch Connector

Fit for glass thickness: 10mm-12mm

Material: Aluminium Alloy,  
Stainless Steel 304 Cover Plate

Finish: SSS



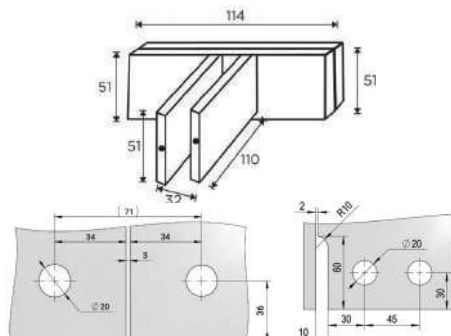
## D-PF15

Hydraulic Patch

Fit for glass thickness: 10mm-12mm

Material: Aluminium Alloy,  
Stainless Steel 304 Cover Plate

Finish: SSS



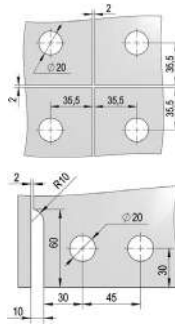
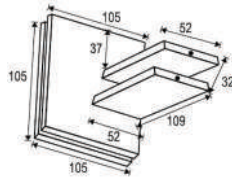
## D-PF16

Double Glass Connector with Fin

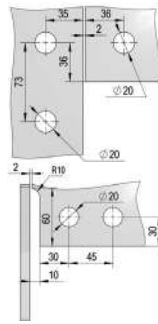
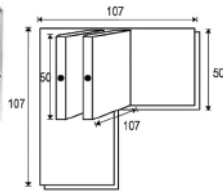
Fit for glass thickness: 10mm-12mm

Material: Aluminium Alloy,  
Stainless Steel 304 Cover Plate

Finish: SSS



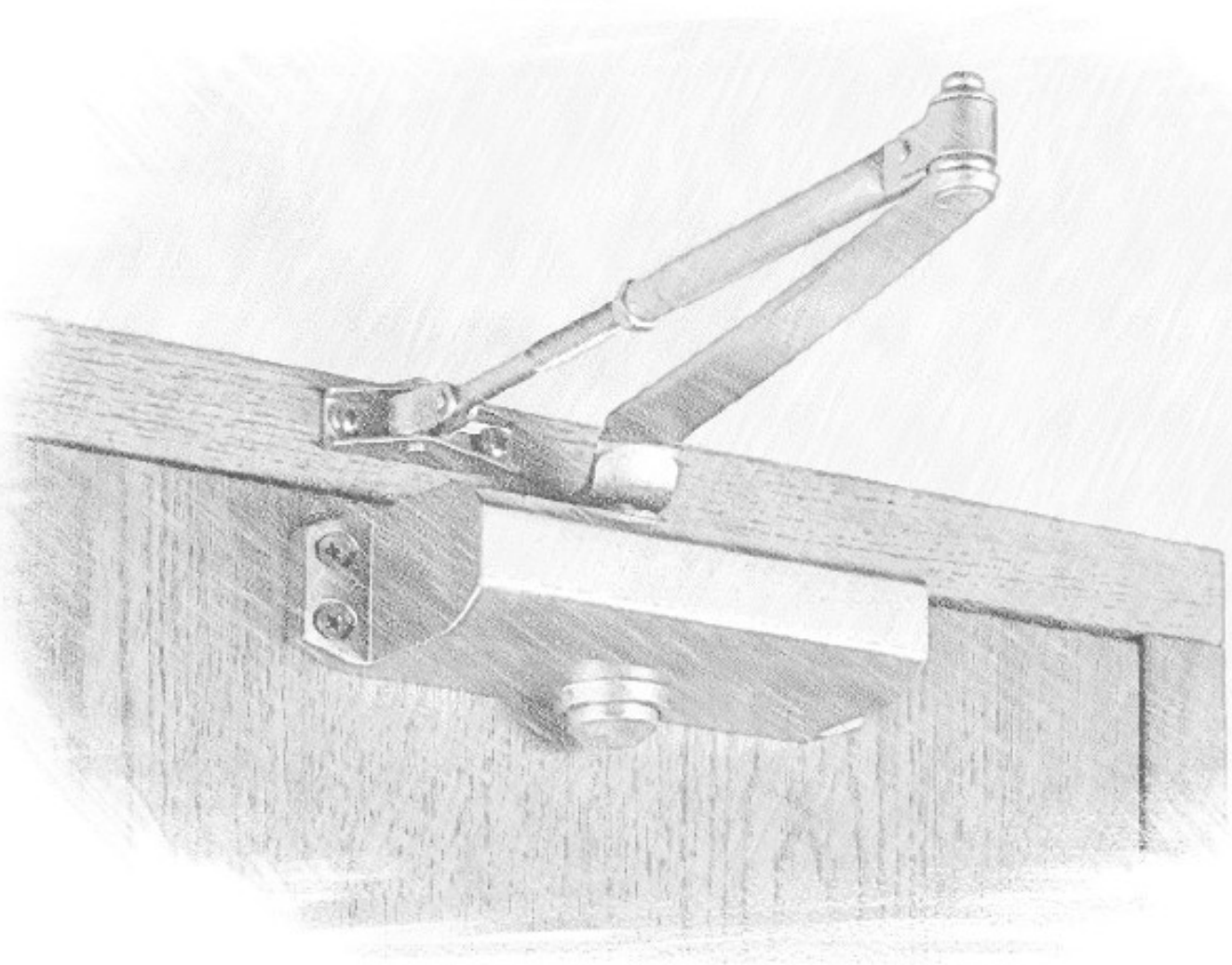
**Fit for glass thickness:** 10mm-12mm  
**Material:** Aluminium Alloy,  
 Stainless Steel 304 Cover Plate  
**Finish:** SSS

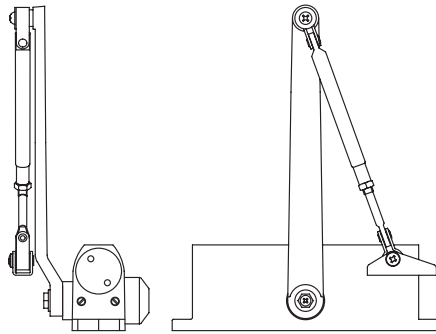


Fit for glass thickness: 10mm-12mm  
Material: Aluminium Alloy,  
Stainless Steel 304 Cover Plate  
Finish: SSS

# Door Closers

A door closer is a hydraulic device that is used to automatically close a door after it has been opened. Door closers are commonly used as a fire prevention measure, typically installed on fire doors, as well as helping to prevent draughts.





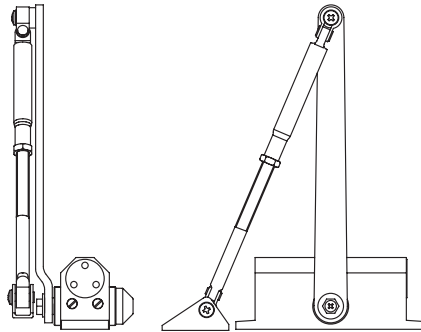
## D-DC01

### Overhead Door Closer

Economy Model  
Heavy Duty Rack and Pinion  
Precision Aluminium Extrusion Body  
Two Saperate Valves adjustable Closing  
and Latching Speed

**Weight Capacity**  
50-60Kg

**Width of Door**  
750mm



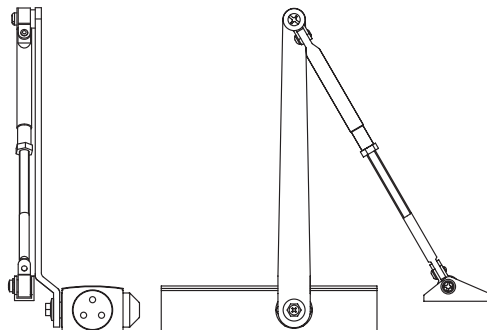
## D-DC02

### Overhead Door Closer

Regular Model  
Heavy Duty Rack and Pinion  
Precision Aluminium Extrusion Body  
Two Saperate Valves adjustable Closing  
and Latching Speed

**Weight Capacity**  
60-80Kg

**Width of Door**  
850mm



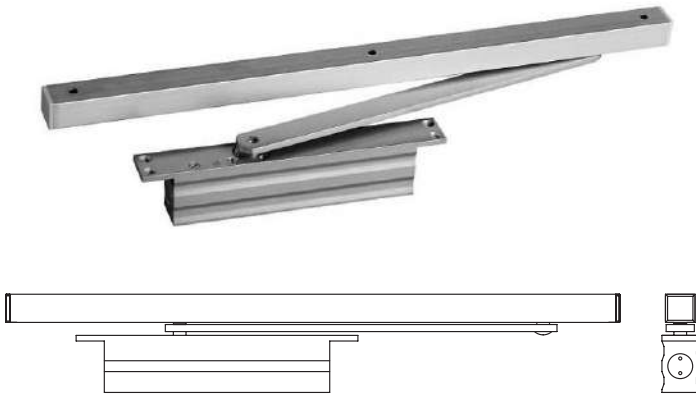
## D-DC03

### Overhead Door Closer

Universal Model  
Heavy Duty Rack and Pinion  
Precision Aluminium Extrusion Body  
Two Saperate Valves adjustable Closing  
and Latching Speed

**Weight Capacity**  
80-100Kg

**Width of Door**  
950mm



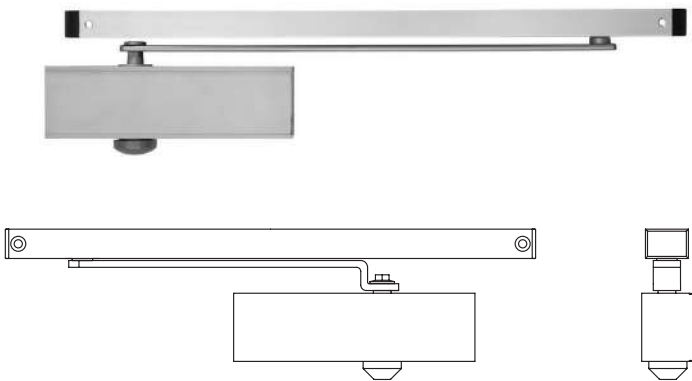
## D-DC04

### Concealed Door Closer

Concealed Door Closer  
Closer Body 32mm Thickness  
Slide Tracking Arm with Hold Open Function  
Heavy Duty Rack and Pinion  
Precision Aluminium Extrusion Body  
Two Saperate Valves adjustable Closing  
and Latching Speed

**Weight Capacity**  
60-80Kg

**Width of Door**  
850mm



## D-DC05

### Palmet Arm Door Closer

Slide Tracking Arm with Hold Open Function  
Heavy Duty Rack and Pinion  
Precision Aluminium Extrusion Body  
Two Saperate Valves adjustable Closing  
and Latching Speed

**Weight Capacity**  
80-100Kg

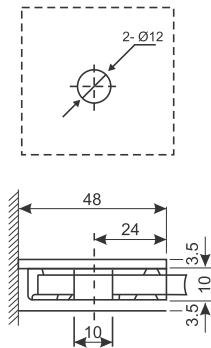
**Width of Door**  
950mm

# Glass Connectors

The glass connectors are elegant in design and give transparency which provides a brilliant look in the overall architecture.







## D-GC01

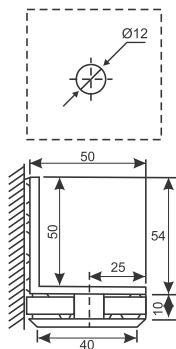
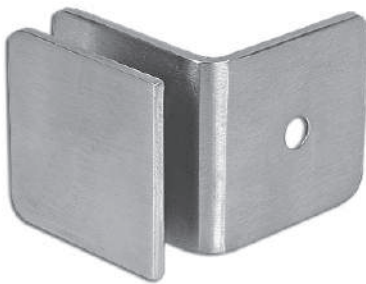
Fix Clip Connector

**Fit for glass thickness:** 8mm-12mm

**Material:** SS 304, SS 202, Brass

**Finish:** SSS, PSS, CP

**Thickness:** 3mm (SS 304)  
2.5mm (SS 202)  
5 mm (Brass)



## D-GC02

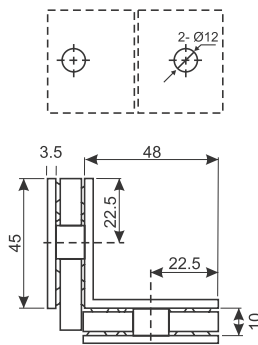
Wall to Glass 90° Connector

**Fit for glass thickness:** 8mm-12mm

**Material:** SS 304, SS 202, Brass

**Finish:** SSS, PSS, CP

**Thickness:** 3mm (SS 304)  
2.5mm (SS 202)  
5 mm (Brass)



## D-GC03

Glass to Glass 90° Connector

**Fit for glass thickness:** 8mm-12mm

**Material:** SS 304, SS 202, Brass

**Finish:** SSS, PSS, CP

**Thickness:** 3mm (SS 304)  
2.5mm (SS 202)  
5 mm (Brass)

## D-GC04

Glass to Glass 135° Connector

Fit for glass thickness: 8mm-12mm

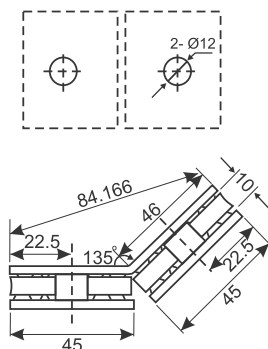
Material: SS 304, SS 202, Brass

Finish: SSS, PSS, CP

Thickness: 3mm (SS 304)

2.5mm (SS 202)

5 mm (Brass)



## D-GC05

Glass to Glass 180° Connector

Fit for glass thickness: 8mm-12mm

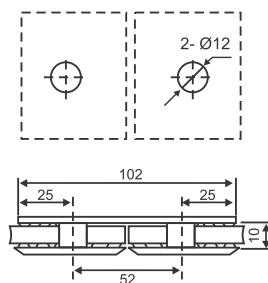
Material: SS 304, SS 202, Brass

Finish: SSS, PSS, CP

Thickness: 3mm (SS 304)

2.5mm (SS 202)

5 mm (Brass)



## D-GC06

Wall to Glass 180° Connector

Fit for glass thickness: 8mm-12mm

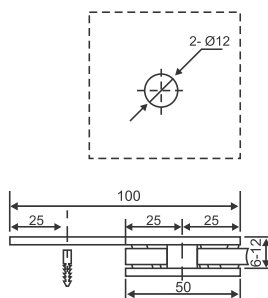
Material: SS 304, SS 202, Brass

Finish: SSS, PSS, CP

Thickness: 3mm (SS 304)

2.5mm (SS 202)

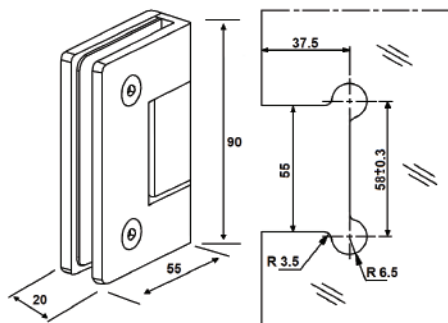
5 mm (Brass)



# Shower Hinges

A shower hinge due to that door opens by swinging in one direction on pivoting hinges, like a typical passage door in your home. The door hinge can be attached to a stationary glass panel or the wall.

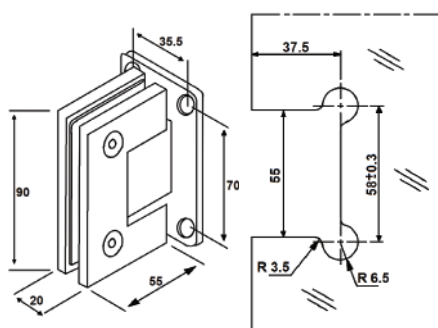




## D-SH01

### Fix Clip Hinge

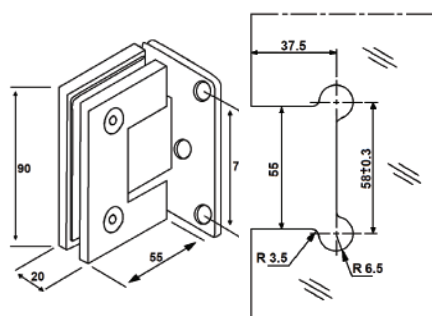
Fit for glass thickness: 8mm-12mm  
 Material: SS 304, Brass  
 Finish: SSS, PSS, CP  
 Maximum Door Width: 800mm  
 Maximum Door Weight: 45Kg  
 Hold Open at: 90°



## D-SH02

### Wall to Glass Hinge

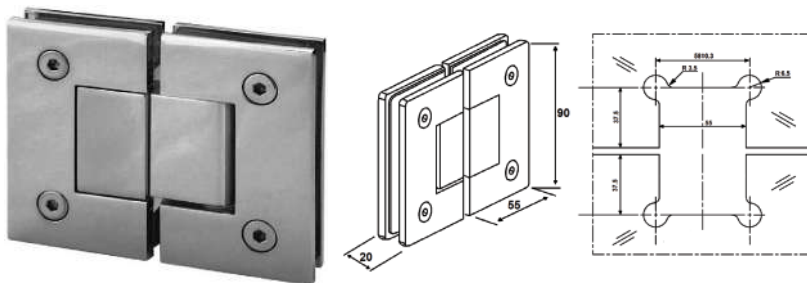
Fit for glass thickness: 8mm-12mm  
 Material: SS 304, Brass  
 Finish: SSS, PSS, CP  
 Maximum Door Width: 800mm  
 Maximum Door Weight: 45Kg  
 Hold Open at: 90°



## D-SH03

### Wall to Glass Offset Hinge

Fit for glass thickness: 8mm-12mm  
 Material: SS 304, Brass  
 Finish: SSS, PSS, CP  
 Maximum Door Width: 800mm  
 Maximum Door Weight: 45Kg  
 Hold Open at: 90°



## D-SH04

180° Glass to Glass Hinge

Fit for glass thickness: 8mm-12mm

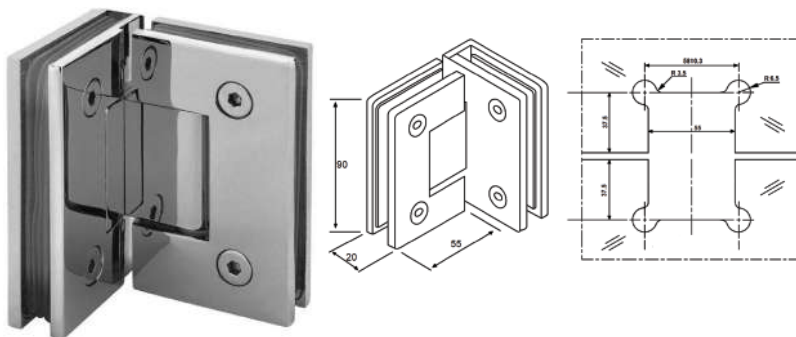
Material: SS 304, Brass

Finish: SSS, PSS, CP

Maximum Door Width: 800mm

Maximum Door Weight: 45Kg

Hold Open at: 90°



## D-SH05

90° Glass to Glass Hinge

Fit for glass thickness: 8mm-12mm

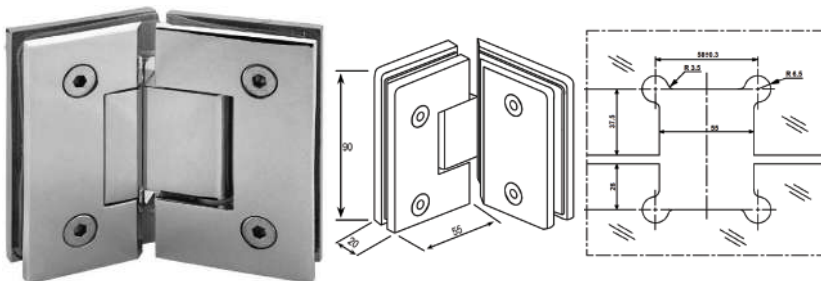
Material: SS 304, Brass

Finish: SSS, PSS, CP

Maximum Door Width: 800mm

Maximum Door Weight: 45Kg

Hold Open at: 90°



## D-SH06

135° Glass to Glass Hinge

Fit for glass thickness: 8mm-12mm

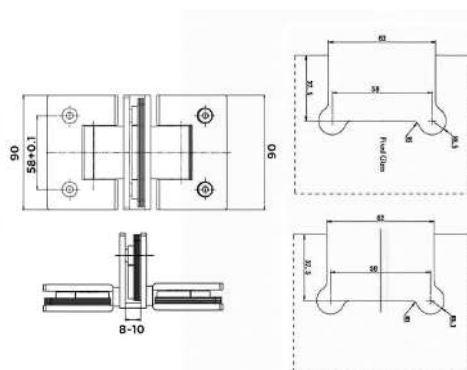
Material: SS 304, Brass

Finish: SSS, PSS, CP

Maximum Door Width: 800mm

Maximum Door Weight: 45Kg

Hold Open at: 90°



## D-SH07

### Three Way Shower Hinge

Fit for glass thickness: 8mm-12mm

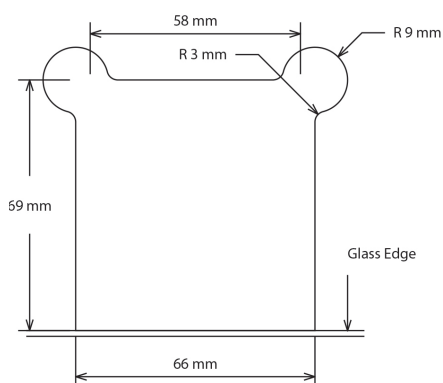
Material: SS 304, Brass

Finish: SSS, PSS, CP

Maximum Door Width: 800mm

Maximum Door Weight: 45Kg

Hold Open at: 90°



## D-SH08

### Wall to Glass Hydraulic Hinge

Fit for glass thickness: 8mm-12mm

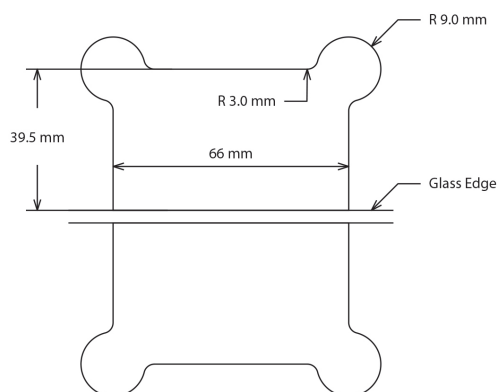
Material: SS 304

Finish: SSS, PSS, CP

Maximum Door Width: 800mm

Maximum Door Weight: 45Kg

Hold Open at: 90°



## D-SH09

### Glass to Glass Hydraulic Hinge

Fit for glass thickness: 8mm-12mm

Material: SS 304

Finish: SSS, PSS, CP

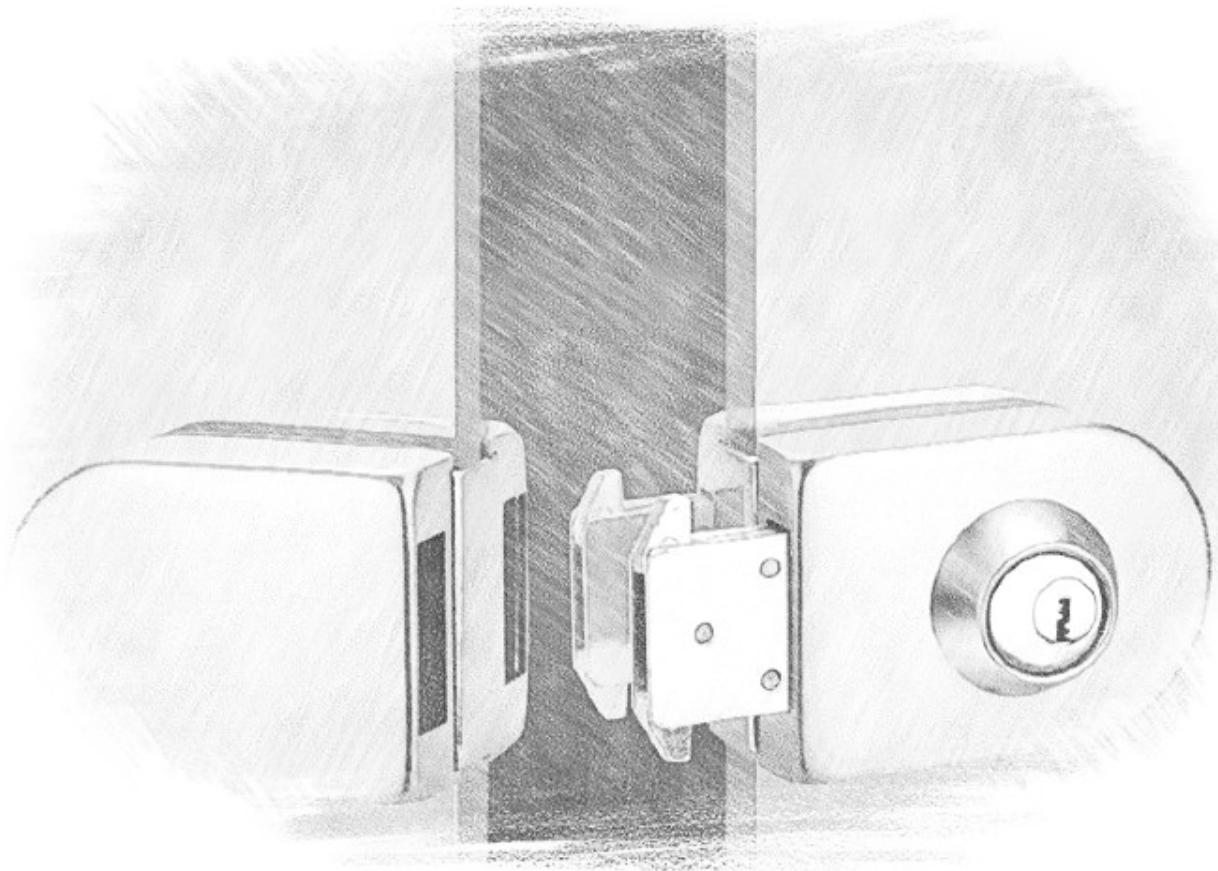
Maximum Door Width: 800mm

Maximum Door Weight: 45Kg

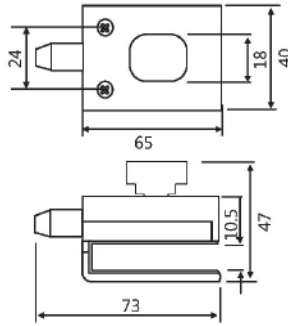
Hold Open at: 90°

# Glass Door Locks

Glass Door locks are essential. They provide safety and security like no other appliance or tool. They act as the barrier to keep your facility and workspace safe and help maintain privacy. Efficacy is fundamental when seeking out locks for your facility.







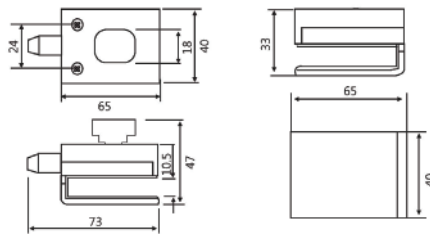
## D-GDL01

Turn Knob Lock

Fit for glass thickness: 8mm-12mm

Material: White Metal (Zinc Alloy)

Finish: Chrome Plated without Cutout



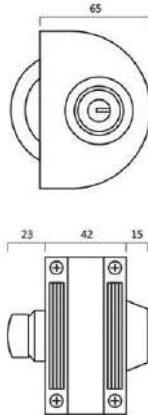
## D-GDL02

Turn Knob Lock with Strike Box

Fit for glass thickness: 8mm-12mm

Material: White Metal (Zinc Alloy)

Finish: Chrome Plated without Cutout



## D-GDL03

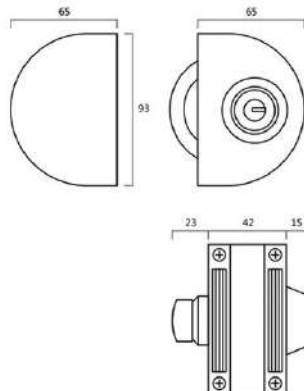
Glass Door Lock

Fit for glass thickness: 10mm-12mm

Material: SS 304

Finish: SSS

Wall to Glass without Cutout



## D-GDL04

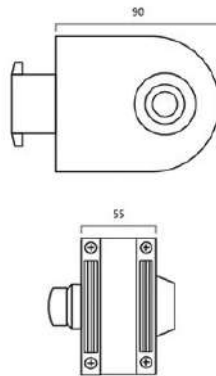
Glass Door Lock

Fit for glass thickness: 10mm-12mm

Material: SS 304

Finish: SSS

Glass to Glass without Cutout



## D-GDL05

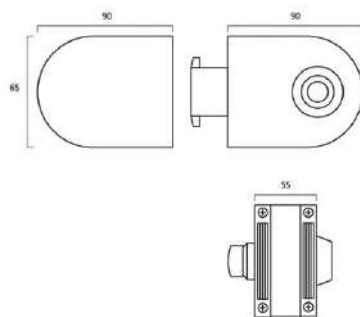
Glass Door Lock

Fit for glass thickness: 10mm-12mm

Material: SS 304

Finish: SSS

Wall to Glass without Cutout



## D-GDL06

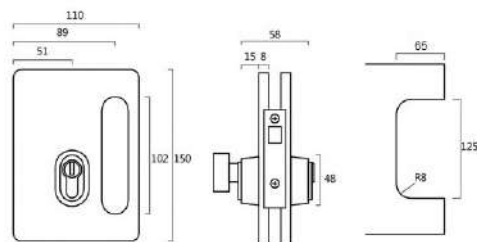
Glass Door Lock

Fit for glass thickness: 10mm-12mm

Material: SS 304

Finish: SSS

Glass to Glass without Cutout



## D-GDL07

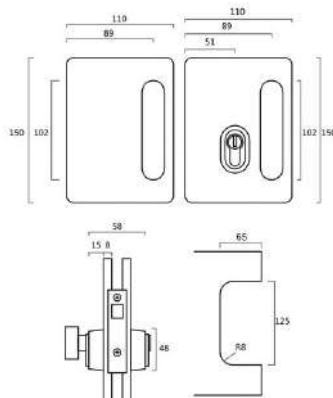
Glass Sliding Door Lock with Handle

Fit for glass thickness: 10mm-12mm

Material: SS 304

Finish: SSS

Wall to Glass



## D-GDL08

Glass Sliding Door Lock with Handle

Fit for glass thickness: 10mm-12mm

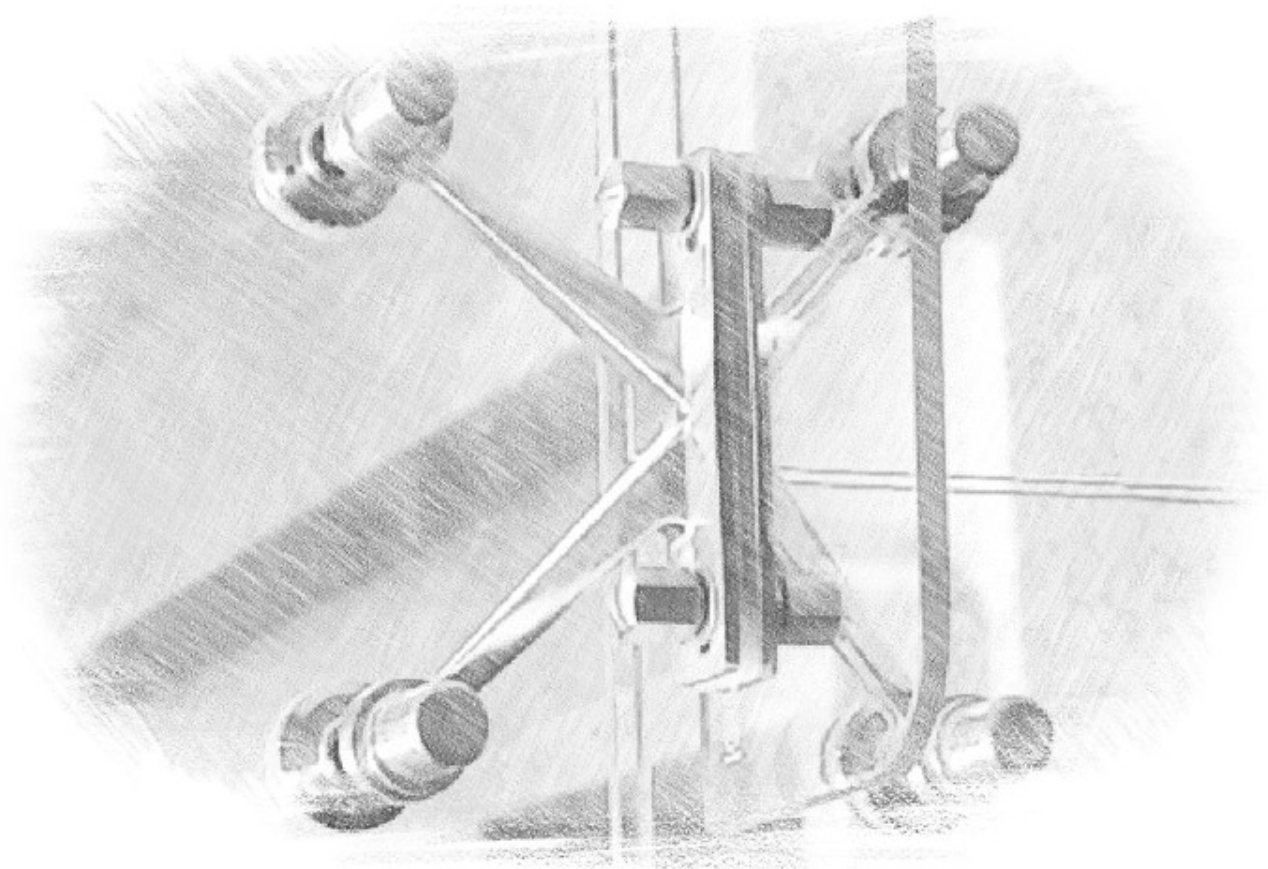
Material: SS 304

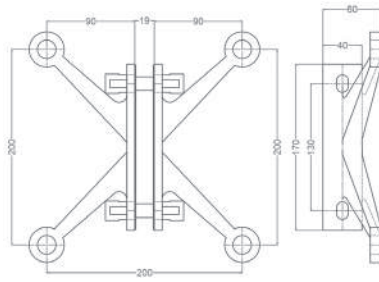
Finish: SSS

Glass to Glass

# Spider Fittings

Glass spider fitting is an important link component in glass curtain building, which transfers the load to steel structure or other main structures through glass spider joint, its mechanical property plays an important role.





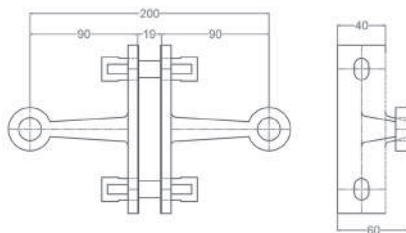
## D-SF01

4 Way Spider with Fin

**Material:** SS 304, SS 316

**Finish:** SSS, PSS

with Gasket and Teflon Washers to Prevent Glass from Damage



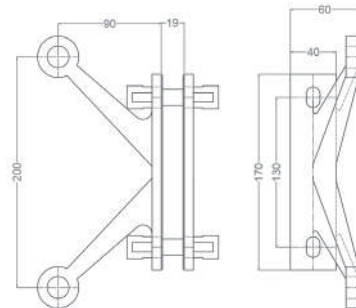
## D-SF02

2 Way Spider with Fin

**Material:** SS 304, SS 316

**Finish:** SSS, PSS

with Gasket and Teflon Washers to Prevent Glass from Damage



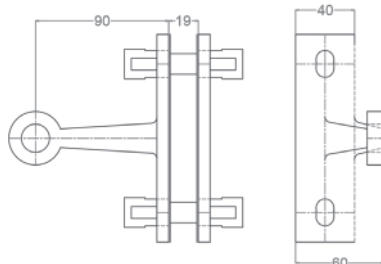
## D-SF03

2 Way 90° Spider with Fin

**Material:** SS 304, SS 316

**Finish:** SSS, PSS

with Gasket and Teflon Washers to Prevent Glass from Damage



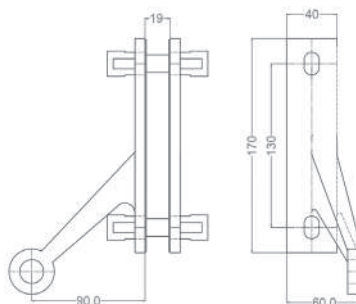
## D-SF04

1 Way 90° Spider with Fin

**Material:** SS 304, SS 316

**Finish:** SSS, PSS

with Gasket and Teflon Washers to Prevent Glass from Damage



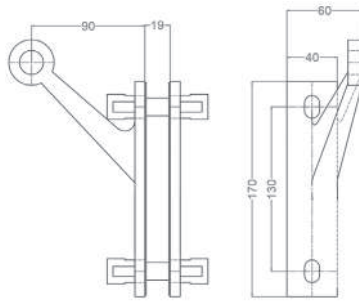
## D-SF05

1 Way 45° Left Side Spider with Fin

**Material:** SS 304, SS 316

**Finish:** SSS, PSS

with Gasket and Teflon Washers to Prevent Glass from Damage



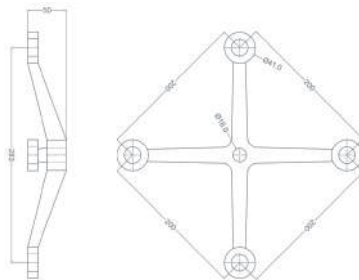
## D-SF06

1 Way 45° Right Side Spider with Fin

**Material:** SS 304, SS 316

**Finish:** SSS, PSS

with Gasket and Teflon Washers to Prevent Glass from Damage

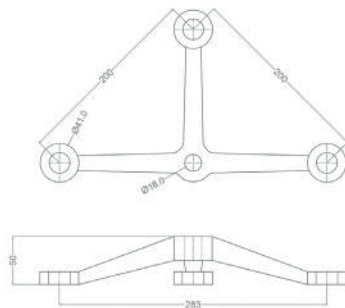


## D-SF07

4 Way Spider without Fin

**Material:** SS 304, SS 316

**Finish:** SSS, PSS

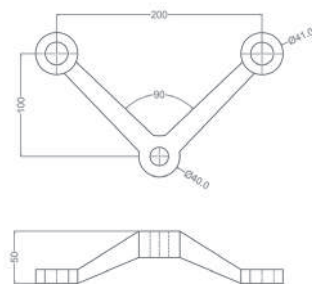


## D-SF08

3 Way Spider without Fin

**Material:** SS 304, SS 316

**Finish:** SSS, PSS

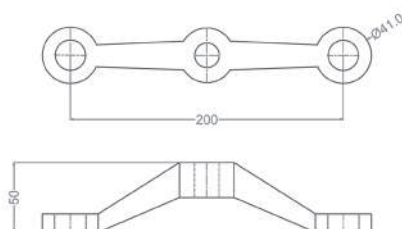


## D-SF09

2 Way 90° Spider without Fin

**Material:** SS 304, SS 316

**Finish:** SSS, PSS

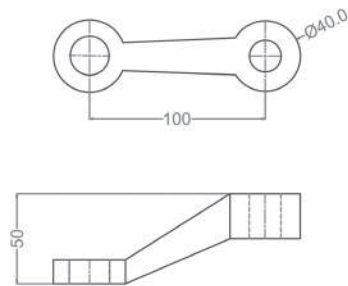


## D-SF10

2 Way 180° Spider without Fin

**Material:** SS 304, SS 316

**Finish:** SSS, PSS

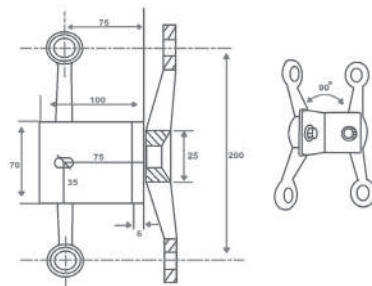


## D-SF11

1 Way Spider without Fin

Material: SS 304, SS 316

Finish: SSS, PSS

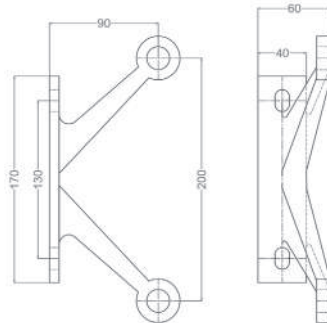


## D-SF12

4 Way 90° Spider without Fin

Material: SS 304, SS 316

Finish: SSS, PSS

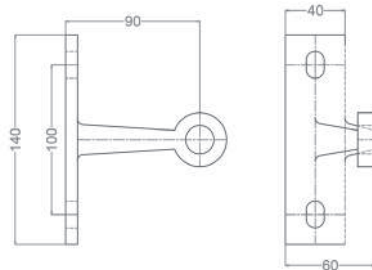


## D-SF13

2 Way 90° Wall to Glass Spider

Material: SS 304, SS 316

Finish: SSS, PSS



## D-SF14

1 Way 90° Wall to Glass Spider

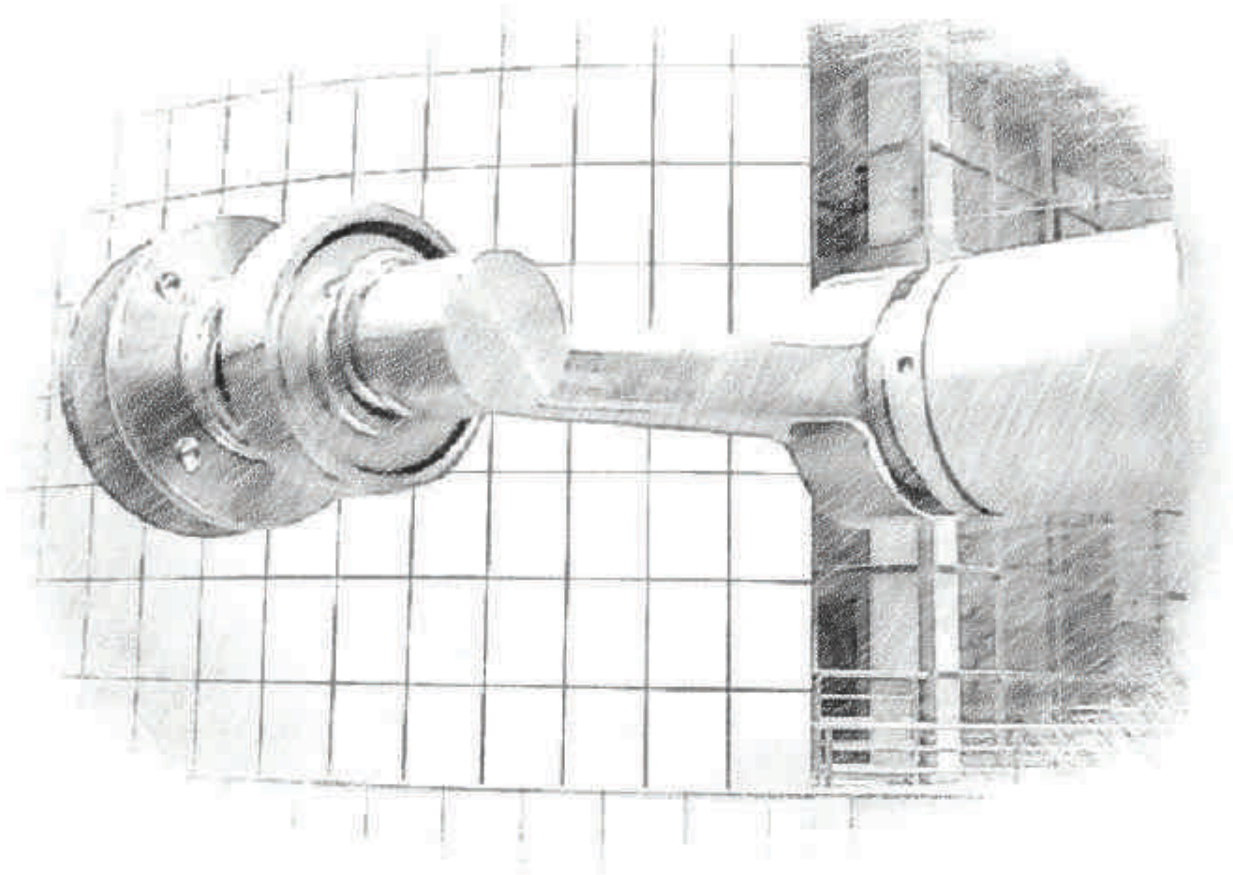
Material: SS 304, SS 316

Finish: SSS, PSS

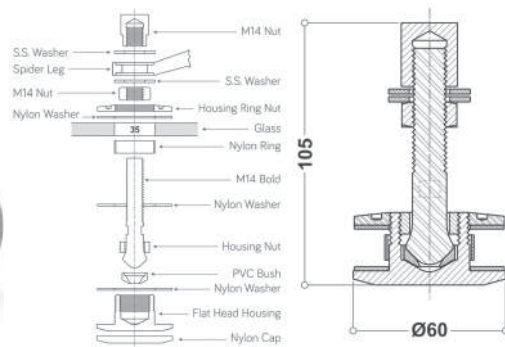


# Routel Fittings

Dorzen offers Routel Fittings to install spider fitting. Being visually attractive, they are also used to create quality building skins with the use of routel with spider fittings.







## D-RF01

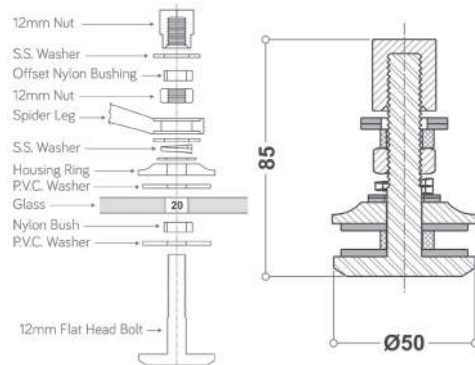
Articulated Routel

Size: 60mm

Material: SS 304, SS 316

Finish: SSS, PSS

With Teflon Washers to Prevent Glass from Damage



## D-RF02

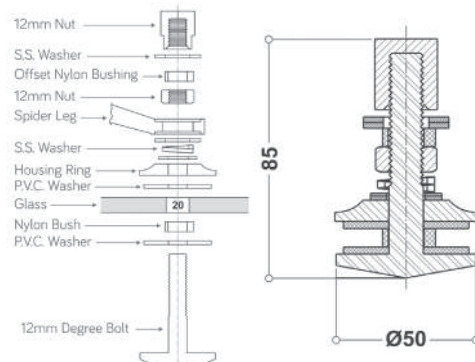
Fix Head Routel Flat

Size: 50mm

Material: SS 304, SS 316

Finish: SSS, PSS

With Teflon Washers to Prevent Glass from Damage



## D-RF03

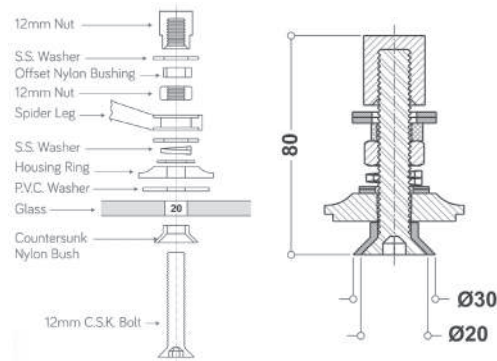
Fix Head Routel Degree

Size: 50mm

Material: SS 304, SS 316

Finish: SSS, PSS

With Teflon Washers to Prevent Glass from Damage



## D-RF04

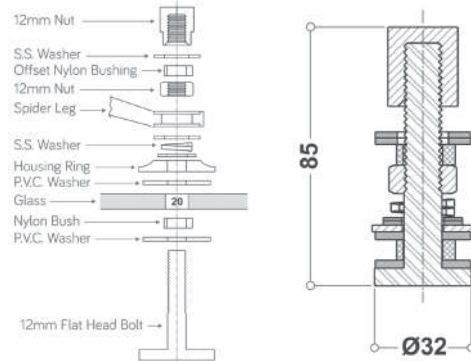
Counter Sunk Routel

Size: 45mm

Material: SS 304, SS 316

Finish: SSS, PSS

With Teflon Washers to Prevent Glass from Damage



## D-RF05

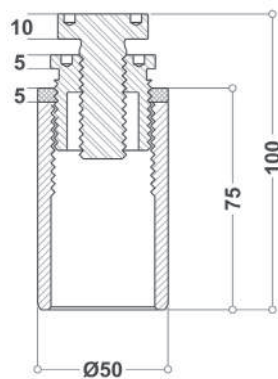
Fix Head Routel

Size: 32mm

Material: SS 304, SS 316

Finish: SSS, PSS

With Teflon Washers to Prevent Glass from Damage



## D-RF06

Spider Bolt for without Fin Spider

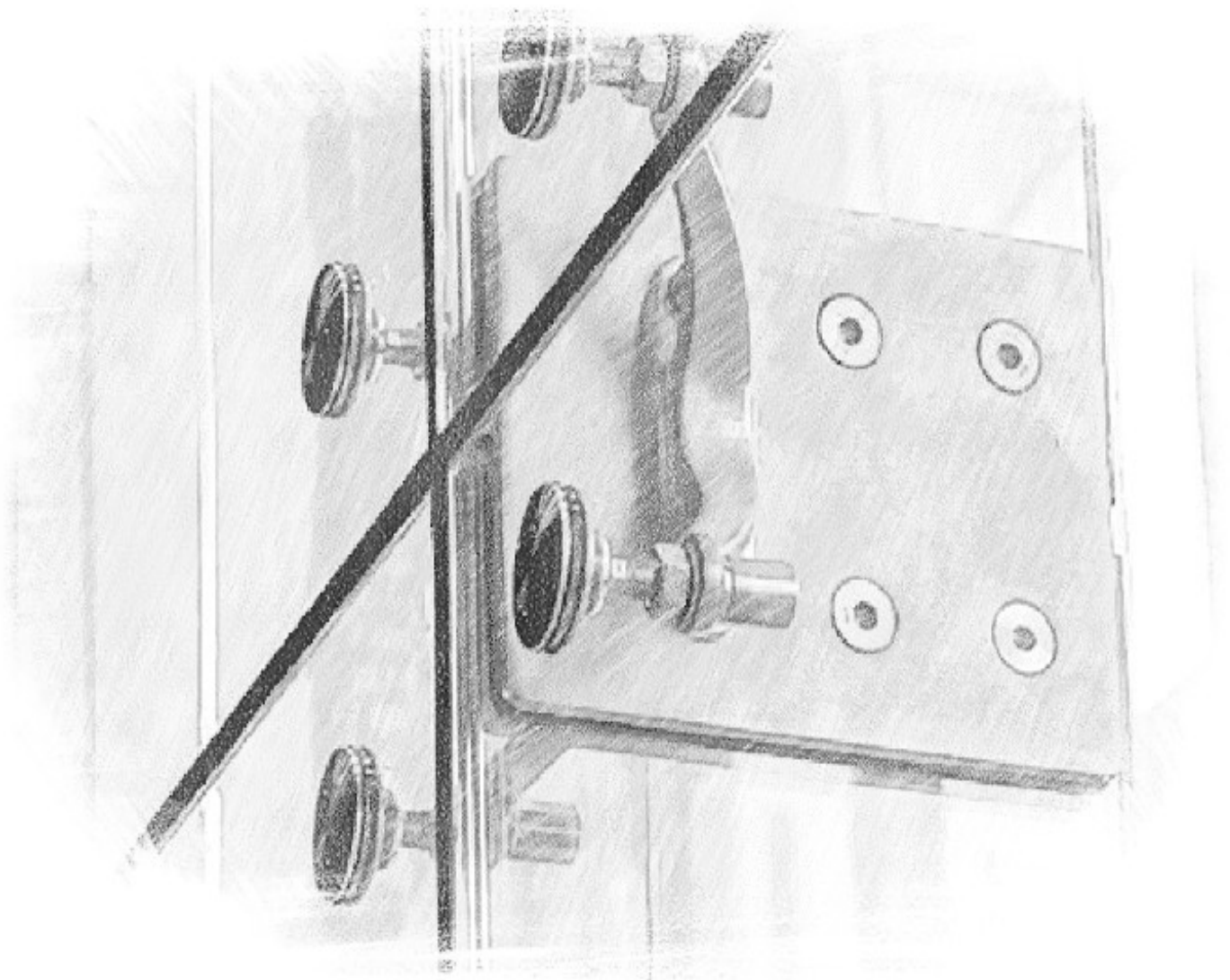
Material: SS 304, SS 316

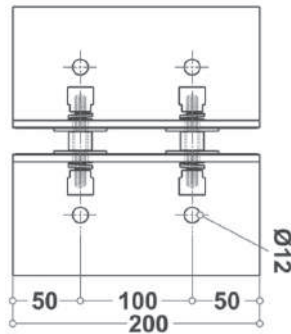
Finish: SSS, PSS

With Teflon Washers to Prevent Glass from Damage

# Fin Plates & Splice Plates

Fin plate connections are a popular form of pinned steel connections and are commonly used for secondary beams in steel structures.





## D-FP01

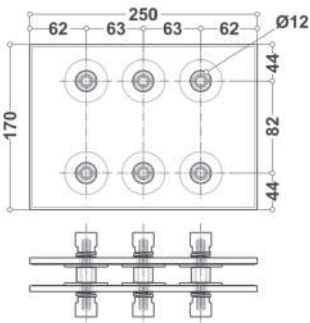
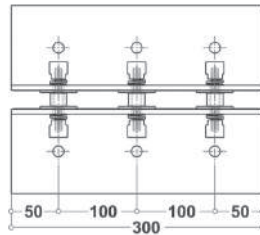
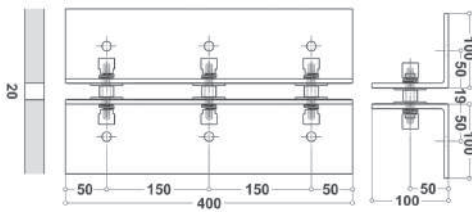
Fin Plate

Thickness: 6mm

Material: SS 304

Finish: SSS, PSS

With Teflon Washers to prevent Glass from Damage



## D-SP01

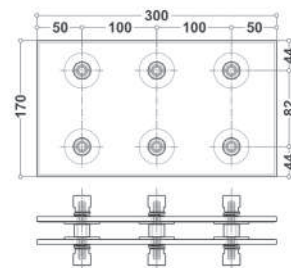
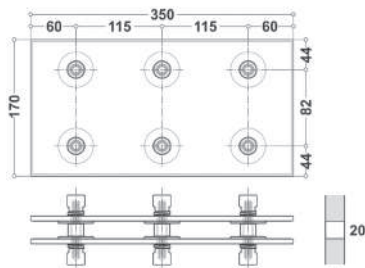
Splice Plate

Thickness: 5mm

Material: SS 304

Finish: SSS, PSS

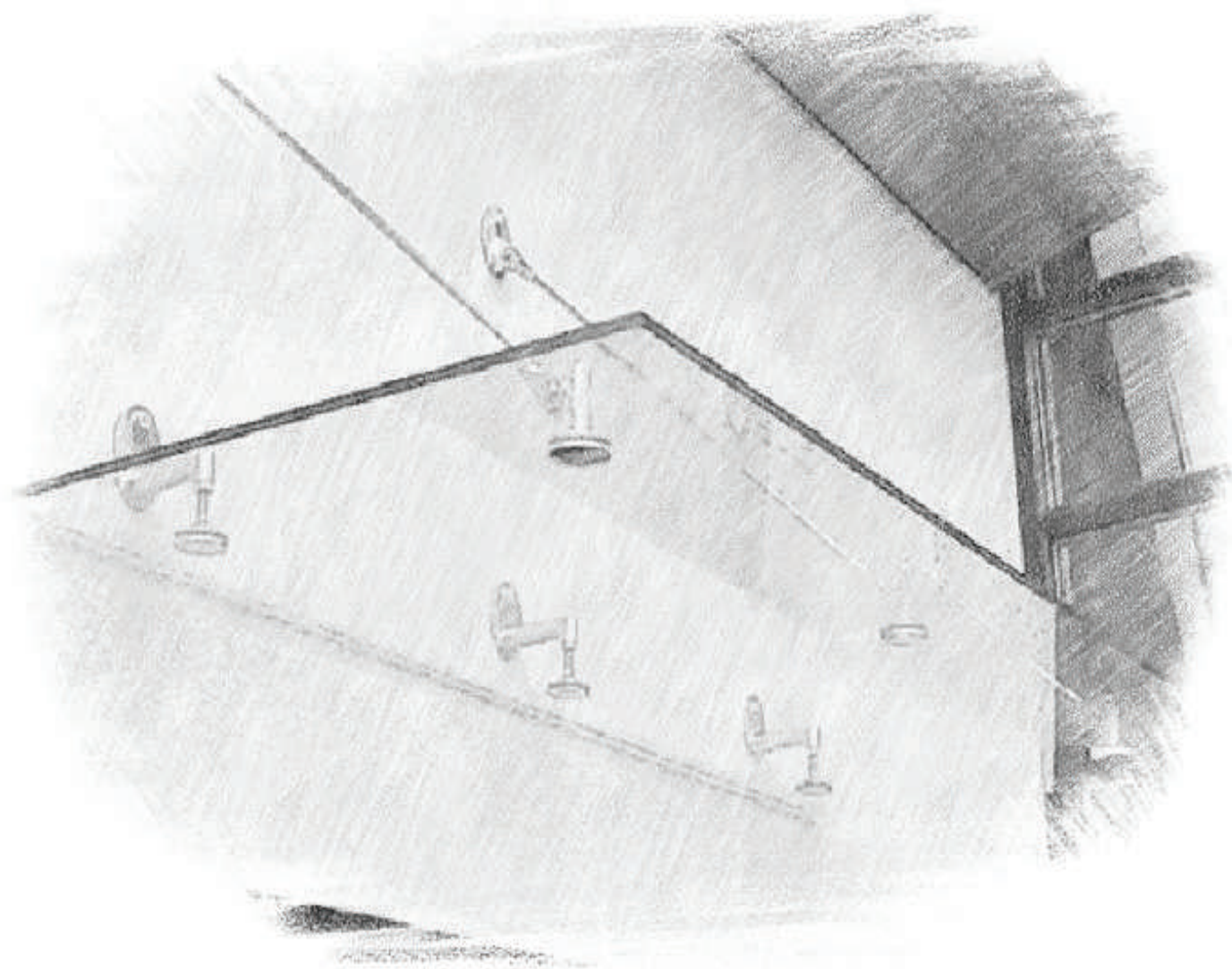
With Teflon Washers to prevent Glass from Damage

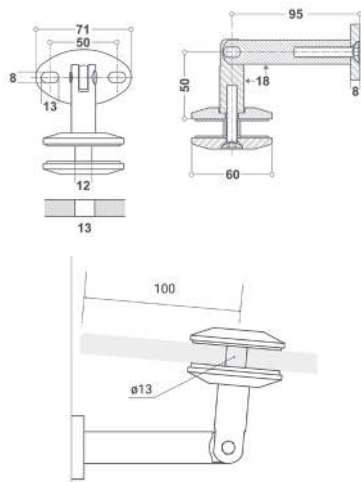




# Canopy Fittings

Dorzen offers high quality canopy fittings are designed to connect glass with wall. They can resist climate conditions.





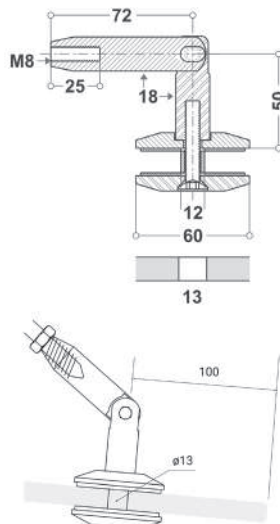
## D-CF01

Wall to Glass Connector

**Material:** SS 304

**Finish:** SSS, PSS

With Teflon Washers to prevent Glass from Damage



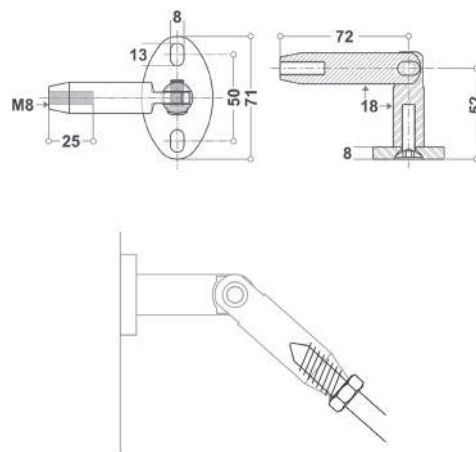
## D-CF02

Rod to Glass Connector

**Material:** SS 304

**Finish:** SSS, PSS

With Teflon Washers to prevent Glass from Damage



## D-CF03

Wall to Rod Connector

**Material:** SS 304

**Finish:** SSS, PSS

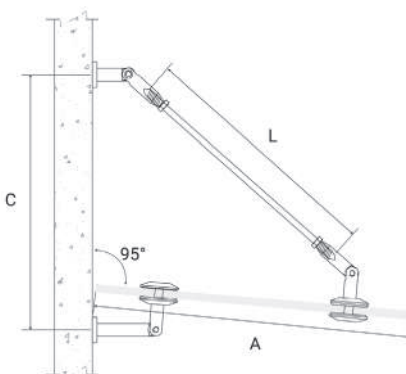
**Material:** SS 304  
**Finish:** SSS, PSS  
With Teflon Washers to prevent Glass from Damage

With Teflon Washers to prevent Glass from Damage

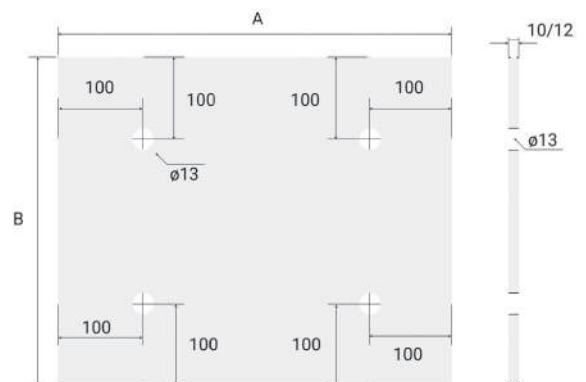


Finish: SSS, PSS

Finish: SSS, PSS



A	B	C	L
600	900	480	525
700	900	560	655
800	1000	650	790
900	1000	720	925
1000	1200	800	1055
1100	1300	880	1190
1200	1500	960	1325
1300	1600	1040	1455
1400	1800	1120	1590
1500	2000	1200	1725

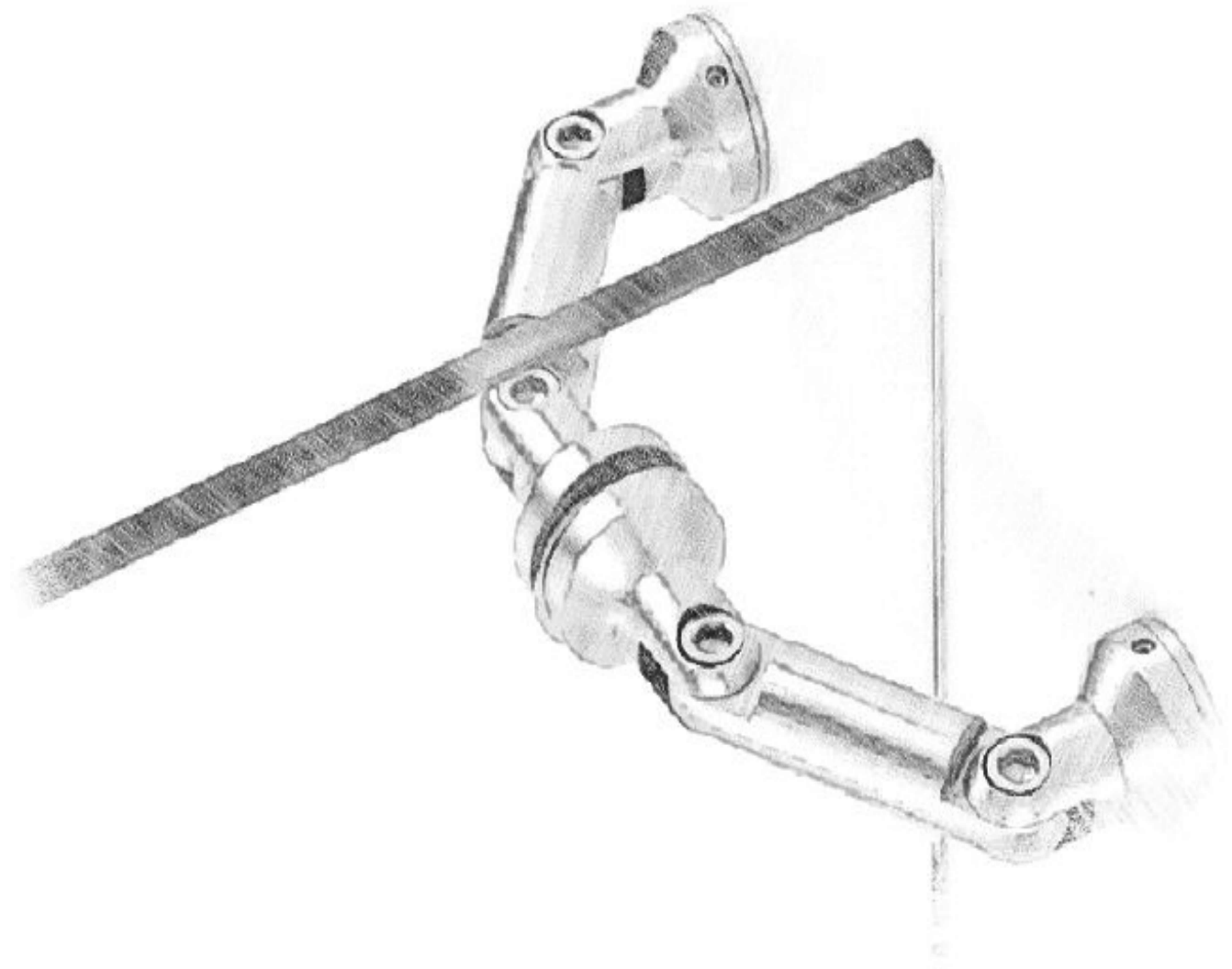


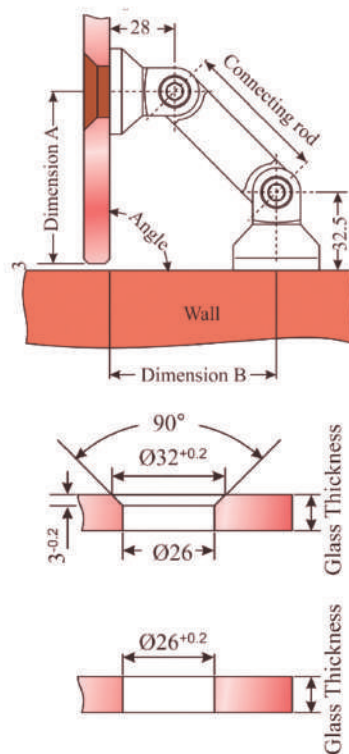
**Fig D-CF.** Fitting Measurement



# Point Fixed Glass Fittings

Point Fixed Architectural Glass Fittings comprises of Wall to Glass & Glass to Glass Connectors along with door fittings suitable for swing doors.





## D-PFS01

Adjustable Wall to Glass Connector

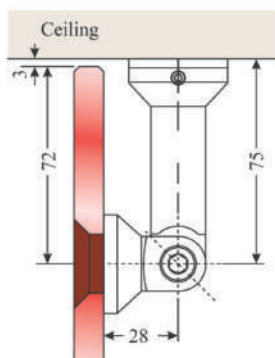
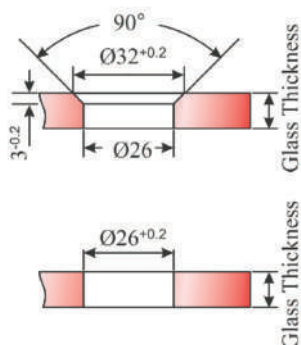
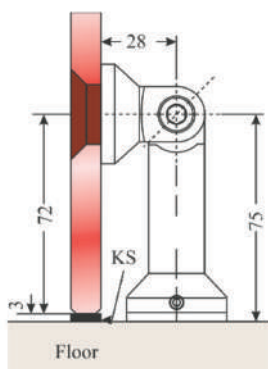
Material: SS 304

Finish: SSS, PSS

Size: 52.5mm, 60mm, 82mm, 103mm

	Connecting Rod Length in mm			
	52.5	60	82	103
Angle	A & B	A & B	A & B	A & B
90°	67 & 75	72 & 80	87.5 & 96	102.5 & 111

Table D-PFS01. Corner Connection



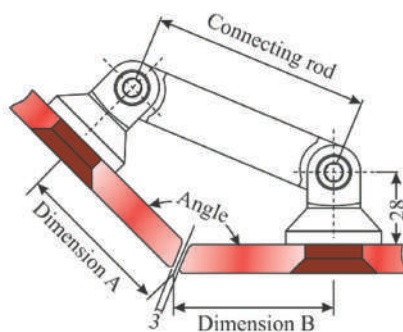
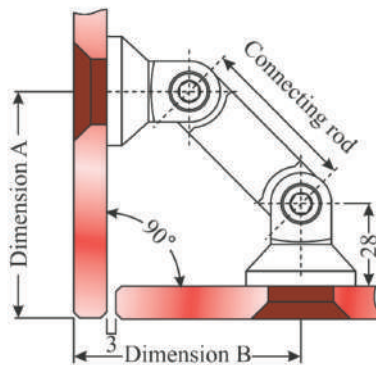
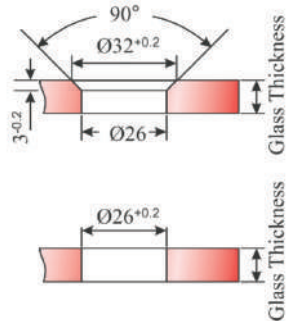
## D-PFS02

Fix Wall to Glass Connector

Material: SS 304

Finish: SSS, PSS

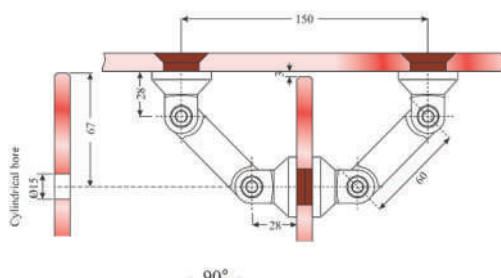
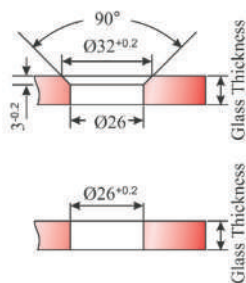
Size: 75mm, 103mm



**Size:** 52.5mm, 60mm, 82mm, 103mm

	Connecting Rod Length in mm			
	52.5	60	82	103
Angle	A & B	A & B	A & B	A & B
90°	75	80	96	-
95°	70	75	90	-
100°	66	71	85	-
105°	62	67	81	-
110°	59	63	77	-
120°	52	56	69	-
125°	49	54	66	-
130°	47	51	63	-
135°	44	48	60	-
180°	-	-	-	50

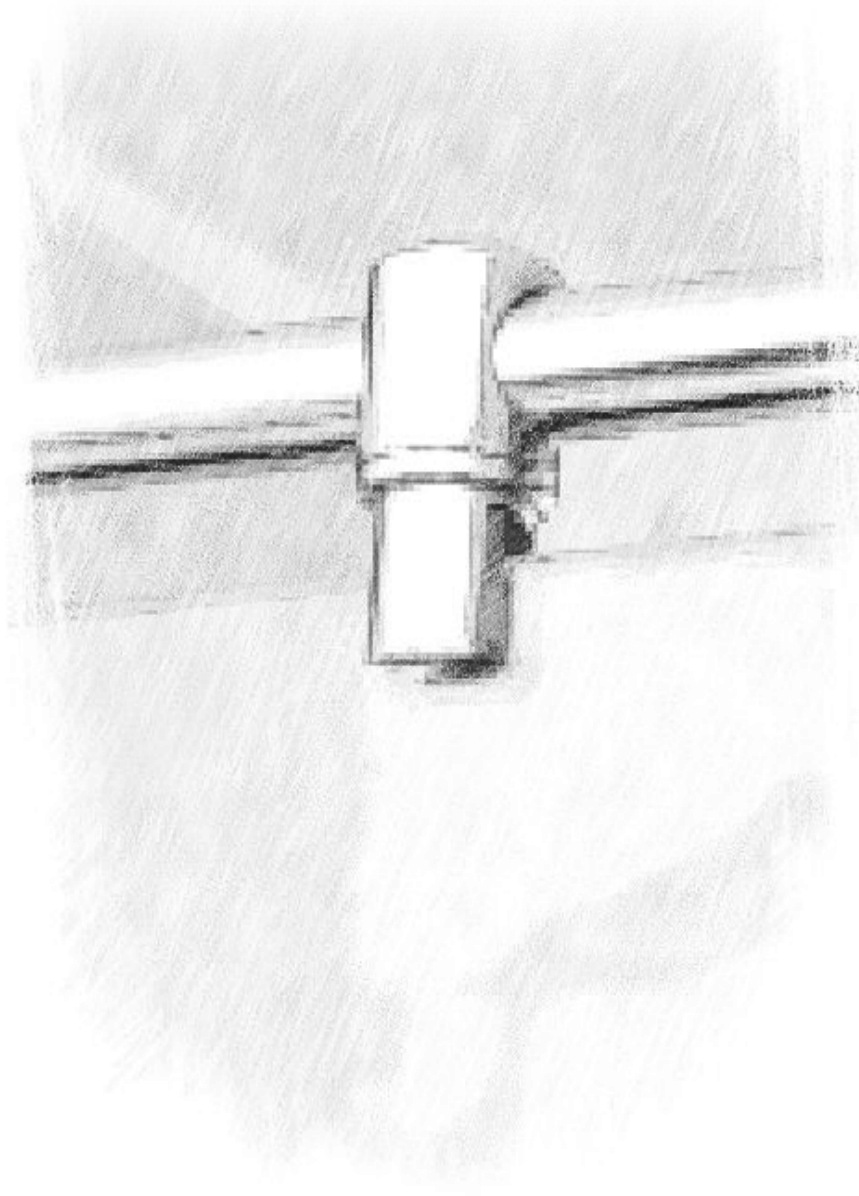
**Table D-PFS03.** Corner Connection

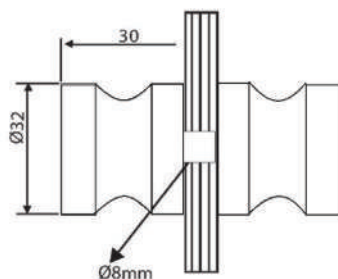


**Size:** 52.5mm, 60mm, 82mm, 103mm

# Shower Header Accessories

We have quality accessories for perfect use in shower headers. Which resist the stain due to moisture conditions.

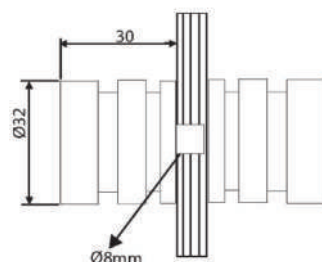




## D-SGK01

Glass Door Knob

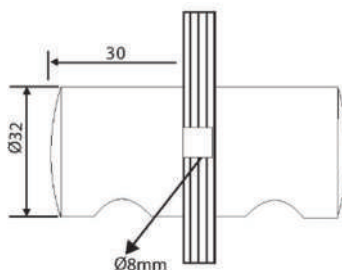
**Material:** SS 304, Aluminium  
**Finish:** CP



## D-SGK02

Glass Door Knob

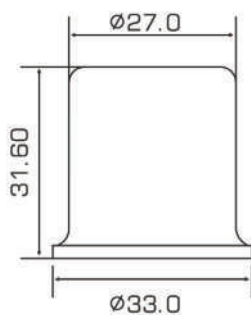
**Material:** SS 304, Aluminium  
**Finish:** CP



## D-SGK03

Glass Door Knob

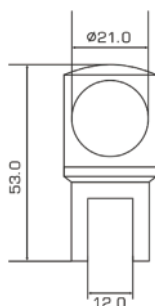
**Material:** SS 304, Aluminium  
**Finish:** CP



## D-SHB01

Shower Header Wall Socket

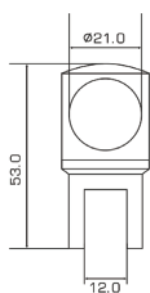
**Material:** Brass  
**Finish:** Chrome Plated, Matt  
With Grub Screw to hold the pipe  
Firm Seating with Wall



## D-SHB02

Shower Header Support Clamp

**Material:** Brass  
**Finish:** Chrome Plated, Matt  
With Grub Screw to hold the pipe  
Through hole for pipe

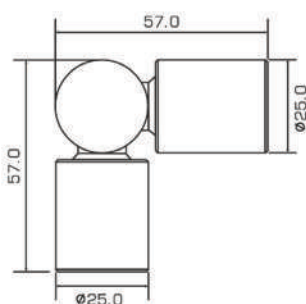


## D-SHB03

Shower Header End Clamp

**Material:** Brass

**Finish:** Chrome Plated, Matt  
With Grub Screw to hold the pipe  
Blind Hole on One End

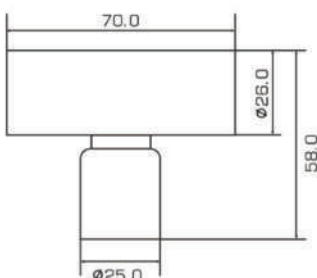


## D-SHB04

Shower Header Clamp For 2 Way Connecting Pipe

**Material:** Brass

**Finish:** Chrome Plated, Matt  
With Grub Screw to hold the pipe  
Adjustable at any Angle

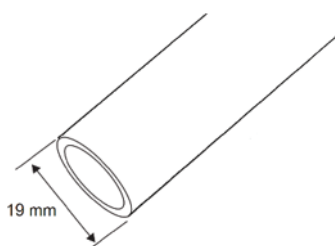


## D-SHB05

Shower Header Clamp For 3 Way Connecting Pipe

**Material:** Brass

**Finish:** Chrome Plated, Matt  
With Grub Screw to hold the pipe



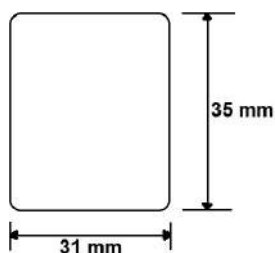
## D-SHB06

Reinforcing Pipe

**Material:** SS 304

**Finish:** SSS, PSS

**Length:** 3 Meter  
19mm Outer Diameter Pipe



## D-SHA01

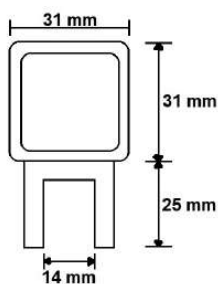
Shower Header Wall Socket

**Material:** SS 304

**Finish:** SSS, PSS

With Grub Screw to hold the pipe  
Firm Seating with Wall





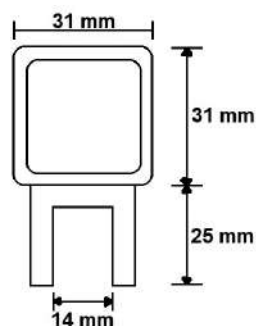
## D-SHA02

Shower Header Support Clamp

**Material:** SS 304

**Finish:** SSS, PSS

With Grub Screw to hold the pipe  
Through hole for pipe



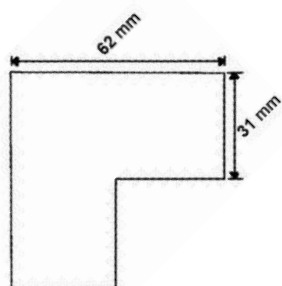
## D-SHA03

Shower Header End Clamp

**Material:** SS 304

**Finish:** SSS, PSS

With Grub Screw to hold the pipe  
Blind Hole on One End



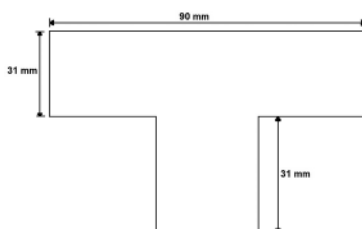
## D-SHA04

Shower Header Clamp For 2 Way Connecting  
Pipe

**Material:** SS 304

**Finish:** SSS, PSS

With Grub Screw to hold the pipe  
To Connect Pipe at 90°



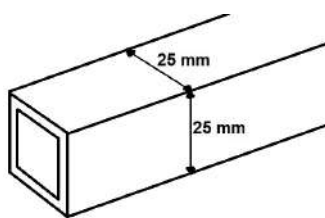
## D-SHA05

Shower Header Clamp For 2 Way Connecting  
Pipe

**Material:** SS 304

**Finish:** SSS, PSS

With Grub Screw to hold the pipe



## D-SHA06

Reinforcing Pipe

**Material:** SS 304

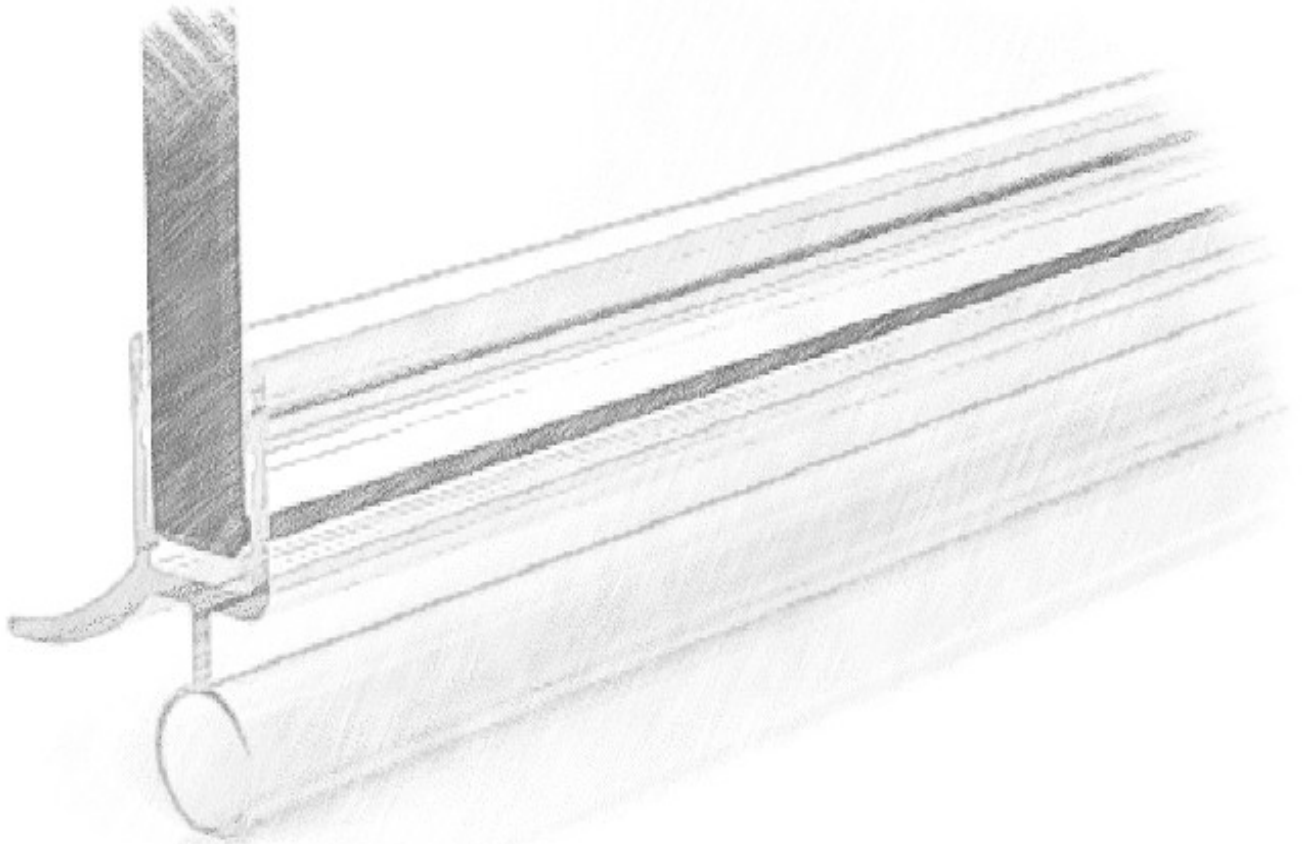
**Finish:** SSS, PSS

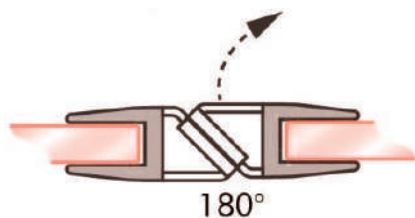
**Finish:** 3 Meter

25x25mm Outer Pipe Size

# PVC Seals

Seal is used to prevent the water leakage between floor and the openable door, to be used as bottom seal.





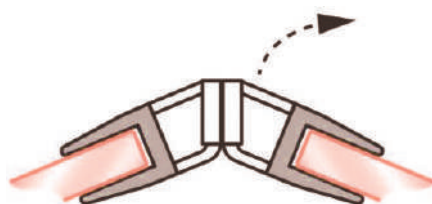
## D-MPS01

180° Magnetic Seal

Separate product for 8 mm, 10 mm, and 12 mm glass.

**Material:** PVC

**Size:** 2.2 Meter



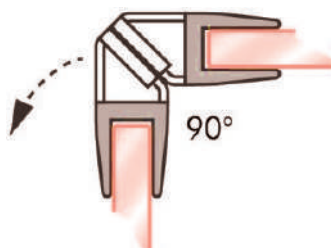
## D-MPS02

135° Magnetic Seal

Separate product for 8 mm, 10 mm, and 12 mm glass.

**Material:** PVC

**Size:** 2.2 Meter



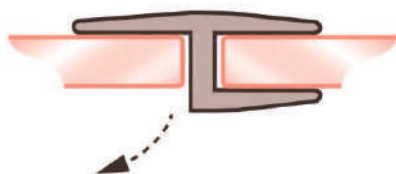
## D-MPS03

90° Magnetic Seal

Separate product for 8 mm, 10 mm, and 12 mm glass.

**Material:** PVC

**Size:** 2.2 Meter



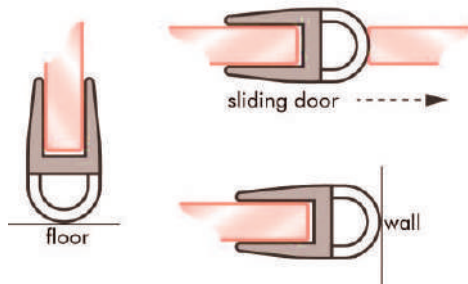
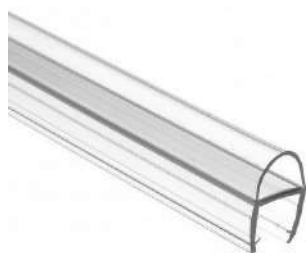
## D-PS01

Side Seal (H-Seal)

Separate product for 8 mm, 10 mm, and 12 mm glass.

**Material:** PVC

**Size:** 2.2 Meter



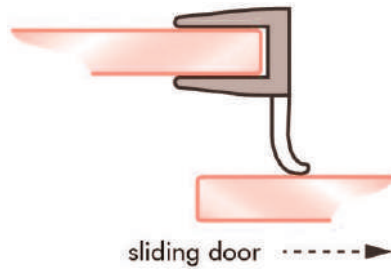
## D-PS02

Soft Nose Seal (D-Seal)

Separate product for 8 mm, 10 mm, and 12 mm glass.

**Material:** PVC

**Size:** 2.2 Meter



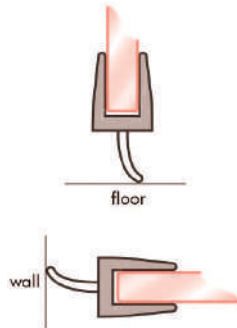
## D-PS03

### Sliding Door Seal (F-Seal)

Separate product for 8 mm, 10 mm, and 12 mm glass.

**Material:** PVC

**Size:** 2.2 Meter



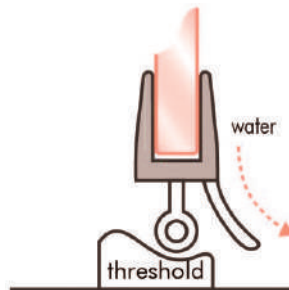
## D-PS04

### Centre Seal

Separate product for 8 mm, 10 mm, and 12 mm glass.

**Material:** PVC

**Size:** 2.2 Meter



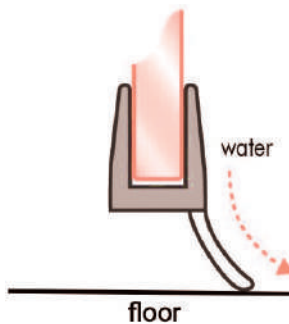
## D-PS05

### Sliding Door Seal (F-Seal)

Separate product for 8 mm, 10 mm, and 12 mm glass.

**Material:** PVC

**Size:** 2.2 Meter



## D-PS06

### Bottom Seal

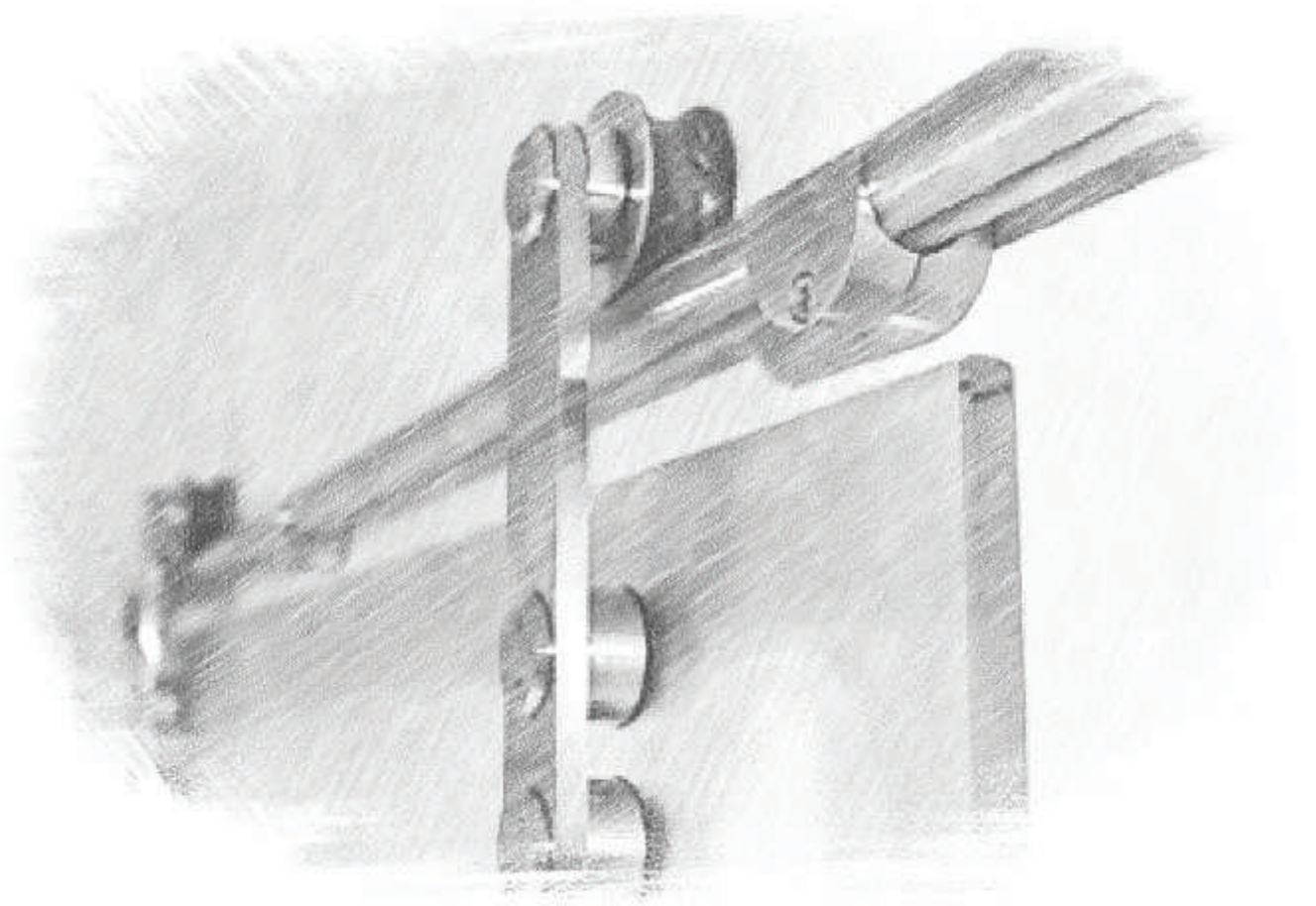
Separate product for 8 mm, 10 mm, and 12 mm glass.

**Material:** PVC

**Size:** 2.2 Meter

# Glass Sliding System Set

A sliding door is a type of door which opens horizontally by sliding, usually parallel to a wall. ... There are several types of sliding doors such as pocket doors, Arcadia doors, center opening doors, and bypass doors. Sliding doors are commonly used as shower doors, glass doors, screen doors, wardrobe doors or in vans.







## D-GSS01

### Small Coin Roller Set

Small Coin Roller	- 2 Nos.
Floor Guide	- 1 Nos.
Door Stopper	- 2 Nos.
Finish	- SSS, PSS



## D-GSS02

### Big Coin Roller Set

Big Coin Roller	- 2 Nos.
Floor Guide	- 1 Nos.
Door Stopper	- 2 Nos.
Finish	- SSS, PSS

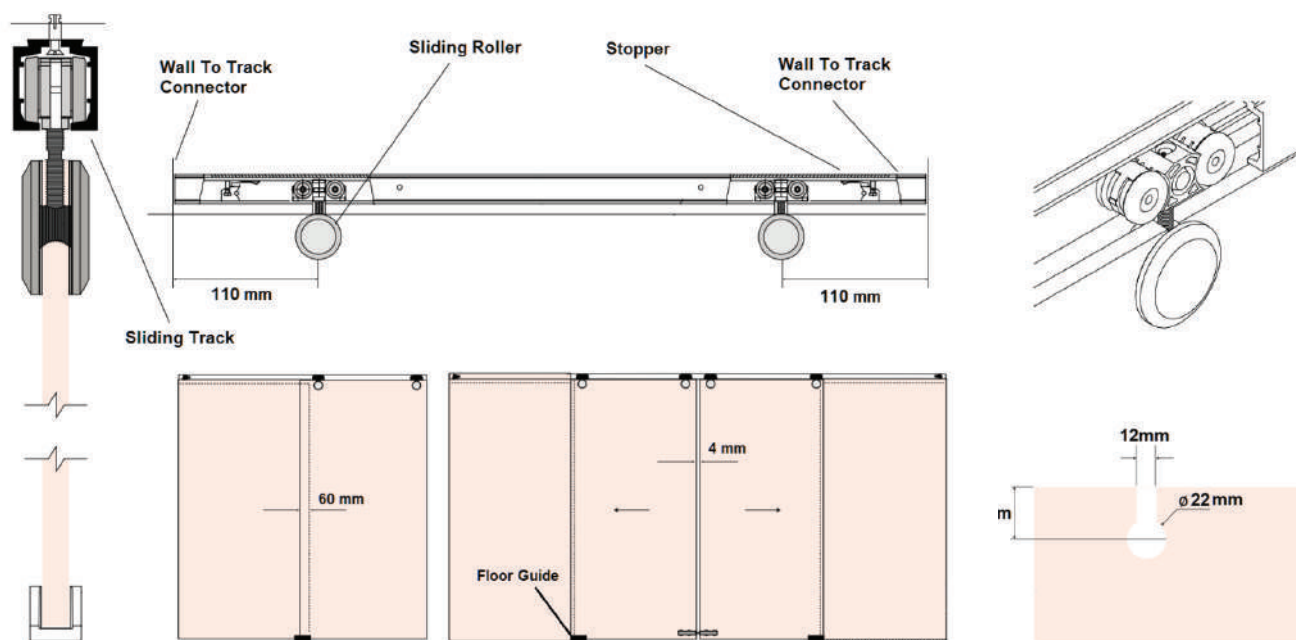


Fig D-GSS01 & D-GSS02. Fitting Measurement

Maximum weight of door	- 80 Kg/per door
Glass Thickness	- 10 & 12 mm Glass



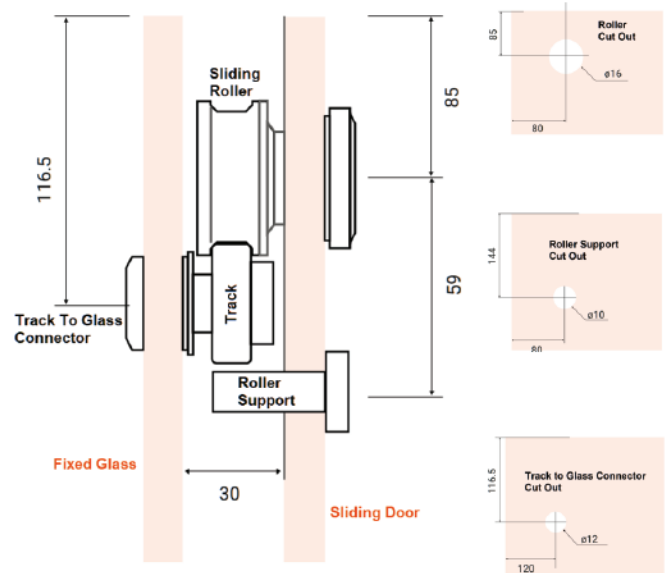
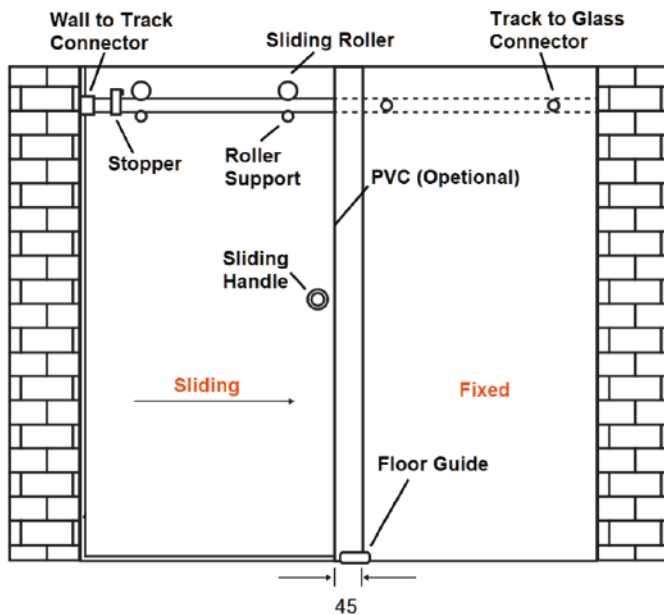


## D-GSS03

### Shower Sliding System Set

Sliding Door Roller	- 2 Nos.
Roller Support	- 2 Nos.
Track to Glass Connector	- 2 Nos.
Floor Guide	- 1 Nos.
Wall To Track Connector	- 2 Nos.
Sliding Handle (50mm)	- 1 Nos.
Door Stopper	- 2 Nos.

Material	- SS 304
Finish	- SSS, PSS



Maximum weight of door	- 70 Kg/per door
Glass Thickness	- 8 to 10mm Glass

Designed for 180° Installation.  
Optional 90° design, each side does not to exceed 1000mm.  
For applications of 180° maximum width 2000mm x 1800mm height.

**Fig D-GSS03.** Fitting Measurement

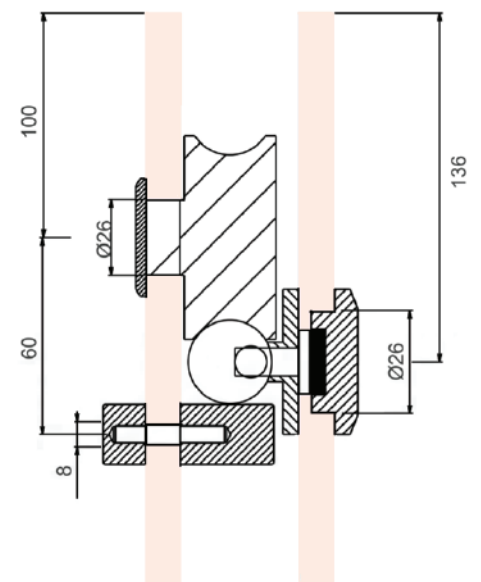
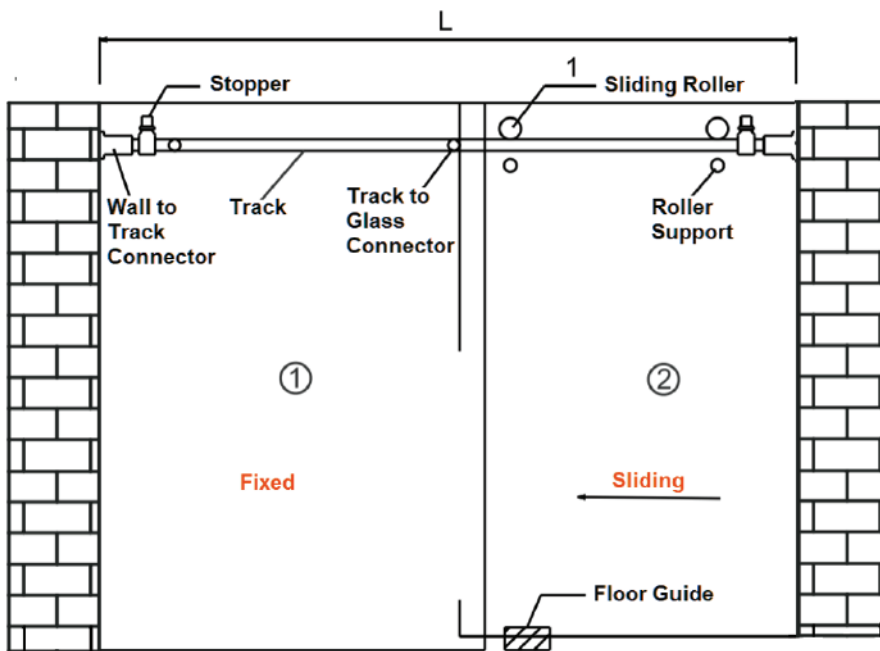


## D-GSS04

### Shower Sliding System Set

Sliding Door Roller	- 2 Nos.
Roller Support	- 2 Nos.
Track to Glass Connector	- 2 Nos.
Floor Guide	- 1 Nos.
Wall To Track Connector	- 2 Nos.
Sliding Handle (50mm)	- 1 Nos.
Door Stopper	- 2 Nos.

Material	- SS 304
Finish	- SSS, PSS



Maximum weight of door - 90 Kg/per door  
Glass Thickness - 8 to 10mm Glass

Designed for 180° Installation.  
Optional 90° design, each side does not to exceed 1000mm.  
For applications of 180° maximum width 2000mm x 1800mm height.

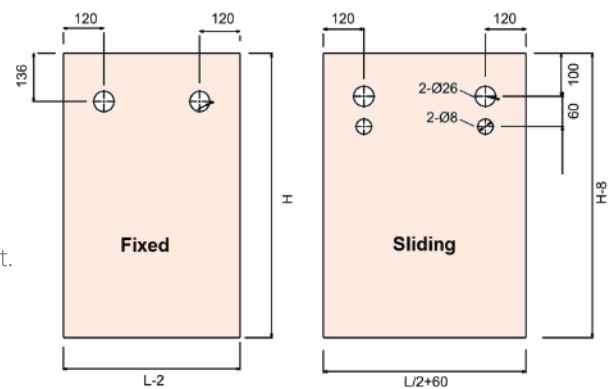


Fig D-GSS04. Fitting Measurement

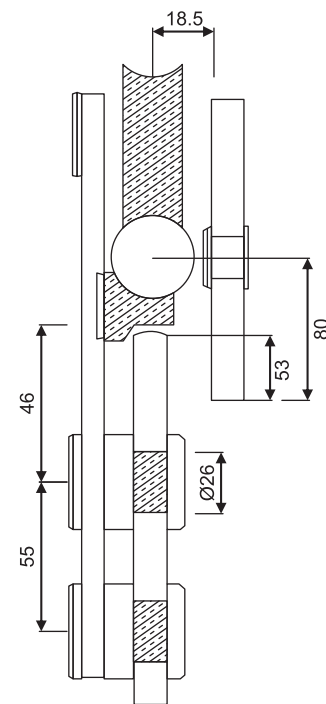
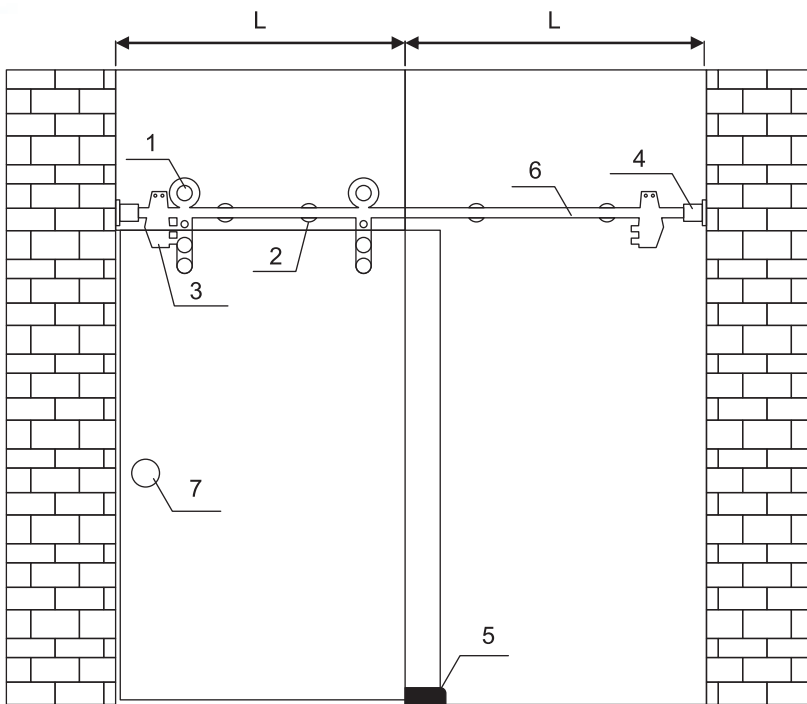


## D-GSS05

### Frameless Sliding Glass Door System

Sliding Door Roller 25mm	- 2 Nos.
Glass to Track Clamp	- 4 Nos.
Track End Cover	- 2 Nos.
Door Stopper	- 2 Nos.
Floor Guide	- 1 Nos.
Sliding Handle (50mm)	- 1 Nos.

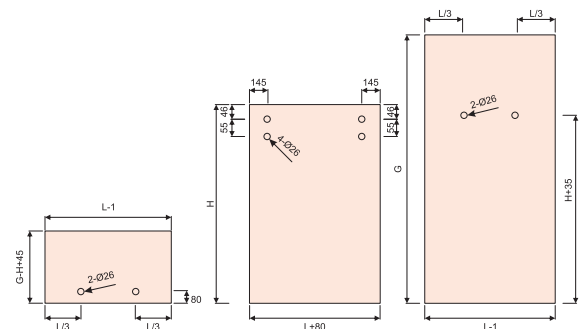
Material	- SS 304
Finish	- SSS, PSS



Maximum weight of door	- 100 Kg/per door
Glass Thickness	- 8 to 12mm Glass

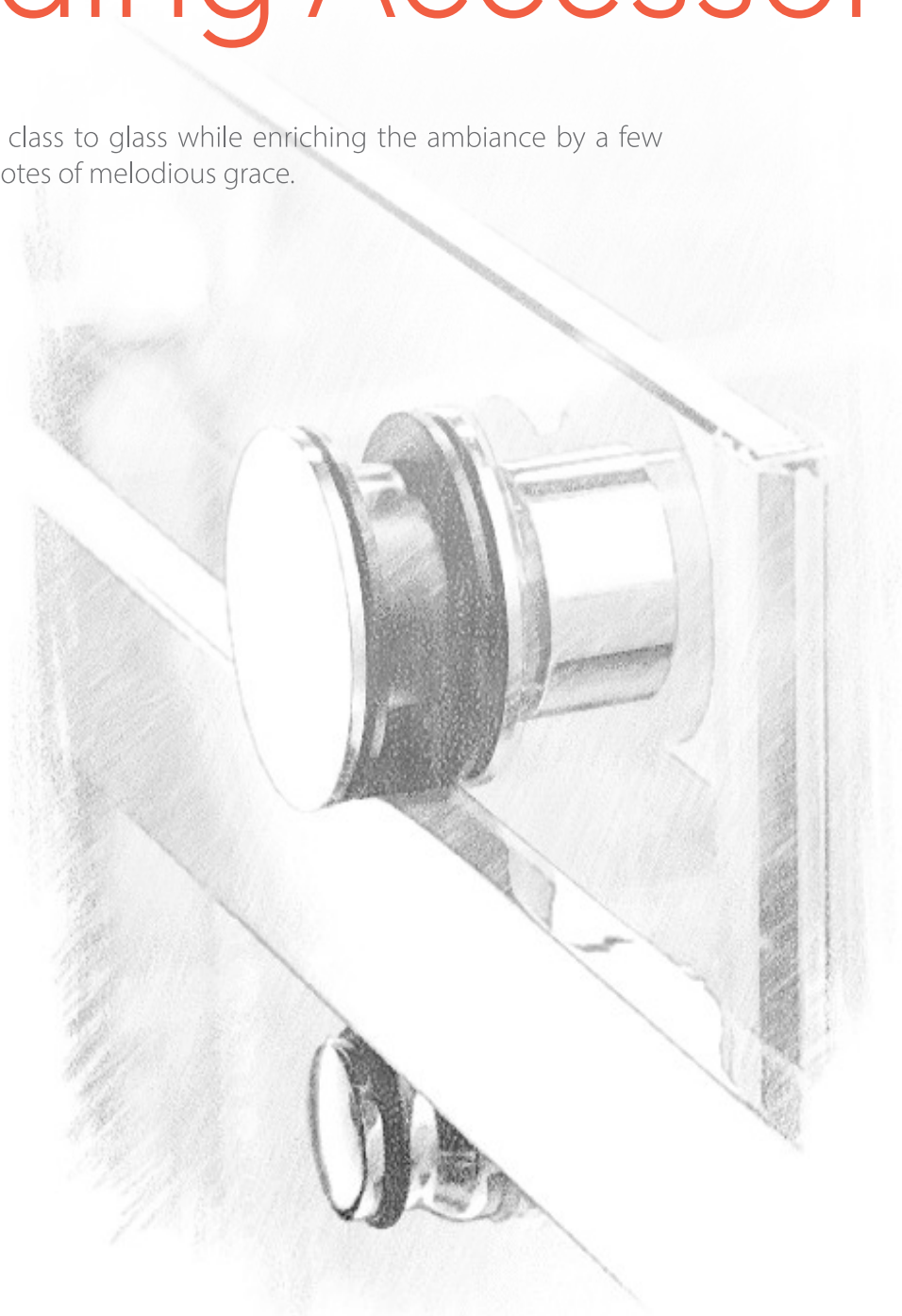
Designed for 180° Installation.  
Optional 90° design, each side does not to exceed 1000mm.  
For applications of 180° maximum width 2000mm x 1800mm height.

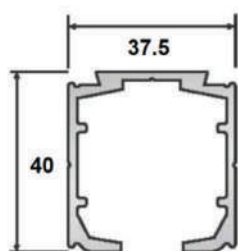
**Fig D-GSS05.** Fitting Measurement



# Sliding Tracks and Sliding Accessories

Add a new class to glass while enriching the ambiance by a few thousand notes of melodious grace.

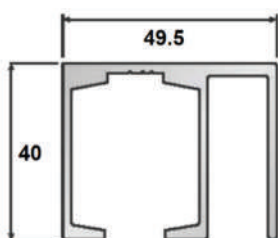
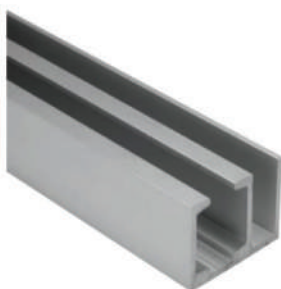




## D-ST01

Single Sliding Track

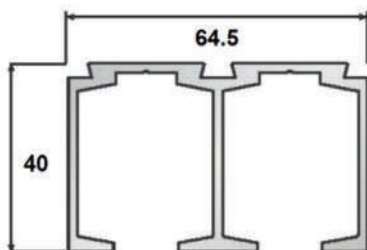
Material: Aluminum  
Length: 12 Feet, 16 Feet  
Finish: Aluminium Anodized



## D-ST02

Fix + Sliding Track

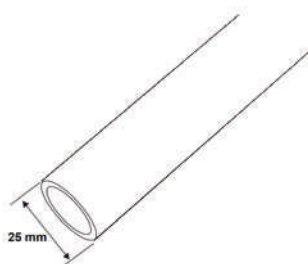
Material: Aluminum  
Length: 12 Feet, 16 Feet  
Finish: Aluminium Anodized



## D-ST03

Double Sliding Track

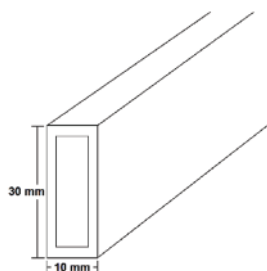
Material: Aluminum  
Length: 12 Feet, 16 Feet  
Finish: Aluminium Anodized



## D-ST04

Round Track

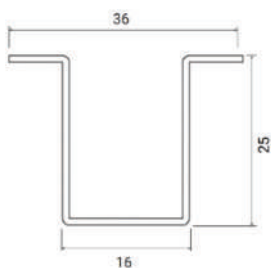
Material: SS 304  
Finish: SSS, PSS  
Length: 6 Meter  
Diameter: 19mm, 25mm



## D-ST05

Rectangle Sliding Track

Material: SS 304  
Finish: SSS, PSS  
Length: 6 Meter  
Size: 10mm x 30mm



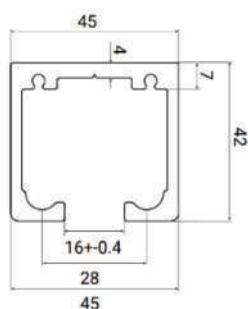
## D-SFS11

Bottom Floor Track

Material: SS304

Length: 12 Feet

Finish: SSS



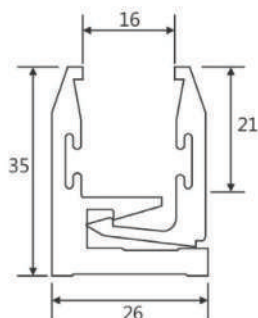
## D-SFS12

Top Sliding Track

Material: Aluminum

Length: 12 Feet, 16 Feet

Finish: Aluminium Anodized



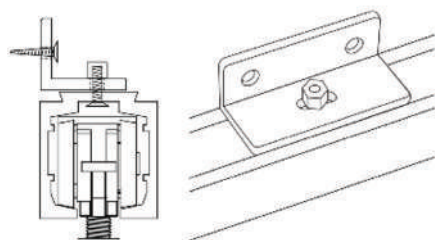
## D-ILGP01

Inter Locking Glazing Profile

Material: Aluminum

Length: 12 Feet

Finish: Aluminium Anodized



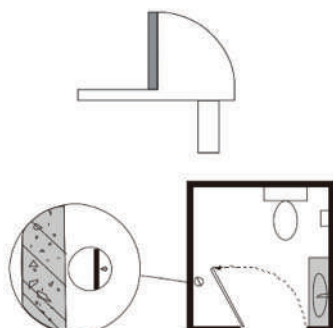
## D-SLA01

Wall To Track Clamp

Material: SS 304

Finish: SSS

Thickness: 4mm, 6mm



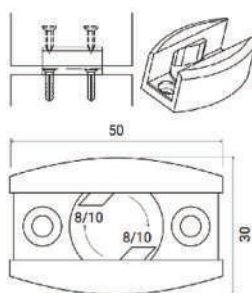
## D-SLA02

Door Stopper

Material: SS 304, SS202

Finish: SSS





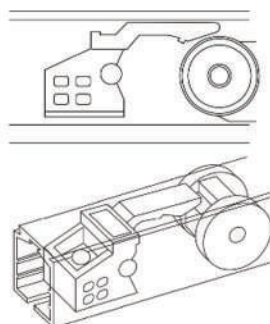
## D-SLA03

Floor Guide

Fit for Glass Thickness: 10mm, 12mm

Material: SS304, SS202, Brass

Finish: SSS, PSS

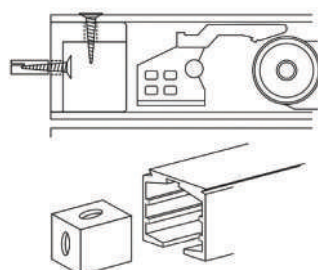


## D-SLA04

Door Stopper

Material: PVC

Finish: White

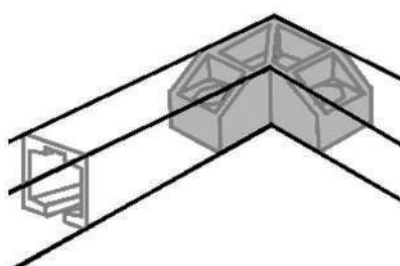


## D-SLA05

End Bracket for Sliding Track

Material: PVC

Finish: White

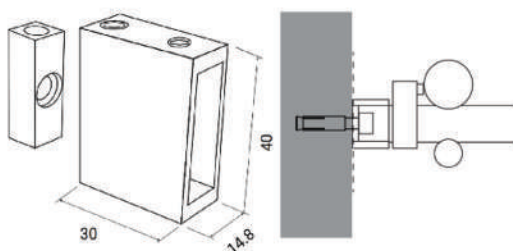


## D-SLA06

90° Track Connector

Material: PVC

Finish: White

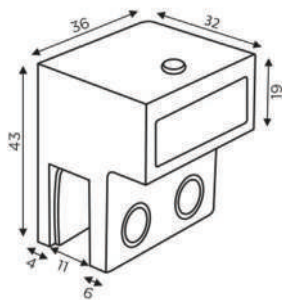


## D-SLA07

Wall to Track Connector

Material: SS 304

Finish: SSS

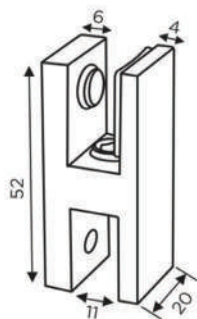


## D-SLA08

Track to Track 90° Connector

Material: SS304

Finish: SSS



## D-SLA09

Track to Track 90° Connector

Fit for Glass Thickness: 8mm, 12mm

Material: SS304

Finish: SSS



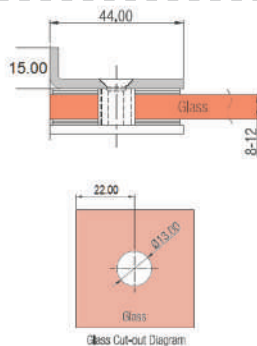
## D-SLA10

Clamp for Fixing Sliding Track

Fit for Glass Thickness: 8mm, 12mm

Material: SS304

Finish: SSS



## D-SLA11

Center Connector

Fit for Glass Thickness: 8mm, 12mm

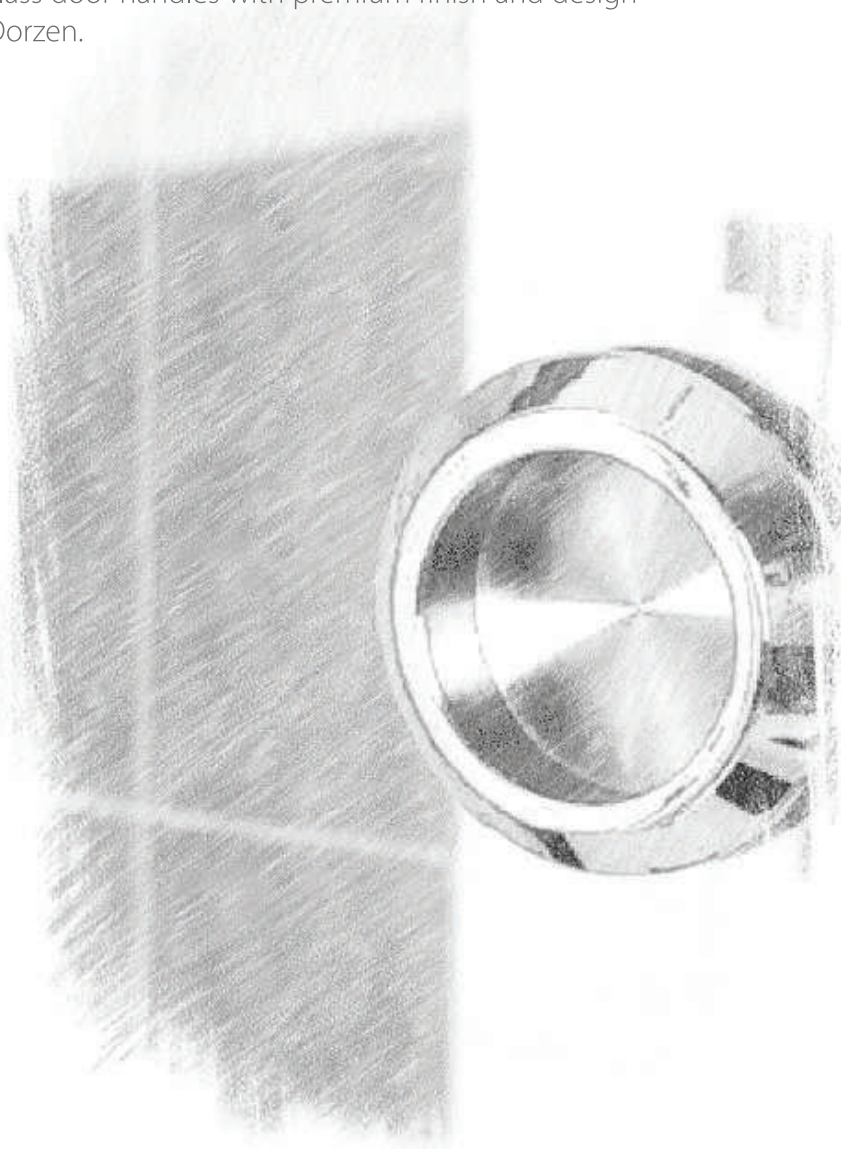
Material: SS304

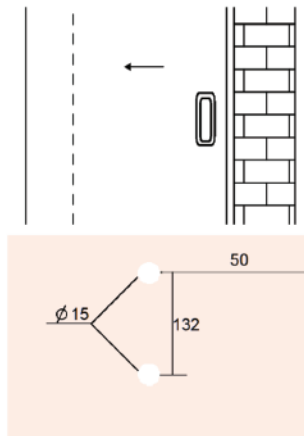
Finish: SSS, PSS

Thickness: 4mm

# Sliding Glass Door Handle

A handle, knob, or lever is the component of door hardware that is used to unlatch the door panel and pull it open or push it closed. Wide range of Glass door handles with premium finish and design are available at Dorzen.





## D-SGH01

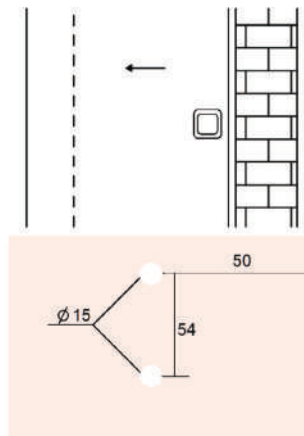
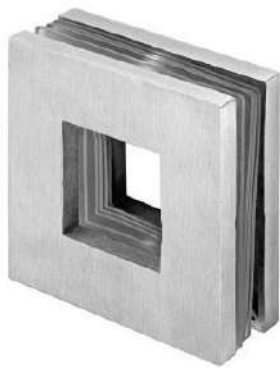
Sliding Glass Door Handle

Fit for glass thickness: 8mm-12mm

Material: SS 304

Finish: SSS, PSS

Centre to Centre: 132mm



## D-SGH02

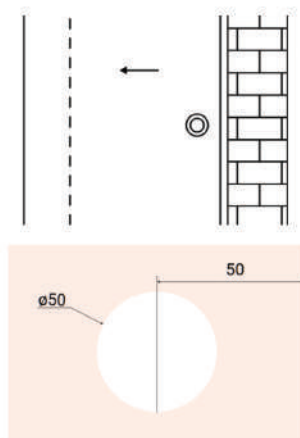
Sliding Glass Door Handle

Fit for glass thickness: 8mm-12mm

Material: SS 304

Finish: SSS, PSS

Centre to Centre: 55mm



## D-SGH03

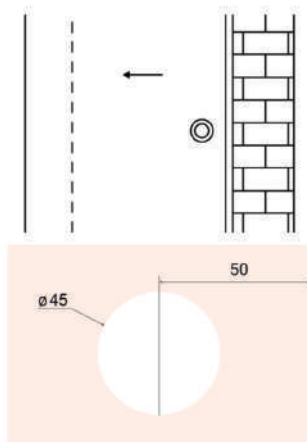
Sliding Glass Door Handle

Fit for glass thickness: 8mm-12mm

Material: SS 304

Finish: SSS, PSS

Centre to Centre: 50mm



## D-SGH04

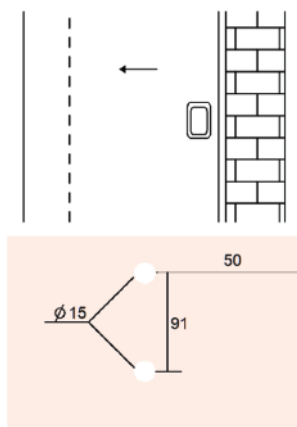
Sliding Glass Door Handle

Fit for glass thickness: 8mm-12mm

Material: Brass

Finish: CP

Size: 45mm



## D-SGH05

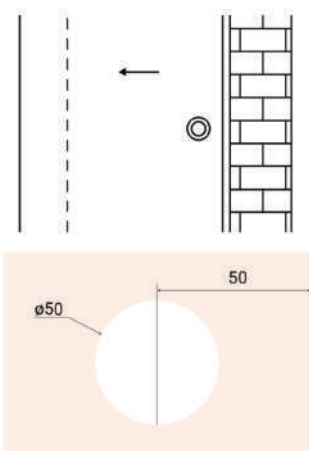
Sliding Glass Door Handle

Fit for glass thickness: 8mm-12mm

Material: SS 304

Finish: SSS, PSS

Centre to Centre: 91mm



## D-SGH06

Sliding Glass Door Handle

Fit for glass thickness: 8mm-12mm

Material: SS 304

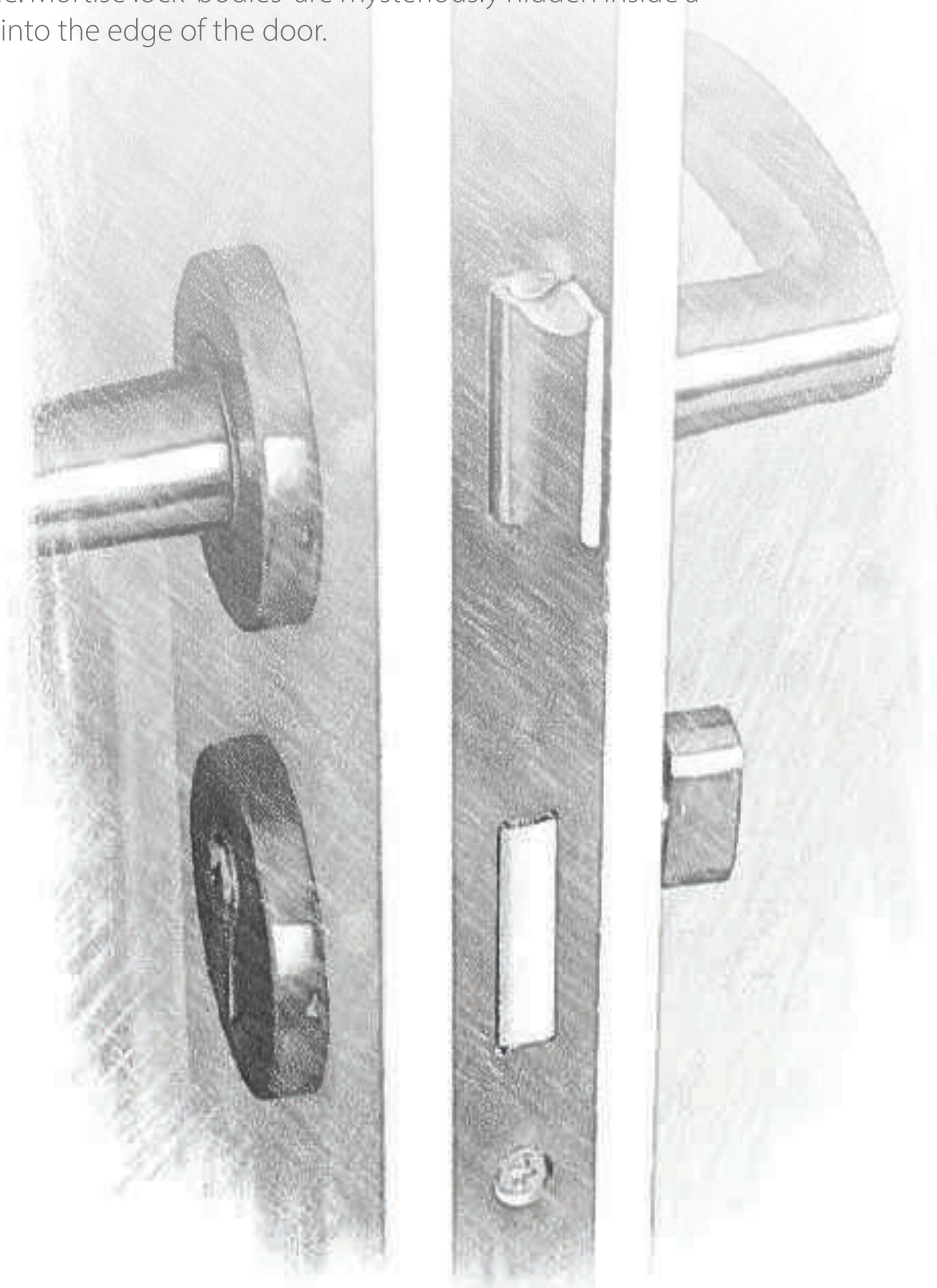
Finish: SSS, PSS

Size: 50mm

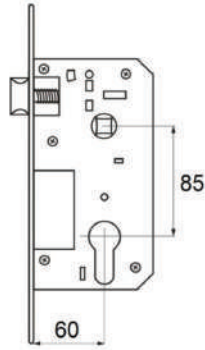


# Mortise Lock Body

Mortise locks are assembled from many curiously odd-shaped, mechanical parts and enclosed inside a heavy-gauge steel case, punctured with circular and square holes that appear to represent a secret code. Mortise lock 'bodies' are mysteriously hidden inside a pocket, cut into the edge of the door.







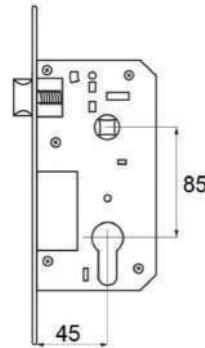
## D-ML01

Mortise Lock Body

Material: SS, MS

Finish: SS, CP

Size: 60mm x 85mm



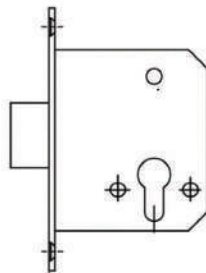
## D-ML02

Mortise Lock Body

Material: SS, MS

Finish: SS, CP

Size: 45mm x 85mm



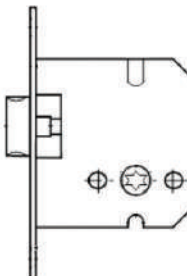
## D-ML03

Dead Lock

Material: SS, MS

Finish: SS, CP

Size: 45mm



## D-ML04

Baby Latch

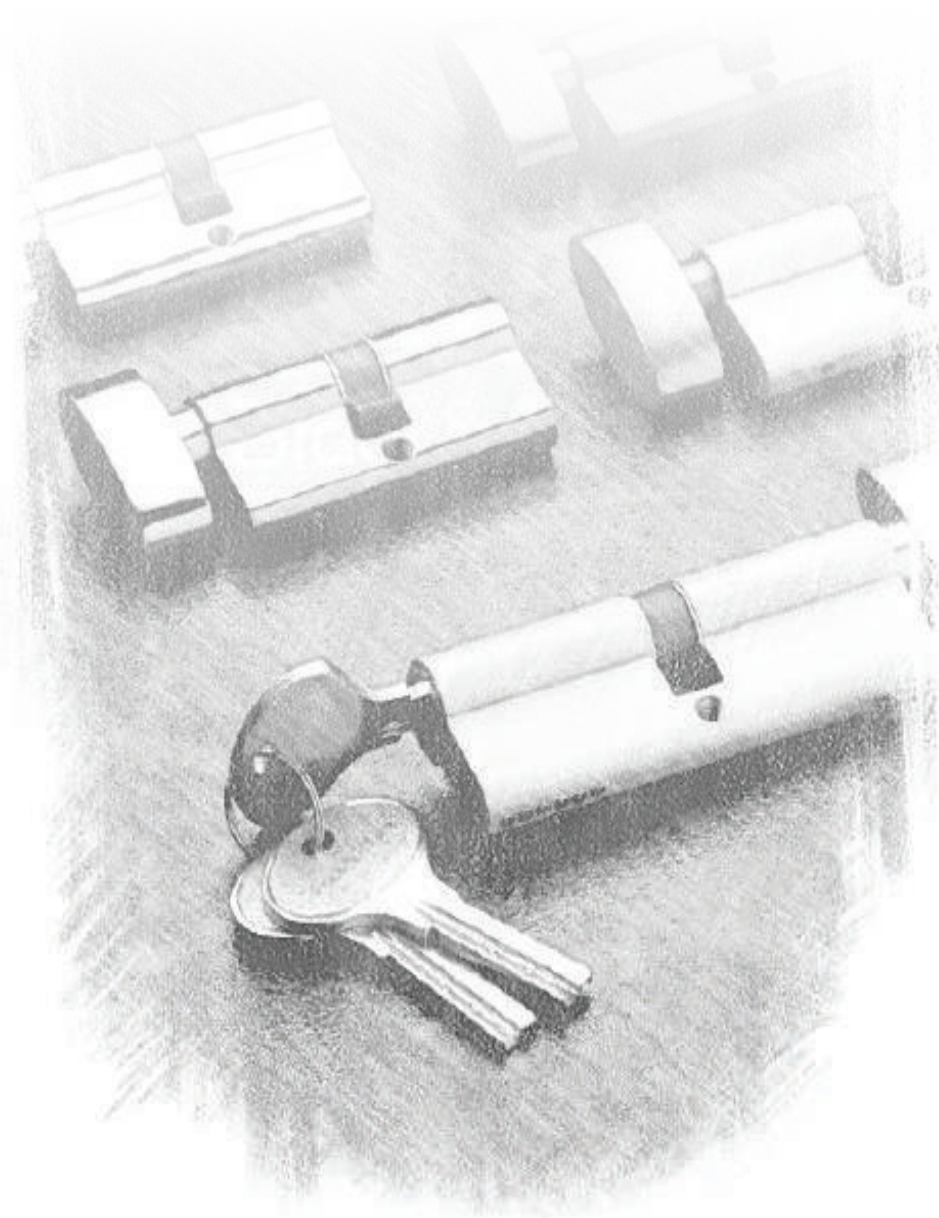
Material: SS, MS

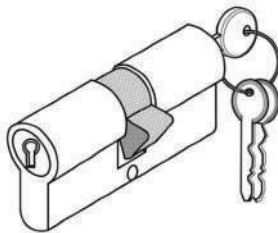
Finish: SS, CP

Size: 45mm

# Euro Profile Cylinder

The euro profile cylinder lock system is specially designed for industrial use but can also be used in areas like bathroom etc. ... The locks have features like both side keys, one side key and other side knob, one side knob and other side coin, one side key and one side knob.





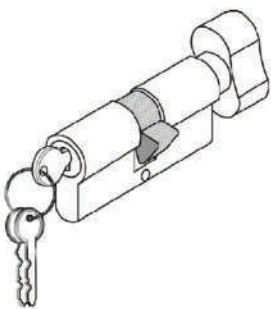
## D-EPC01

Both Side Key Cylinder

Material: Brass

Finish: SSS, CP

Size: 60, 70, 80, 90, 100mm



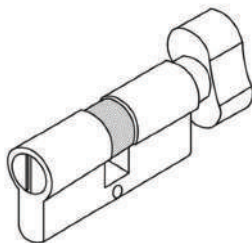
## D-EPC02

Both Side Key Cylinder

Material: Brass

Finish: SSS, CP

Size: 60, 70, 80, 90, 100mm



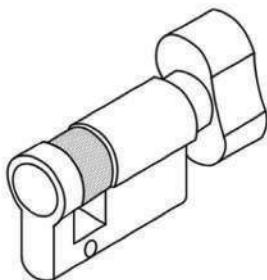
## D-EPC03

Keyless Cylinder

Material: Brass

Finish: SSS, CP

Size: 60, 70, 80, 90, 100mm



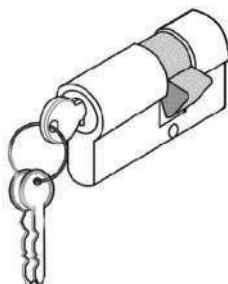
## D-EPC04

Half Cylinder with Knob

Material: Brass

Finish: SSS, CP

Size: 40, 45mm



## D-EPC05

Half Cylinder with Key

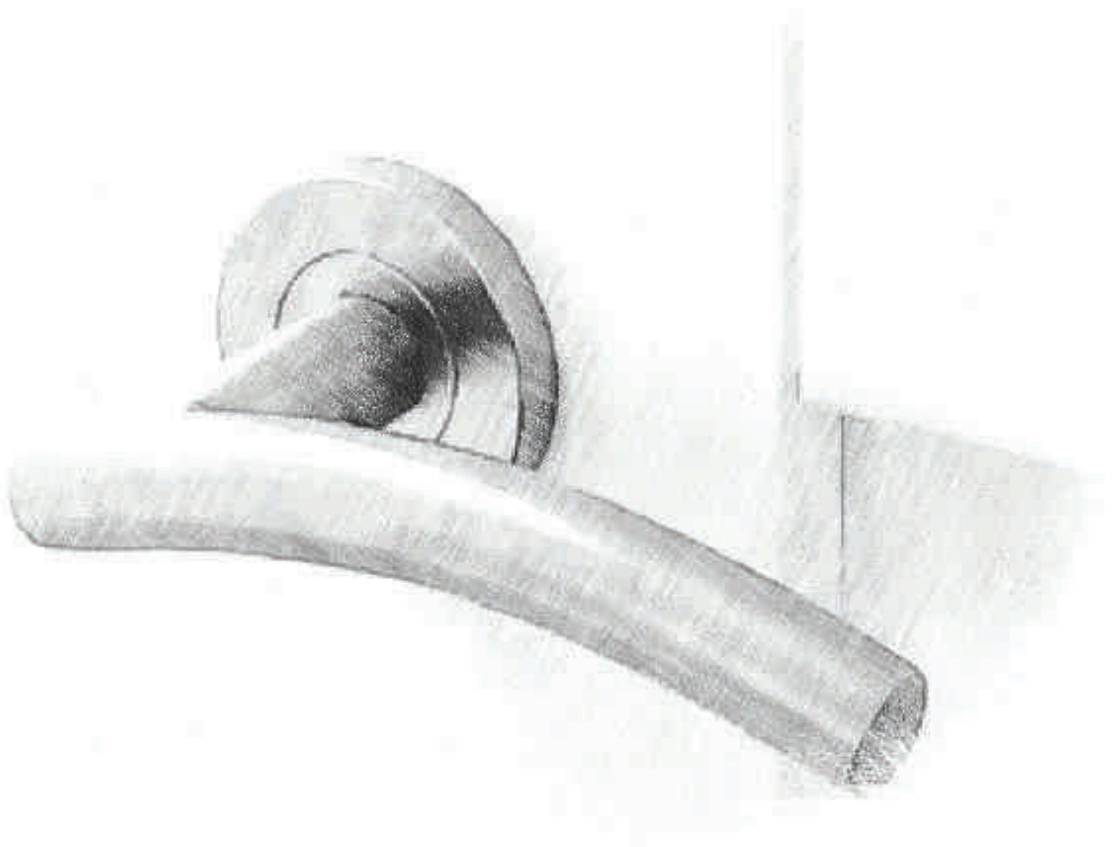
Material: Brass

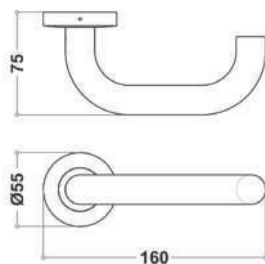
Finish: SSS, CP

Size: 40mm

# Mortise Handle

Mortise handle sets are where the lock set requires a pocket or “mortise” to be cut from the door to fit a box like cartridge into the width of the door.

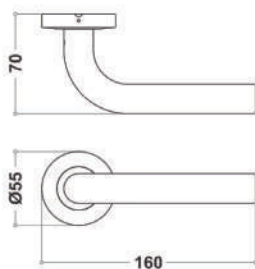




## D-MH01

Mortise Handle

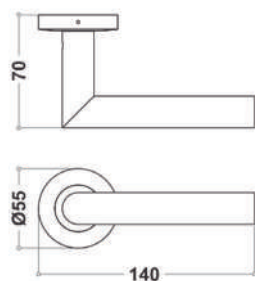
Material: SS 304  
Finish: SSS, PSS  
Size: 19mm & 22mm



## D-MH02

Mortise Handle

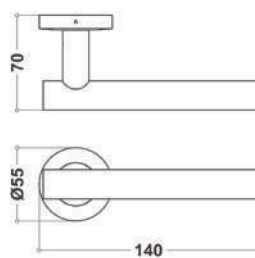
Material: SS 304  
Finish: SSS, PSS  
Size: 19mm & 22mm



## D-MH03

Mortise Handle

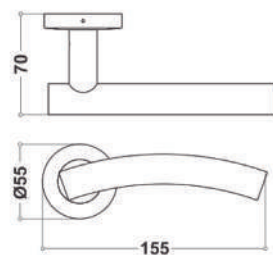
Material: SS 304  
Finish: SSS, PSS  
Size: 19mm & 22mm



## D-MH04

Mortise Handle

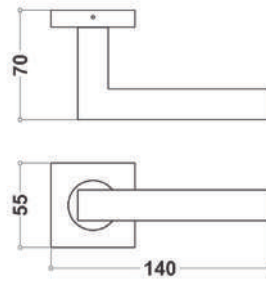
Material: SS 304  
Finish: SSS, PSS  
Size: 22mm



## D-MH05

Mortise Handle

Material: SS 304  
Finish: SSS, PSS  
Size: 22mm



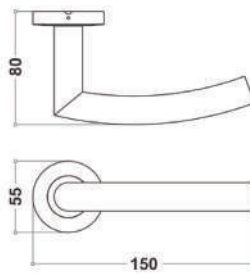
## D-MH06

Mortise Handle

Material: SS 304

Finish: SSS, PSS

Size: 20mm x 20mm



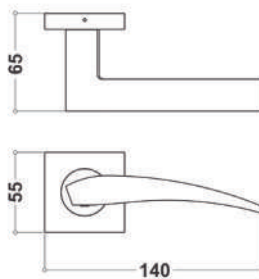
## D-MH07

Mortise Handle

Material: SS 304

Finish: SSS, PSS

Size: 22mm



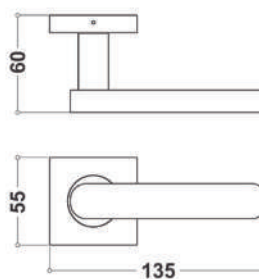
## D-MH08

Mortise Handle

Material: SS 304

Finish: SSS, PSS

Solid Casted



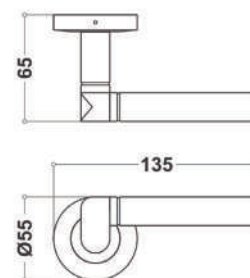
## D-MH09

Mortise Handle

Material: SS 304

Finish: SSS, PSS

Solid Casted



## D-MH10

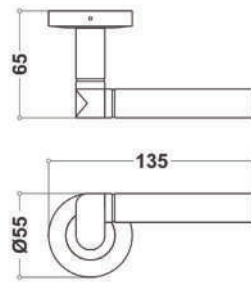
Mortise Handle

Material: SS 304

Finish: SSS, PSS

Solid Casted

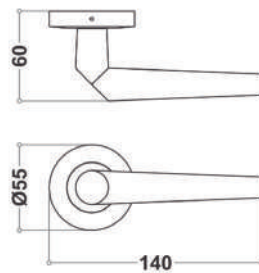




## D-MH11

Mortise Handle

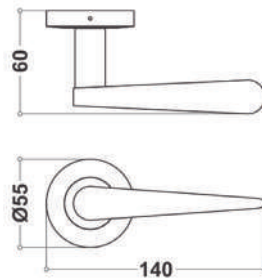
Material: SS 304  
Finish: SSS, PSS  
Solid Casted



## D-MH12

Mortise Handle

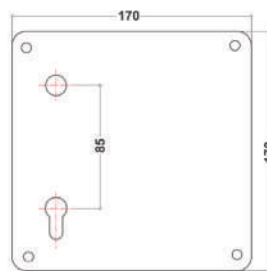
Material: SS 304  
Finish: SSS, PSS  
Solid Casted



## D-MH13

Mortise Handle

Material: SS 304  
Finish: SSS, PSS  
Solid Casted



## D-MH14

Mortise Handle with Plate

Material: SS 304  
Finish: SSS, PSS  
Size: 170mm x 170mm Plate  
with 19mm (D-MH01) Handle

# Glass Door Handle

Wide range of Glass door handles with premium finish and design are available at Dorzen. Certified & Tested with international standards. Which adds the elegance to glass doors.





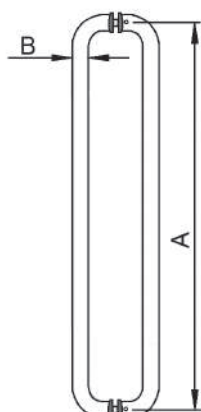
## D-GDH01

H Type Glass Door Handle

Material: SS 304, SS 202

Finish: SSS, PSS, Two Tone

A	B
200mm to 600mm	22mm
200mm to 900mm	25mm
300mm to 1800mm	32mm



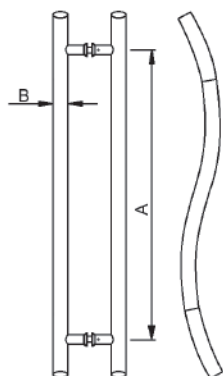
## D-GDH02

D Type Glass Door Handle

Material: SS 304, SS 202

Finish: SSS, PSS, Two Tone

A	B
150mm to 300mm	19mm
200mm to 600mm	22mm
200mm to 600mm	25mm
450mm to 1200mm	32mm



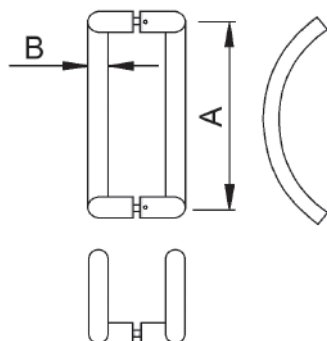
## D-GDH03

S Type Glass Door Handle

Material: SS 304

Finish: SSS, PSS, Two Tone

A	B
200mm	22mm
250mm	22mm
300mm	22mm



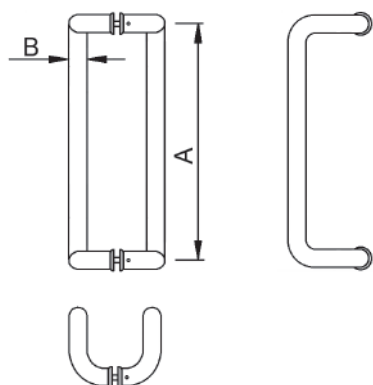
## D-GDH04

C Type Glass Door Handle

Material: SS 304

Finish: SSS, PSS, Two Tone

A	B
200mm	22mm
250mm	22mm
300mm	22mm



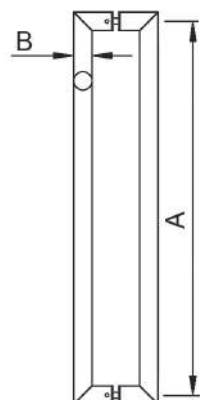
## D-GDH05

Q Type Glass Door Handle

Material: SS 304, SS 202

Finish: SSS, PSS, Two Tone

A	B
200mm	22mm
250mm	22mm
300mm	22mm
450mm	22mm



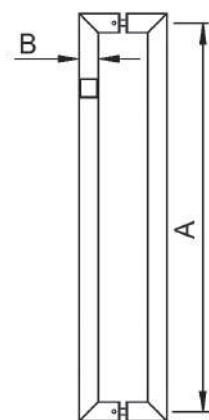
## D-GDH06

L Type Glass Door Handle

Material: SS 304, SS 202

Finish: SSS, PSS, Two Tone

A	B
200mm to 300mm	22mm
300mm to 600mm	25mm



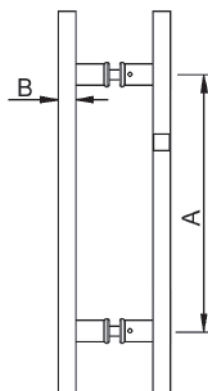
## D-GDH07

SD Type Glass Door Handle

Material: SS 304, SS 202

Finish: SSS, PSS, Two Tone

A	B
200mm to 450mm	20x20mm
250mm to 600mm	25x25mm



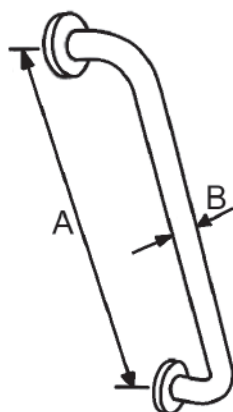
## D-GDH08

SH Type Glass Door Handle

Material: SS 304, SS 202

Finish: SSS, PSS, Two Tone

A	B
200mm	25x25mm
250mm	25x25mm
300mm	25x25mm
350mm	25x25mm
450mm	25x25mm
600mm	25x25mm



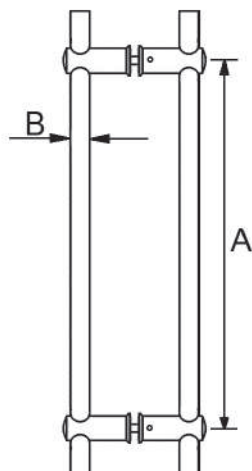
## D-GDH09

Grabrail

Material: SS 304, SS 202

Finish: SSS, PSS, Two Tone

A	B
200mm to 600mm	22mm
300mm to 600mm	25mm



## D-GDH10

Adjustable Glass Door Handle

Material: SS 304, SS 202

Finish: SSS, PSS, Two Tone

A	B
200mm	25mm
250mm	25mm
300mm	25mm
450mm	25mm
600mm	25mm

## D-GDH11

Towel Bar with Handle

Material: SS 304, SS 202

Finish: SSS, PSS, Two Tone

A	B	C
150mm	400mm	19mm
150mm	450mm	19mm
200mm	400mm	19mm
150mm	400mm	22mm
150mm	450mm	22mm
200mm	400mm	22mm
200mm	450mm	22mm

## D-GDH12

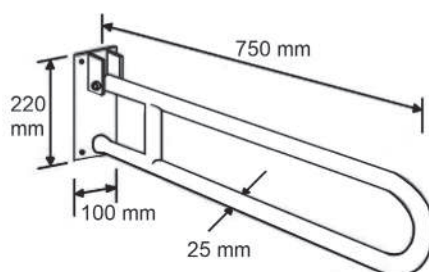
Folding Grab Bar

Material: SS 304

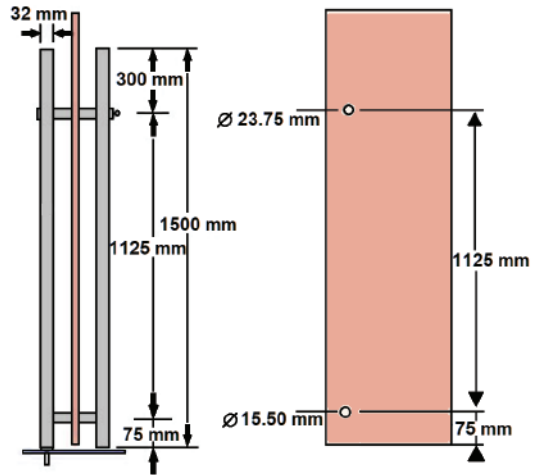
Finish: SSS, PSS, Two Tone

Size: 25mm x 750mm

Folding side swivel grab rails, with reinforced joint smooth hinge action







## D-GDH13

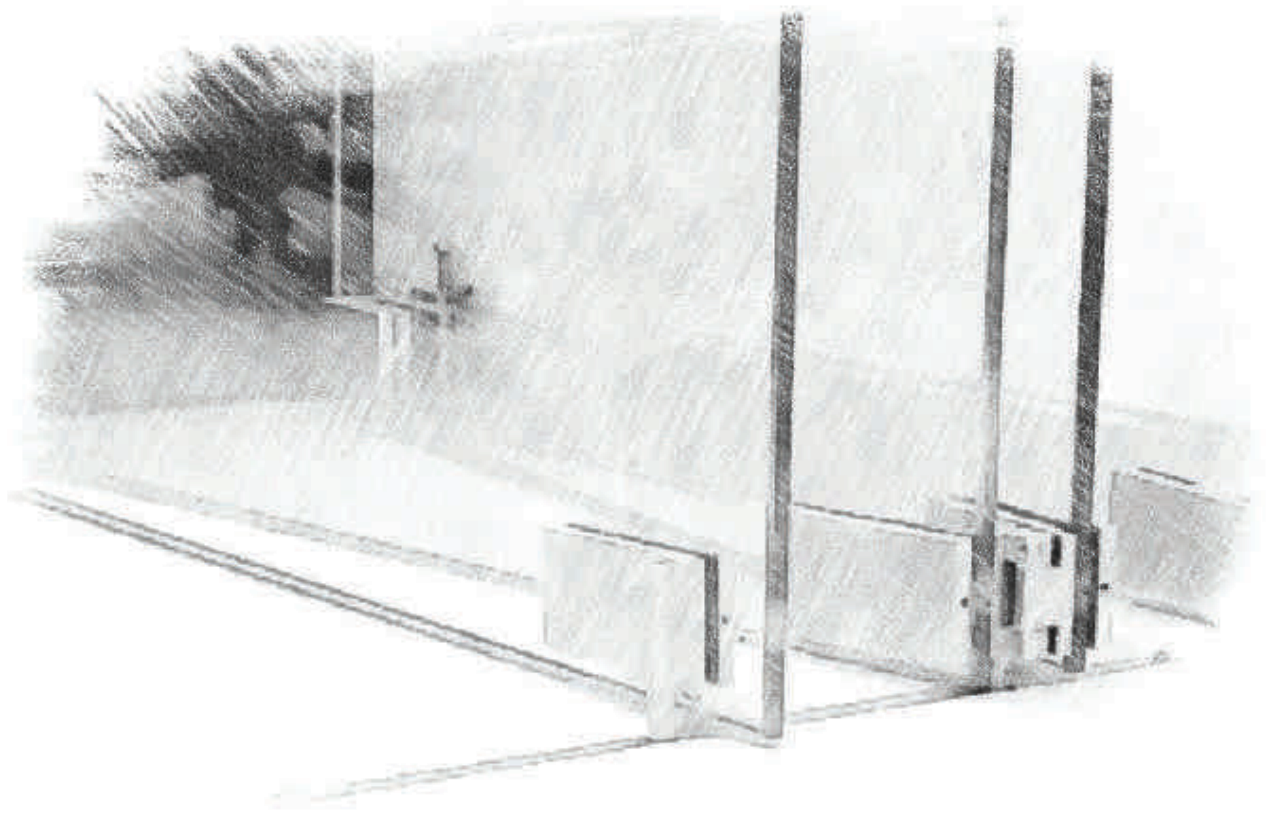
Glass Door Handle With Lock

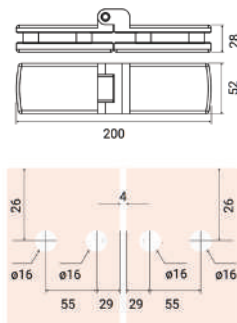
Material: SSS 304

Finish: SSS, PSS, Two Tone

# Sliding Folding Glass Door System

Each panel of the glass folding doors connects to the others and folds as they open—all within a single track. Folding glass walls are energy-efficient and offer wide, unobstructed openings that are not constrained by the fixed glass panels of a traditional slider.



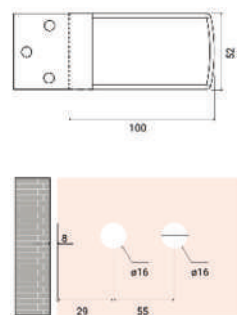


## D-SFS01

Glass to Glass Center Hinge

Material: SS 304

Finish: SSS

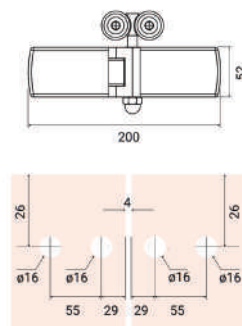


## D-SFS02

Wall to Glass Hinge

Material: SS 304

Finish: SSS

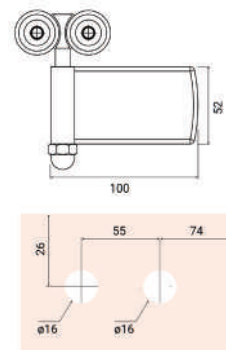


## D-SFS03

End Hinge with Roller

Material: SS

Finish: SSS

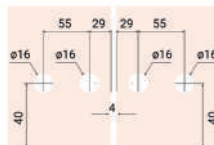
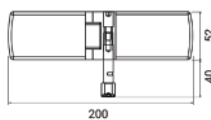


## D-SFS04

Wall to Glass Hinge

Material: SS 304

Finish: SSS

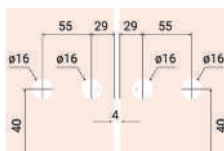
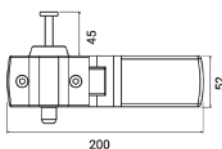


## D-SFS05

Glass to Glass Center Hinge with Guide

Material: SS 304

Finish: SSS

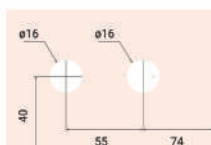
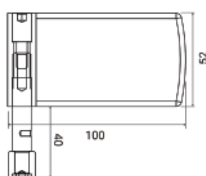


## D-SFS06

Glass to Glass Center Hinge with Lock

Material: SS 304

Finish: SSS

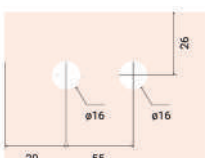
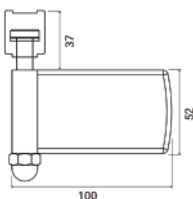


## D-SFS07

End Hinge with Guide

Material: SS 304

Finish: SSS

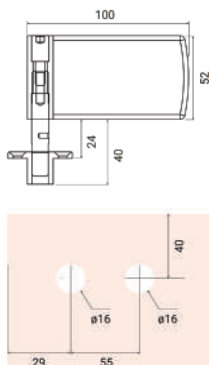


## D-SFS08

Fixed Hinge

Material: SS 304

Finish: SSS

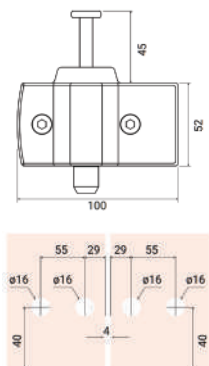


## D-SFS09

Floor Fixed Hinge

Material: SS 304

Finish: SSS

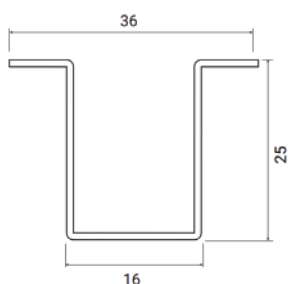


## D-SFS10

End Panel Fitting with Bottom Pivot (L/R)

Material: SS 304

Finish: SSS



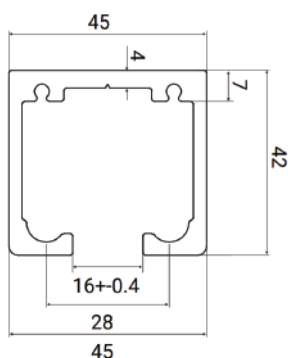
## D-SFS11

Bottom Floor Track

Material: SS 304

Finish: SSS

Length: 12 Feet



## D-SFS12

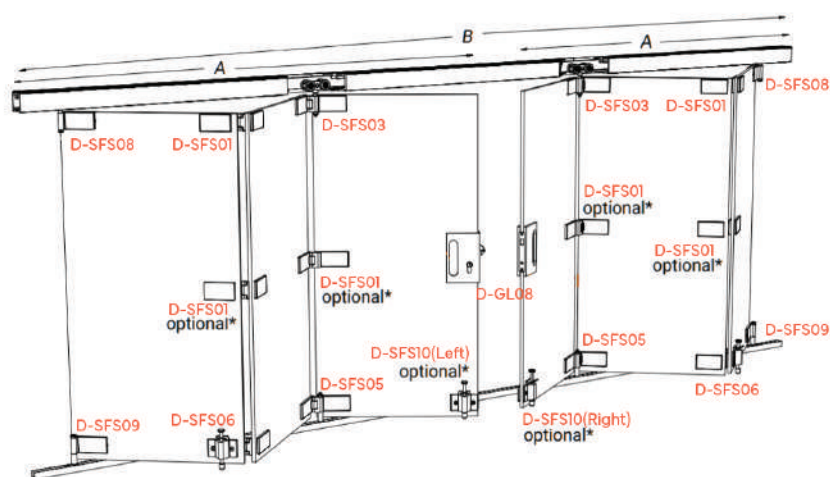
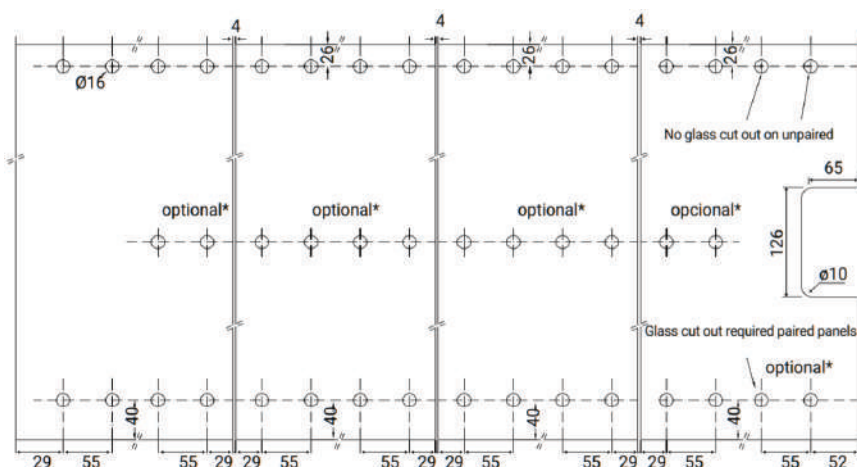
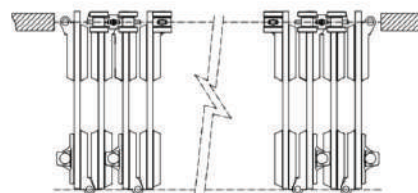
Top Sliding Track

Material: SS 304

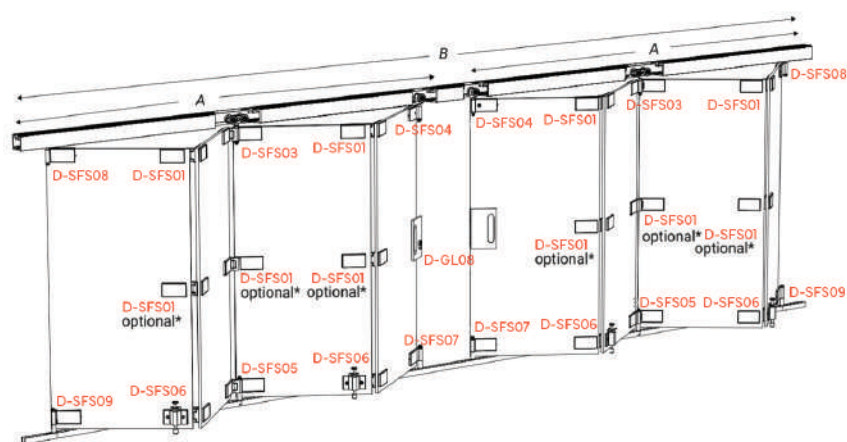
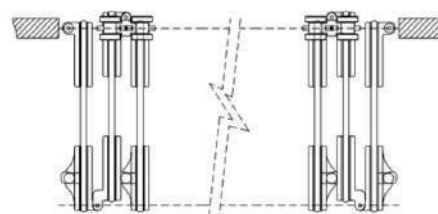
Finish: Aluminium Anodized

Length: 12 Feet, 16 Feet

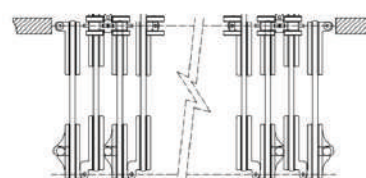
The system is recommended for openings of 2.50 mts height and 8 mts wide, with a maximum of 10 panels up to 80cm width.



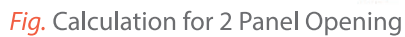
Reference Needed for installation of 3 Panels		
Code	3 Panels (A)	3+3 Panels (A)
D-SFS01	1/3 * Nos.	2/6* Nos.
D-SFS03	1 Nos.	2 Nos.
D-SFS05	1 Nos.	2 Nos.
D-SFS06	1 Nos.	2 Nos.
D-SFS08	1 Nos.	2 Nos.
D-SFS09	1 Nos.	2 Nos.
D-SFS10	1* Nos.	2* Nos.
D-GL07	1 Nos.	-
D-GL08	-	1 Nos.



Reference Needed for installation of 4 Panels		
Code	4 Panels (A)	4+4 Panels (A)
D-SFS01	2/5 * Nos.	4/10* Nos.
D-SFS03	1 Nos.	2 Nos.
D-SFS04	1 Nos.	2 Nos.
D-SFS05	1 Nos.	2 Nos.
D-SFS06	2 Nos.	4 Nos.
D-SFS07	1 Nos.	2 Nos.
D-SFS08	1 Nos.	2 Nos.
D-SFS09	1 Nos.	2 Nos.
D-GL07	1 Nos.	-
D-GL08	-	1 Nos.







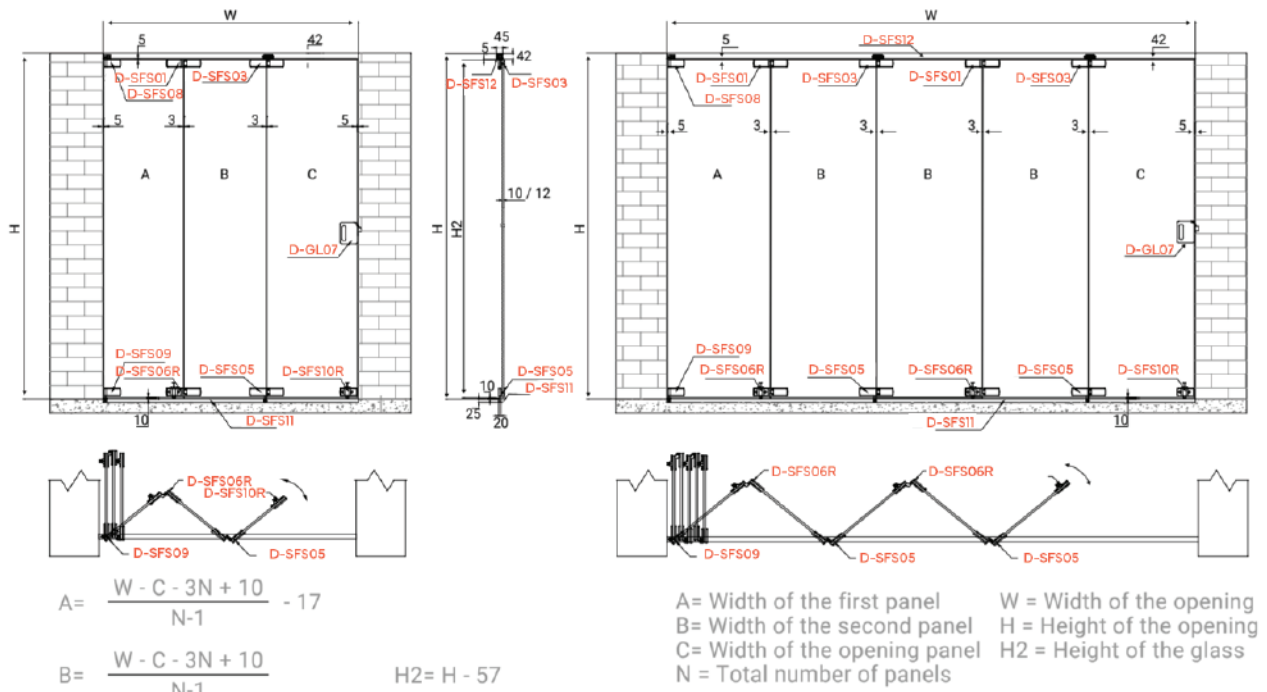


Fig. Calculation for Uneven No. of Panel Openings

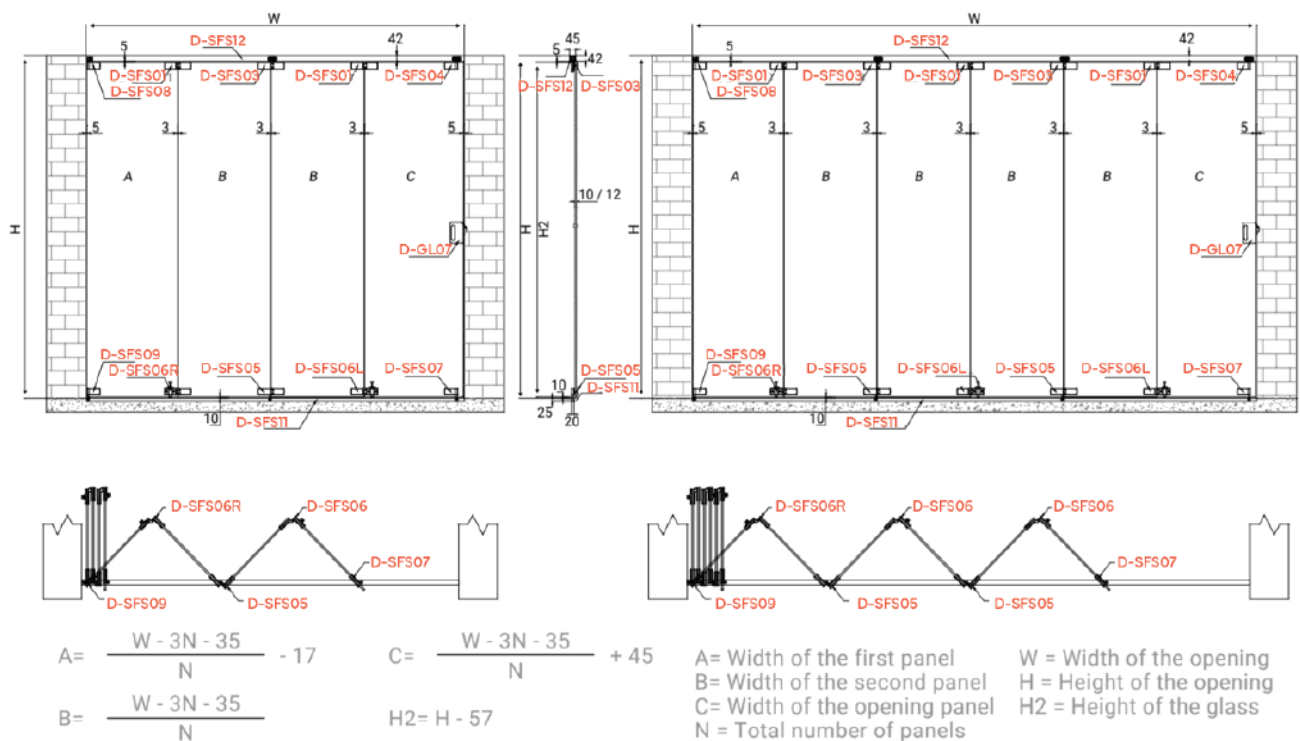
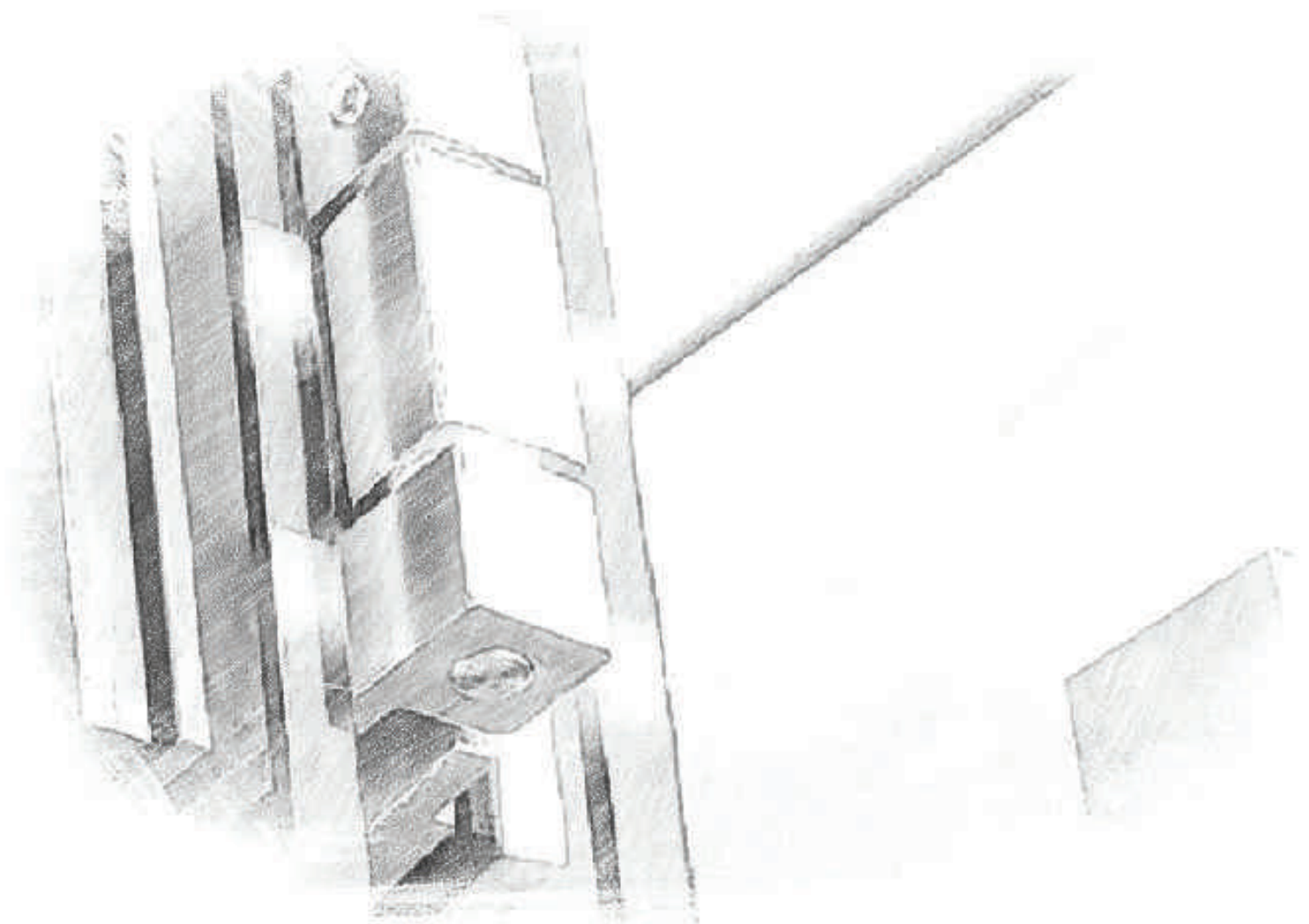
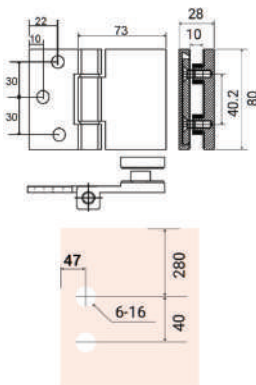


Fig. Calculation for Even Panel Openings

# Center Sliding Folding Glass Door System

Glass folding system is designed for both interior and exterior applications. Nylon wheels with integrated bearings for quite easy running. Integrated bolt lock for security with trouble free operation.



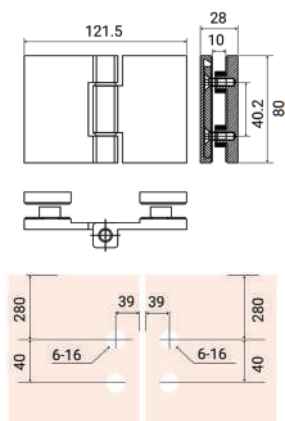
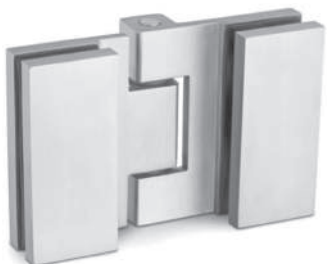


## D-CSFS01

Wall to Glass Hinge

Material: SS 304

Finish: SSS

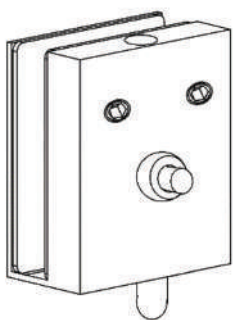


## D-CSFS02

Glass to Glass Hinge

Material: SS 304

Finish: SSS

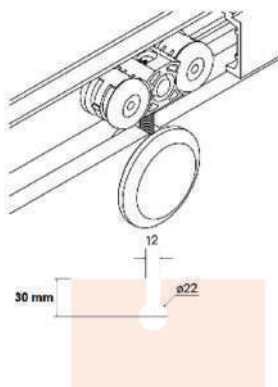


## D-CSFS03

Push Bottom Lock

Material: SS 304

Finish: SSS

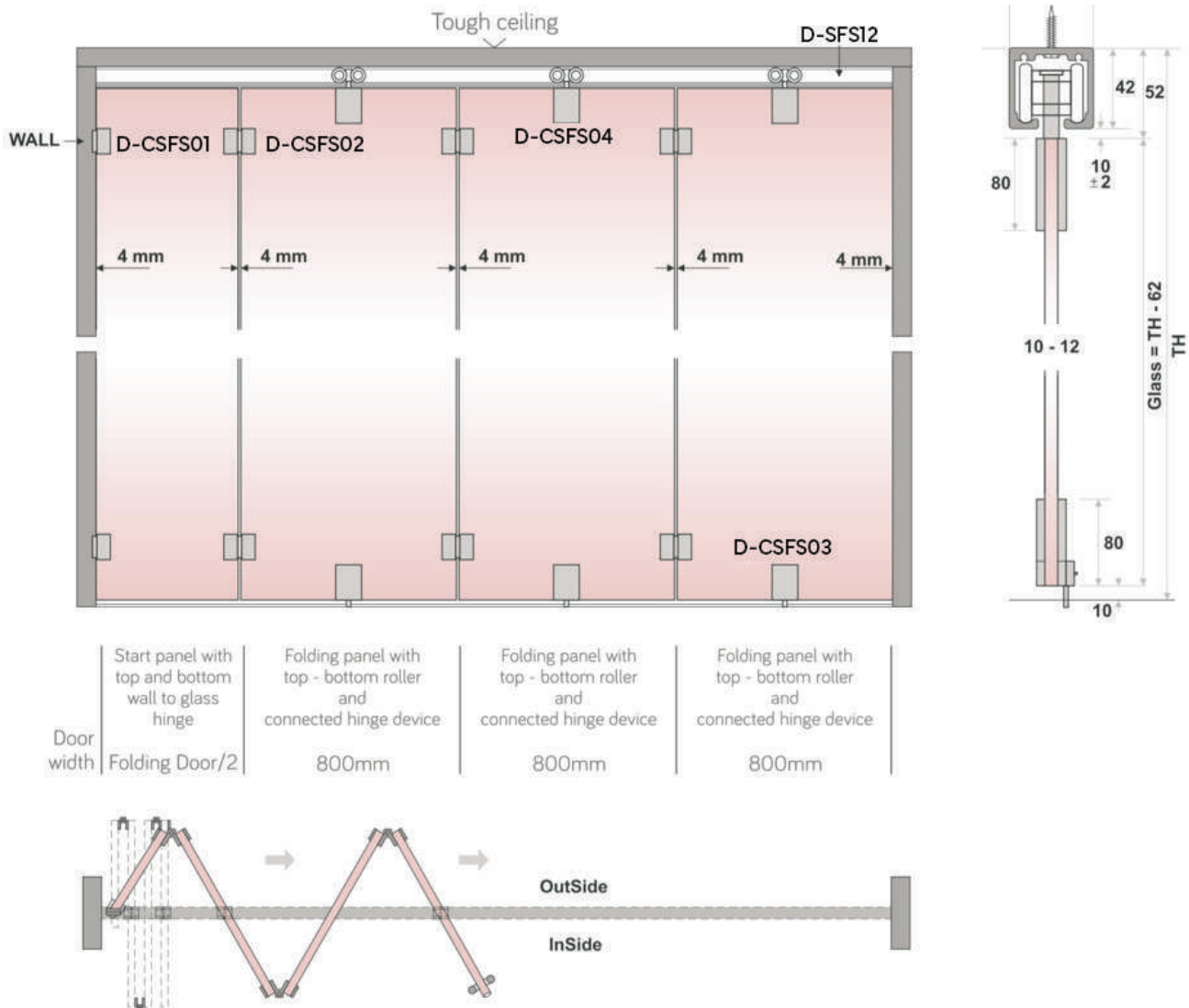


## D-CSFS04

Sliding Roller

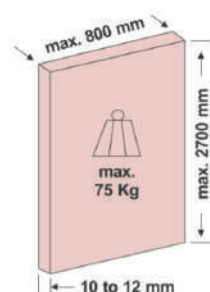
Material: SS 304

Finish: SSS



#### Calculation of Glass Weight:

Thickness of Glass	Approx. Weight per Sq. Ft.
6mm	1.400 Kg
8mm	1.900 Kg
10mm	2.400 Kg
12mm	2.900 Kg



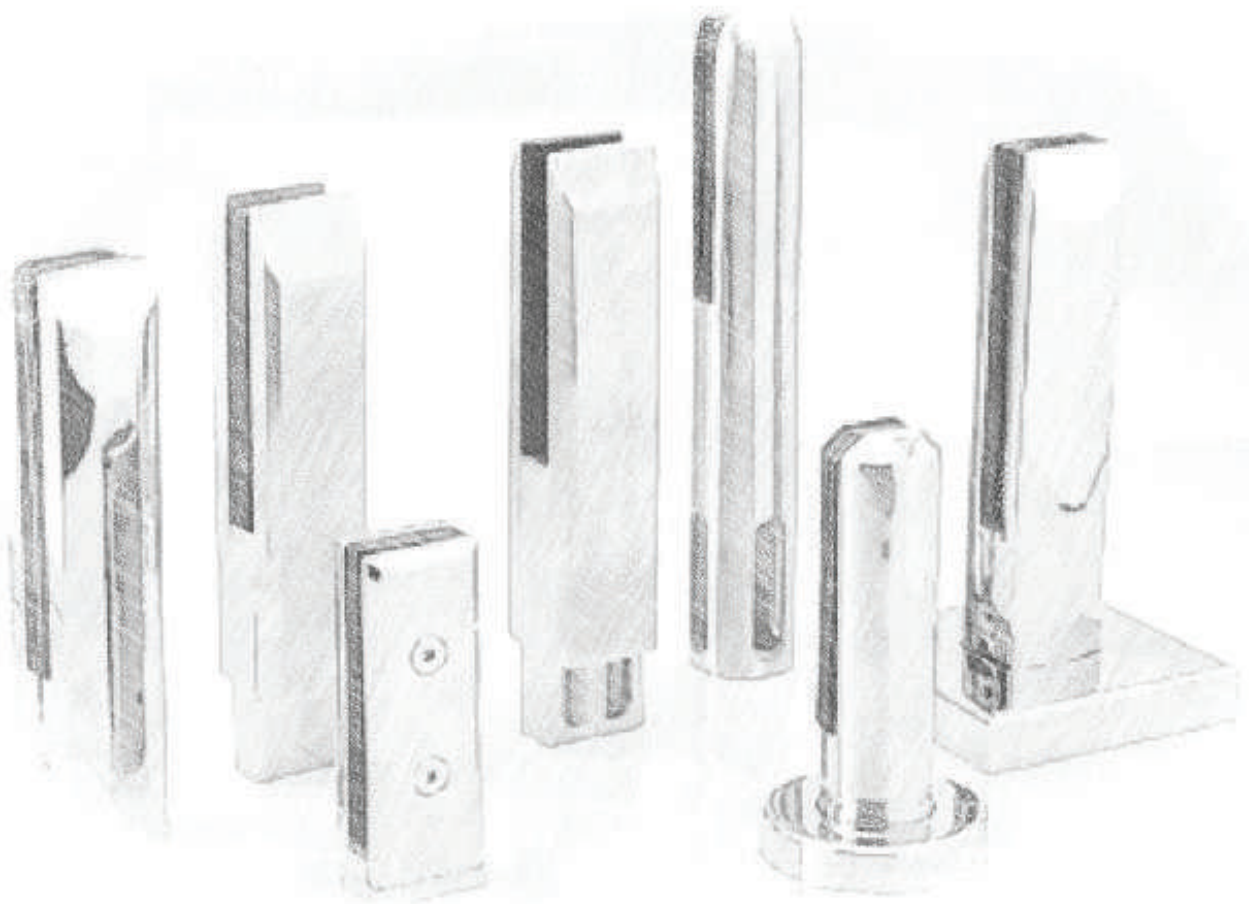
#### Features:

- Advanced glass center folding mechanism for up to 6 frame less glass panels with professional design concept.
- Center folding system is designed for both interior and exterior applications.
- Panels are connected using a hinges system.
- Nylon wheels integrated bearing for quite easy running.
- **Maximum Weight of Door: 75Kgs/Panel**
- **Minimum Panel Width: 500mm**



# Hand Rail Glass Fitting Accessories

Focusing on the Excellency of the fittings products, we are engaged in presenting Hand Rail Glass Fitting Accessories. These railing accessories are processed with precision with the use of the finest material. Additionally, the railing accessories provided by us are present in various options.





### Frameless Top Mount Series



D-HRF01



D-HRF02



D-HRF03



D-HRF04



D-HRF05



D-HRF06

### Frameless Top Mount Series



D-HRF07



D-HRF08



D-HRF09



D-HRF10



D-HRF11

### Frameless Top Mount Wooden Series



D-HRF12



D-HRF13



D-HRF14



D-HRF15



D-HRF16

### Balustrade with Midrail Fittings



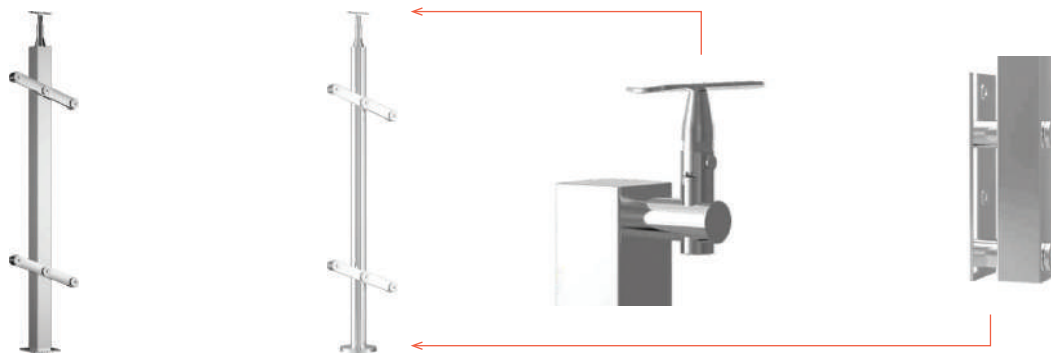
D-HRF17

### Square Balustrade with Square Connectors



D-HRF18

### Baluster with Glass Fittings



D-HRF19

D-HRF20

### Coated Balustrade with Midrail Fittings



D-HRF21

### Coated Balustrade with Glass Fittings



D-HRF22

D-HRF23

D-HRF24

### Balustrade with Midrail Fittings



D-HRF25

D-HRF26

### Wooden Balustrade with Midrail Fittings



D-HRF27



D-HRF28



### Solid Balustrade with Midrail Fittings



D-HRF29



### Solid Balustrade with Glass Fittings



D-HRF29



### Wooden Balustrade with Midrail Fittings



### Wooden Balustrade with Midrail Fittings



### Marble Balustrade with Midrail Fittings



## Glass Mounting System



D-HRF42



D-HRF43

## Top Bracket Series



D-HRF44



D-HRF45



D-HRF46



D-HRF47



D-HRF48

## Top Bracket Series



D-HRF49



D-HRF50



D-HRF51



D-HRF52



### Balustrade Parts



D-HRF53



D-HRF54



D-HRF55



D-HRF56

### Balustrade Parts



D-HRF57



D-HRF58



D-HRF59



D-HRF60

### Balustrade Parts



D-HRF61



D-HRF62



D-HRF63



D-HRF64

### Balustrade Parts



D-HRF65



D-HRF66



D-HRF67



D-HRF68

### Balustrade Parts



D-HRF69



D-HRF70



D-HRF71



D-HRF72

### Balustrade Parts



D-HRF73



D-HRF74



D-HRF75



D-HRF76

We offer a wide selection of custom finishes that can be applied throughout our entire collection of architectural fixtures. This service enables us to customise and combine finishes and products in a variety of ways to suit your needs.

*With over 12 finishes including brushed, polished, rumbled and powder-coated textures; the possibility to create unique and tailored solutions are abundant.*



Stain Stainless Steel



Polished Stainless Steel



Brushed Antique Brass



Brushed Black PVD



Polished Black PVD



Brushed Gold PVD



Polished Gold PVD



Brushed Rose Gold PVD



Polished Rose Gold PVD



Chrome Plated



White Powder Coated



Black Powder Coated

## Proper Care of Stainless Steel

When installing, avoid contamination by working with clean hands and away from places where iron is cut with saws.

Once installed, the product must be cleaned and degreased with special commercial products or washed with clean water. Do not use steel wool, scotch bight, or any abrasive materials or cleaners (solvents or bleach).

Scratches and rough edges must be mechanically removed to prevent the inclusion of contaminants. Avoid damage caused by tools in the installation process, use only stainless steel tools.

In installations near the ocean, products must be cleaned well at the end of the installation and at least twice a month. If cleaning is not possible due to the location of the accessories, a transparent polyurethane varnish or transurethane finish must be applied before installation.



## Type of Orders

### Regular Orders

Quotation done by telephone or email.

### Special Orders

To order special products not included in inventory requires a 50% deposit in advance. Please inquire.

### Special Volume Orders

A special discount may be offered with this kind of order. Please inquire.

### Sale Prices

Subject to change without previous notice.

## Other Charges

### Internal Cartage

This is the cost to truck the goods from the warehouse to the port, shipping company, or airline. The cost depends on the volume-weight relation of the load.

### Freight

This is the cost charged by the air or maritime shipping company, to transport the goods to destination.

### Insurance (Optional)

Amount charged by the Insurance Company. The customer must specify to the Sales Team to include this service before the goods are shipped. WE DO NOT INSURE UNLESS INSTRUCTED TO DO SO.

## Code Identification

The Finish of the products have the following codes:

SSS	Stain Stainless Steel
PSS	Polished Stainless Steel
CP	Chrome Plated

## Important Note

Given cutout drawings are just for reference, will be changed according to the actual scene.

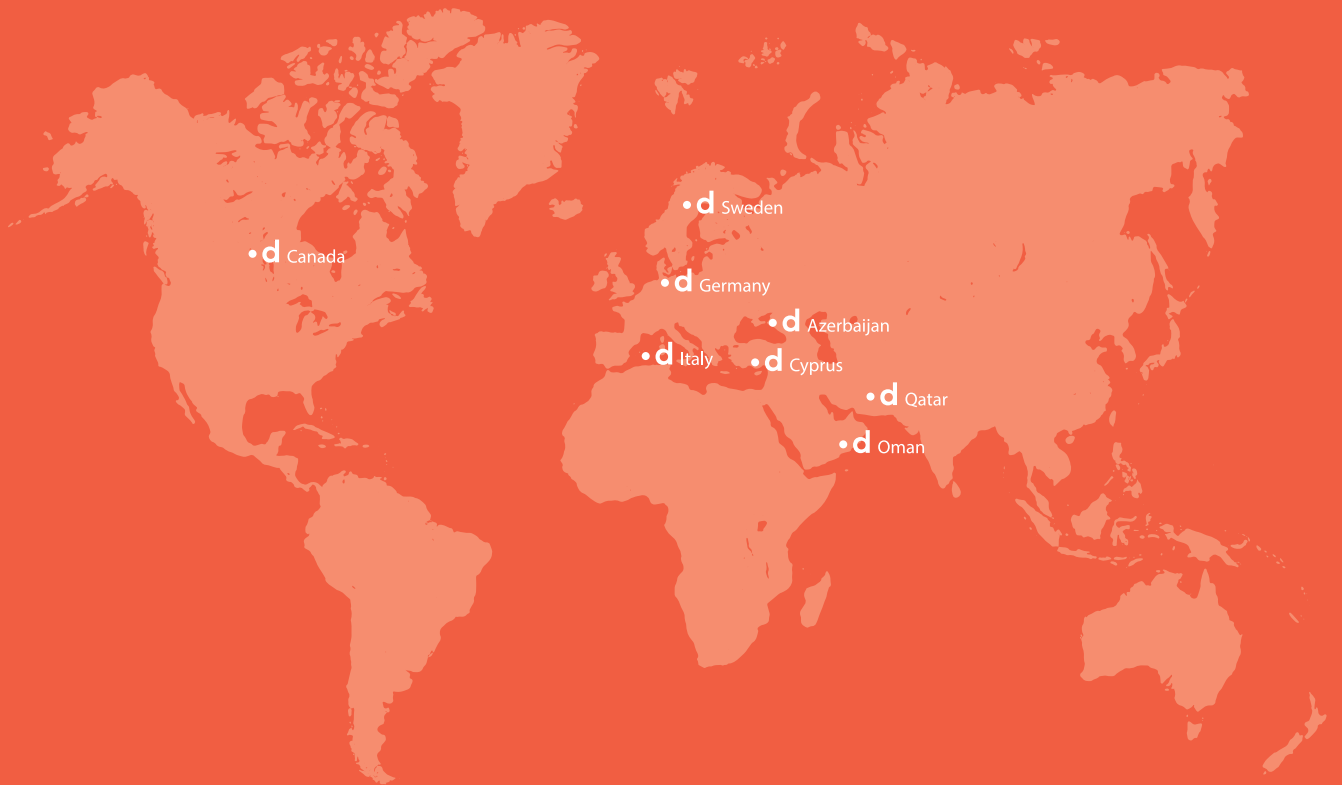
## Product Warranty

Our products are guaranteed by physical replacement for items with factory defects. If a defect is found during the warranty period (inquire), an S & B ENTERPRISE representative must be notified immediately to do an inspection. If the order received by the customer is missing a box, S & B ENTERPRISE must be notified within 14 calendar days (after clearing customs).

This report must be an official report from Customs and made by an inspector during the clearing customs process and not afterwards. This "Report of findings" Is the only formal process accepted by the insurance company.

## World - The Marketplace

It took a mere 24 months since inception for Dorzen to flap its wings and create a flutter in the global market. This journey began in United Arab Emirates and today, over 8 countries have benefitted using the Dorzen Products that making India proud.



WE ARE A COMPANY  
WITH A SINGULAR,  
YET GLOBAL VISION





**dorzen.in**

**S&B Enterprise**

Vavdi Survey No. 39, Plot No. 2, Opp. Falcon Pump,  
Nr. Gondal Chowk, Vavdi, Rajkot - 360 004, Gujarat (INDIA).

**+91 83202 54252 | +91 97379 15701 | [info@dorzen.in](mailto:info@dorzen.in)**